

# Rowlands Castle Association

Spring 2014

## Village Magazine

[www.rowlandscastle.com](http://www.rowlandscastle.com)



# Chantry House Oak

Oak Furniture Manufacturers & Retailers



Our Workshop Showroom is open to the Public Mon - Sat 9 - 5pm

[www.chantryhouseoak.co.uk](http://www.chantryhouseoak.co.uk)



Oakham Farm, Church Lane, Oving, W Sussex, PO20 2BT  
01243 776811





## Village Magazine Spring 2014

RCA Chair's Report .....	4-5
New RCA Vice-President .....	6
Localism .....	7-8
Village Fair .....	9
Emsworth Arts Fair.....	10
RCA Children's Christmas Party .....	11
U3A News.....	12
Shipwrights Way .....	13
Photography Club .....	14-15
Flooding .....	16-18
Gardening Club. ....	19
Dreams Come True .....	20
Craft Fair .....	21
1st Rowlands Castle Scouts .....	22-23
Obituary—Fred Beer. ....	24-25
St John's School. ....	26-27
Women's Institute .....	28-29
Painting Society .....	30
Bridge Club. ....	31
Rowlands Castle Tennis Club .....	32-33
Good Neighbours .....	34
Jewellery Fair.....	35
Wildlife .....	36
Obituary—Alma and Roy Dunston .....	37
St John's Church. ....	38-39
Safer Neighbourhoods .....	40
Parish Hall News .....	41-42
Potholes .....	43
Local Council News .....	44-47

The Village Magazine is published three times a year by the RCA. The aims of the RCA are to act as a channel of communication for the Village, to conserve the character and to enhance the life of the Village.

**Editor: Kevin Connell , 19 Mallard Road, Rowlands Castle, PO9 6HN**  
**Tel: 02392 413857      email: [editor@rowlandscastle.com](mailto:editor@rowlandscastle.com)**

*Cover picture: Sue Connell*

# Rowlands Castle Association

## Message from the chairman of the RCA

by Richard Milton, Chair, RCA

First, my congratulations and best wishes to the RCA Committee's new Chair, Kevin Connell, and to his colleagues on their election at the AGM.

The aims of the RCA are: to conserve the character of Rowlands Castle, to provide a channel of communication on matters of local interest and to enhance the life of the village.

During the past year we were pleased to play a part in supporting the Parish Council in opposing the planning application of Keydell to build in the Village by donating £1,000 to the fighting fund.

The Magazine you're reading is also edited by Kevin Connell and my thanks to him and to Prue Amner for managing the advertisements. Thanks to the army of volunteer deliverers, who distribute each issue.

Our webmaster, Gillian Lovegrove, does a first rate job of managing the Rowlandscastle.com website and the Grapevine email list, run on behalf of the Village by the RCA, and which currently has 391 subscribers - about one-third of the homes in the Village.

Running the Bonfire night celebrations is quite a logistical feat, and I would like to thank all who make it possible, including Selstar for the fireworks, Bill Burnett for the fairground attractions and the Scouts and Guides for refreshments, St John Ambulance and the Police for keeping us safe. Mike Coombe and his colleagues from the Havant Rotary Club volunteered to act as marshals this year. Thanks too to everyone who helps to build the bonfire under the direction of our bonfire-meister Alan Eysers.

Many thanks to Nicci Lucas and Anita King for organising the children's Christmas party at St John's church hall and to Kath Molloy for stepping into the breach as Santa Claus this year.

For the last few years we have had an RCA quiz night – thanks to Kevin and Sue Connell who have inspired and organised this event and turned it into a regular part of the RCA calendar. This year as a result of the money raised we were able to make donations both to St John's School and Rolli's nursery group.



# Rowlands Castle Association

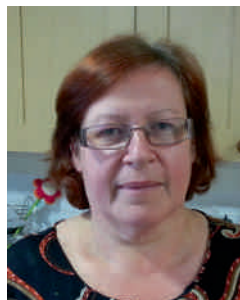
## Your RCA Committee



Kevin Connell (Chair)  
9241 3857  
[chair@rowlandscastle.com](mailto:chair@rowlandscastle.com)



Fiona Charlesworth (Secretary)  
9241 3865  
[secretary@rowlandscastle.com](mailto:secretary@rowlandscastle.com)



Sharon Broom (Treasurer)  
9241 3592



Sue Morrison  
9241 3292



Martha Dombey  
9241 0030



Jane Collins  
9241 2530



Gillian Lovegrove (Webmaster)  
9241 2426  
[webmaster@rowlandscastle.com](mailto:webmaster@rowlandscastle.com)



Vacancy



Vacancy

### **Alan Evers becomes vice-president of the RCA** **by Alan Drinkwater**

**T**he Rowlands Castle Association held its AGM on 24th February, and confirmed the appointment of Alan Evers as its first Vice President. The RCA constitution was amended at the previous AGM in 2013 to allow for such an appointment. I am delighted that Alan has accepted the invitation. We will look forward to the advice, support and encouragement that he will be able to offer the RCA Committee and its chairperson in managing RCA business in the Village.

Alan is, of course, no stranger to voluntary working within organisations in the Village. Having lived in Rowlands Castle for twenty one years, he was a member of the Village Fair Committee for eleven, chairing it for three of those years. He subsequently was a member of the RCA Committee for three years, again chairing it for two of those years. More recently his business activities have limited his availability to participate. Never the less, he has played an important role for twelve years in assisting with the bonfire on Fireworks Night, and featured in an anonymous role at the RCA Children's Christmas Party!

Alan's business career also offers practical experience of management which may assist the Committee in the conduct of RCA business. Originally apprenticed in the hotel industry, he progressed as a manager in both hotels and the catering industry. Based on the awareness of flame retardants as a safety feature in industry, he subsequently started his own business. This has now been merged into a company called Euroflam based in Horndean. The company offers flame retardant treatments to UK furniture retailers and international hotel groups. Alan is now Operations Director at Euroflam.

Reflecting on my role as President for the past fourteen years, I am glad that the RCA now has Alan as Vice President. Originally, I believe that I was offered the role of president by then chairman Chris Cochrane because of my experience over twelve years as County Councillor for three local parishes. In particular, this had given me a wider perspective on how local government works. When such a role was first proposed, one of its possibilities was to provide a 'safety net' for the RCA should its circumstances require it. My experience, however, has been much more positive. My main contact has been through occasional informal conversations with the RCA Chairperson and Committee members. I have been impressed by the efforts of successive chairpersons in reforming and chairing the Committee, bearing in mind that the RCA constitution only allows volunteers to serve for three years, with the option of an extension for one further year.

Alan Evers will bring his wider experience of village organisations. He takes satisfaction in the way that the RCA has built up its role in village life, including through this Magazine, the 'Grapevine', the annual Fireworks Night, the Children's Christmas Party, Quiz Nights, and donations to support other local activities. The Committee has also supported recent festivities to celebrate the Queen's reign, and participated in the initial successful steps towards U3A in the village. Alan's new appointment is to be welcomed.

## Localism, the big plonking truth

by Michael Daysh

Exactly 100 years ago, the government asked people to go and fight for our green and pleasant land. They understood that our countryside and villages are at the heart of being British. What a shame that it seems we have to plead with our own government not to ruin what people gave their lives to protect.

Our village and countryside are under threat of yet more urbanisation from the Government planning policy ironically named “Localism.” The Daily Telegraph describes the policy as “the greatest threat to the countryside since the Second World War.”

Although subject to confirmation, the general expectation is that our village will, over the plan period of 2011 to 2028, have had a minimum of 242 new houses, including Castle View.

That’s an increase of about 20% in number of houses - far in excess of projected population growth. To put this in context, if the houses are built at the same density as Castle View, we will lose an area of land equivalent to about 16 times the Village Green. That is a lot of houses in our village. Far too many to be contained in the village boundaries as we know them.

I had thought that the government’s Localism policy left us safe from this scale of development unless we wanted it. For example, David Cameron (who said he would lead “the greenest government ever”) said the following on TV:

“Our reforms will make it easier for communities to say ‘we are not going to have big plonking housing estate[s] landing next to the village, but we would like 10, 20, 30 extra houses and we would like them built in this way, to be built for local people.’” Talking of the countryside in his own Oxfordshire constituency, he went on to say “I would no more put that at risk than I would put at risk my own family.”

Sadly, Mr Cameron’s comforting words do not even remotely reflect the



# Localism

reported reality of the “Localism” experiences of villages, towns and cities across the country. Note, for example, the views of Nigel Evans, Tory MP for Ribble Valley, at Prime Minister's Questions on 5th March, 2014:

”The village of Barrow in the Ribble Valley has fewer than 300 houses. The local authority has given permission for just over 100 new houses there, but the planning inspector has overturned a refusal of the local authority and will impose 504 more houses on that village against the wishes of the local MP, the local authority and the local people. Will my right hon. Friend look again at the workings of the Planning Inspectorate to ensure that from now on the planning inspector puts the wishes of local people at the heart of the Localism Act 2011 as he intended?”

Locally, the West Sussex Gazette and the Chichester Observer reported on separate plans for 3,660 village homes, and 6,973 homes in and around Chichester. Protesters have complained of a “sham.” The complaint in report after report from around the country is that Localism makes no difference – the houses will be built anyway.

And there may be more to come. With a “presumption in favour of sustainable development” when looking at planning applications, I wonder what will happen next. This may not be the end of it, and I think we need to be vigilant.

Now here is the good stuff. In the Summer 2013 Village Magazine, Marge Harvey said, “From a local view you can be assured that I will be fighting on your behalf to restrict the number of houses that Rowlands Castle is allocated.”

And in the Autumn 2013 Magazine, Marge Harvey said this: “We already have a few sites that have been put forward, but for one reason or another most of them are not suitable in my eyes, so that will be something that the Parish and I will have to fight.”

What great news. I look forward to Marge’s many successes, fighting for us. I hope she will develop her own, meaningful Localism by inspiring the community to get involved, by showing us how we really can make a difference, and by helping us to protect our green and pleasant land from Whitehall autocracy.

But most of all, I hope she stops all of the Plonking by all of the Plonkers.

## Apology

We carried an article on local pubs in the last issue and unfortunately failed to mention ‘The George’ in Finchdean. Paul Cartwright, the licensee, asked me to mention that ‘The George’ has a VIP membership currently totalling more than 500 members all of whom receive discounts and special offers. It also has its own website where vouchers for discounted meals/wines can be obtained and also a facebook page. It adds to the rich diversity of public houses that serve the area. I am pleased to rectify the omission.



## Rowlands Castle Village Fair July 5th 2014

by John Higham

As you know, all the Fair committee are entirely voluntary and put it all together during the year and setting up in the week before. It takes time, but the social aspect of being involved and the eventual day is what makes it all worthwhile. All profits are then ploughed back into village projects and to pay for next year's event. If you would like to join the committee please come and see us. It really is a great way to get involved and put something into the community. Whatever your skills, please get in touch. You can send a message to [RCVF@rowlandscastle.com](mailto:RCVF@rowlandscastle.com).

We have lost a few key members through retirement this year and are hoping that some folk will step forward to replace them. It will then continue the success of the Fair. A big thank you must be said for those that are leaving for all their efforts in the past. Jobs we are looking to replace are advertising for the Programme and sponsorship, someone to look at band hire and anyone with a bit of time who can bring general organisational efforts to the table.

The profits of previous Fairs have gone into many local groups and causes and this year a set of fabulous outdoor gym apparatus and Table Tennis table were installed in the Rec. You may have seen us in the Portsmouth News. If not, there is an accompanying photo showing many of those involved in the fund-raising, implementation and users of the equipment. Many villagers have been seen using the Gym and the feedback has been really positive, so go down and have a go.

Currently, we have Professor Crump looking to return. He was a great success last year, so we thought we would invite him again. The booking has been agreed, so we are just tying up the details. The band are being booked and we are looking to get a Beach Boys tribute act as everyone likes their music and they are great to dance to. Anyone attending in the evening may want to think about their outfit in view of this. Steve Kingsley will be complimenting the band with his famous DJ spot. We are hoping to get the ticket sales out a bit earlier this year, so please lookout for them in Village stores and pubs. The committee and others will also have some for sale.

The Theme this year being 2014 will be the World Cup in Brazil, so ideas for this can be National football teams, Mardi-Gras outfits and similar. So if you are entering children into the fancy dress, there are some ideas for you. The cover competition for the Fair programme will also be judged on these themes, so Children, get your thinking caps on and your paints and pencils out! If the Children's' Football club would like to do a spot in the arena of skills and a demo, please get in touch.

There is a lot going on behind the scenes and we really do need so new volunteers, so come on mums and dads, please get in touch. See you all on the first Saturday in July!



# Emsworth Arts Trail

## Rowlands Castle and Finchdean Artists join the Emsworth Arts Trail

by Sylvia Tomkinson

**A**rts Trails are very popular Spring/Summer time events, where Artists and Craftsmen in a local area open up their studios/workshops for the public to see their work and sometimes see them actually working. A trail guide is produced which gives details of each participant, shows an image of their work and instructions about where to find them. Here we do not have enough Artists to warrant an Arts Trail all of our own, so four of our local arts and crafts enthusiasts have booked the Emsworth Centre, a venue down by the quay, to participate in the annual Emsworth Arts Trail which covers two weekends 26th, 27th April and 3rd, 4th, 5th May 2014.



Jean Bradley who lives in Finchdean, is a glass artist, making fused glass sculptural pieces and glass beads. She also paints in watercolour and mixed media and produces wood-block prints. Her work is inspired by colour and texture in the natural world.

Jonquil Tonge from Rowlands Castle, makes jewellery from silver and semi-precious beads. Her designs include curves and spheres and incorporate moving parts so they are extremely tactile. Her jewellery is hall marked. She also teaches jewellery making in her own workshop.



Deborah Richards from Finchdean does mixed-media drawings, pastel and charcoal sketches made in response to the changing light, colour, rhythm and mood. These individual works on paper feature the Solent coast and local downland.

Sylvia Tomkinson again from Rowlands Castle, designs and hand makes her jewellery using Silver, Gold and semi-precious stones to create several distinctive collections within her jewellery range. In particular she uses the contrasts of colour or texture to create her unique designs.



Over one hundred artists at fifty two venues can be visited in Emsworth over the two weekends by walking around the town. Where else could you find fifty two art venues within walking distance? The Trail offers the chance to see and purchase stunning original works, cards, and reproductions and meet the designers, painters and makers in their own homes and studios. The Trail Guide leads you on a fascinating tour of paintings, ceramics, photography, jewellery, textiles, furniture and more – all vying for your attention.

Trail Guides will be available from local shops, libraries, trail venues and via the website at [www.emsworthartstrail.org.uk](http://www.emsworthartstrail.org.uk) where you can also visit the 2013 virtual gallery.

# RCA Children's Christmas Party

## A magical time for all by Sue Connell

The RCA annual Children's Christmas Party took place last year on Sunday 22nd December in St John's Church Hall. Children of the village aged up to six years had a wonderful time, and all for the bargain price of just one pound. Mike Fairall, popularly known as Magic Mikey, entertained the children as soon as they arrived with a wonderful combination of games, balloon modelling, magic tricks and spot prizes. The children were both captivated and enchanted, and the adults had great fun, too!



After the magic show, the children eagerly went through to the adjoining hall for their festive tea party, the tables having already been laid out with goodies.

Once the children had had their fill, it was back to the other hall for a fun disco with lighting effects, games and competitions, all supervised by Magic Mikey. This was followed by the eagerly anticipated arrival of Santa and his elf. Each child went up to receive a present from Santa's sack, there were some presentations, and finally the party came to an end.

Thanks must go to Mike Fairall for such brilliant entertainment, and also to Kath Molloy who made a great Santa!

Special thanks go to Nicci Lucas and Anita King who organised this year's Children's Christmas Party, along with help from the RCA committee members. The overall organisation will now pass to Anita King. Many thanks to Anita for taking this on, and grateful thanks to Nicci for all her hard work with the previous parties.

This annual event is open to all young children of the village, and is a fun and magical Christmas outing for them. Publicity and contact numbers for the 2014 party will be available nearer the time, so make sure you don't miss out!

## U3A up and running

by Kevin Connell Rowlands Castle U3A Chairman

The Rowlands Castle U3A has at the time of writing 131 members. This excellent response has meant that we have been able to create a good selection of special interest groups. We are also looking forward to our first outing on July 21st to Blenheim Palace. Check out the Rowlands Castle U3A on the Rowlands Castle website [www.rowlandscastle.com](http://www.rowlandscastle.com) There is a link to the U3A pages on the front page.

Currently there are 28 active groups. These meet as follows:

### *Monday*

Bird watching; digital photography; developing French; Spanish beginners; developing Spanish; holiday forum, reading; theatre; bridge for beginners; outings.

### *Tuesday*

Cryptic crosswords; family history; play reading; meditation.

### *Wednesday*

Science and technology; pilates/yoga.

### *Thursday*

History; cycling; Italian; computing and IT.

### *Friday*

Walking, traditional jazz..

### *Others*

Astronomy (subject to viewing conditions)

Machine Pilates (individual times)

Pre history, German, Quizzing and modern art (time to be confirmed)

Singing (under review, need a lead contact and a musical arranger)

If you are interested in the U3A membership is £20 which includes insurance cover whilst you are involved in U3A events. Come along to the monthly meeting, 3rd Monday of the month except April (2nd Monday), July and August (no meeting) or contact [u3asecretary@rowlandscastle.com](mailto:u3asecretary@rowlandscastle.com)





## First 12 sculptures installed on Shipwrights Way

by Richard Wells Communications Officer EHDC

**W**alkers, cyclists and other users of the Shipwrights Way can now visit the first 12 sculptures on the route. You will now find sculptures on the Hayling Billy trail, in Rowlands Castle, at the Buriton chalk pits, Queen Elizabeth Country Park, Petersfield, Steep, Broxhead Common, Liss Railway Walk and Bordon Inclosure.

The sculptures, created by Richard Perry after consultation with local community groups, tell the story of the landscape, representing the important geographic, historical and natural features of the area.

In total there will be 20 sculptures along the Shipwrights Way from Alice Holt Forest in the north to the Historic Dockyard in Portsmouth to the south, with the remaining 8 due to be installed towards the end of March (weather and ground conditions permitting).

They have been funded by East Hampshire District Council through developers' contributions, South Downs National Park Authority's Sustainable Communities Fund and Hampshire County Council Arts funding.

East Hampshire District Councillor Ken Carter, member of the Shipwrights Way Steering Group, said: 'These sculptures are a unique feature of the Shipwrights Way and will encourage visitors to the area. I hope they will also prove to be a matter of local pride, particularly for those groups who contributed their ideas during the design process.'

Andrew Lee, Director of Strategy and Partnerships for the South Downs National Park, said: "It's wonderful to see the first of Richard Perry's sculptures in their new home, celebrating the thoughts and ideas of local communities along the Shipwrights Way. I am sure that they will add an exciting and inspiring new dimension for people exploring this part of the South Downs National Park."

Each sculpture has a QR code that will take people to the updated Shipwrights Way website ([www.shipwrights.org.uk](http://www.shipwrights.org.uk)) and an explanation of why the sculpture has been chosen for its location.



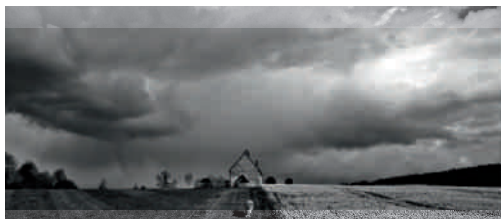
# Photography Club

## Rowlands Castle Photographic Group.

by Ann Page

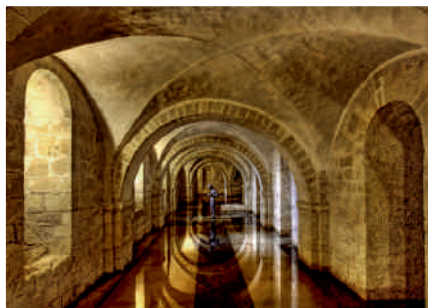
Having had a break over Christmas the photography group has welcomed in the new year at the January meeting with an interesting insight into how to plan ahead to get the best location and light for a landscape photo with a CD called "Chasing the Light" by David Norton.

This was of particular interest to club members as they prepare for taking images for next year's 2015 Rowlands Castle Photographic Calendar. We thank all the shops and premises that so willingly sold the 2014 Calendar for the club and look forward to inviting them to participate in selling the Calendar for the village next year. We are also very grateful to everyone who purchased the calendar making it such an overwhelming success.



As a club we have decided to recognise this support by donating 50% of the profits from the 2015 calendar to two village causes the Finchdean Chapel and St Huberts Chapel who have both suffered as a result of the floods.

The February meeting continued the theme of planning ahead with a lively talk from Steve Radcliffe who is passionate about making the most of interesting light and weather conditions to enhance his images together with using thirds and diagonals to get a truly amazing image. This of course is a mystery to most of us who just point and click and hope the camera will capture what we see. We were captivated by his truly amazing images of Iceland and Arizona and not forgetting St Hubert's Chapel.



We welcome new members of all abilities. The photography club is all about helping people to get to grips with their camera's and become confident in taking images that they can be proud to share or keep. We help each other by bringing along photographs we have taken

# Photography Club

and sharing things that work and some that don't.

We have a varied programme throughout the year with relaxed meetings every third Thursday of the month starting at 7.30pm in the village hall. The programme for the next few months are as follows:-

March 20 Andrew Whitmarsh wildlife & nature photographer  
[www.andrewwhitmarshphotography.com](http://www.andrewwhitmarshphotography.com)

April 17 Michael Woodward Portrait photography workshop.  
[www.mikewoody.co.uk](http://www.mikewoody.co.uk)

May 15 Heather Coulson 35 years of industrial photography <http://www.heathercoulson.com> Visit her website and be amazed at the beauty of her work.

June 19 Members pictures - workshop to share and learn new techniques.

July 5 Village Fair Photographic Competition



The photography group would also like to encourage everyone to pick up their camera's, phones or tablets and start taking images that can be entered into this years Village Fair Photographic Competition.

There are three classes for Children depending on their age and it is completely open for them to choose what they want to take.

There are also Six classes for Adults with a variety of topics that will suit everyone. From a local image where you can take a photo within a 3 mile radius of the village green.

There is also one on the weather (the good the bad and the ugly) there is no shortage of opportunities at the moment for images of rain, wind and flooding.

The other exciting topics include People a moment in time), Close up (in the garden), and Animals (all creatures great and small).

Anyone wishing to get more information about the Rowlands Castle Photography Group can contact the club founder Pat Carter ([patcarter123@hotmail.co.uk](mailto:patcarter123@hotmail.co.uk)) or phone 02392 413136.

We look forward to seeing you at our next meeting and keep clicking.

# Flooding

## Sandbag thief undermines flood defence work by Will Parsons Communications Officer EHDC

A thoughtless thief put at risk homes and businesses in Finchdean by taking around 150 sandbags put out for local residents to use.

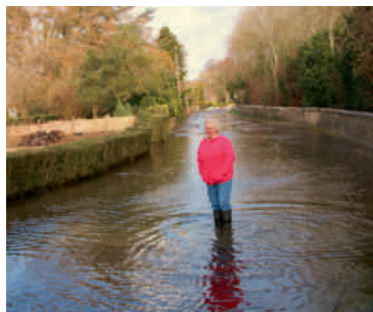
They were taken from a pile of around 400 sandbags delivered to the flood-hit village by East Hampshire District Council and Hampshire County Council who have been working closely with residents to protect properties. The sandbags were intended to divert water away from over a dozen homes and businesses that would be flooded if a culvert overflowed.

The loss of the sandbags, which were seen being loaded onto a trailer pulled by a 4x4 car, could have led directly to those properties being flooded. EHDC officers have been working around the clock to protect properties in East Hampshire's worst affected areas.

In Finchdean and Rowlands Castle staff worked from 3am to defend homes from the rising water. Around 2,000 sandbags have been distributed to the area by officers who have worked closely with residents from the local Flood Action Group.

Culverts and ditches have been cleared to allow the water to drain away and the council has provided five portaloos for those residents whose private sewage systems are not able to cope with the conditions.

Elsewhere in East Hampshire, 40 sand-





bags have been provided in Chalton to protect threatened properties and there has been localised flooding in Petersfield and East Meon.

Cllr Ferris Cowper, EHDC Leader, praised his staff's dedication and the effective partnerships between authorities, including Hampshire County, and local residents.

"Our officers have been very active, responding to residents at any hour of the day and night, and working with partner agencies to reduce the impact of the weather," he said.

"In Finchdean the community's Flood Action Group has been a model of local community engagement and mobilisation, with residents working as a team to protect each other's properties. Residents are greatly appreciative of the support that EHDC has provided so far and we will continue to work hard for them over the coming weeks."

Steve Protheroe, chairman of the Rowlands Castle Parish Flood Action Group, said: "We have been getting a first class service from all the authorities. They have given us a great response no matter the time of day."

He particularly picked out one EHDC officer, Streetcare Team Leader Denny King, for praise, saying he impressed everyone with his dedication.

"Denny has done a fantastic job, he has been out here at 4.30am to work with local residents to protect homes and then came back later to check on another area. He came out on Sunday when it wasn't his shift - he has done a superlative job. We all have high praise for him and all the people who have helped us."

The flooding has led to the highest ever demand on the council for sandbags. Residents who are not in imminent danger of flooding are en-



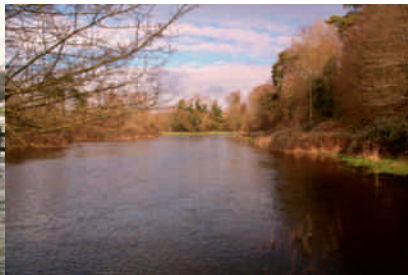
# Flooding

couraged to protect their own properties.

EHDC is looking to increase its stock of sandbags for the local community but will prioritise vulnerable residents and will focus on homes, rather than garages and gardens.

If you need help protecting your property contact the Environment Agency's Floodline on 0845 988 1188.

CONTACT: Will Parsons, EHDC Communications Officer, 01730 234030



*Pictures by Clare Gamble (kayaking)  
and Fiona Charlesworth*

## Challenging gardening conditions

by Elisabeth Hall, Chairman

After the dry summer we now have the wettest winter most of us can remember, and what a challenge! The gardeners of Rowlands Castle scratch their heads and dip into the seed catalogues to plan for 2014, helped by advice from the inspiring speakers we have at the Rowlands Castle Gardening Club. The club meets at the Church on the Green at 7.30pm on the third Wednesday of each month, and the 2014 programme includes two private garden visits. The meetings are advertised on the RCA website and local noticeboards. Visitors are welcome.

At the members' Christmas party we tackled a gardening quiz, which included seed and plant recognition, local photos; this was not a problem for one table, but recognising committee members from photos of them as babies was impossible for all. When it was all over, we went out into the rainy night, full of Christmas spirit and laden with raffle prizes.



## **Marathon challenge for local nursing student to make Dreams Come True**

**L**ouisa Elliott, 21, from Waterlooville will be joining thousands of runners at this year's London Marathon to raise money for Hampshire based children's charity Dreams Come True.

Dreams Come True is a charity that works with terminally and seriously ill children and young people across the country to help them fulfil their dreams. One such child is 16 year old Jamie from Gosport. He loves gardens and flowers and fulfilled his dream of a VIP trip to the Chelsea Flower Show. Jamie has muscular dystrophy, a progressive condition that causes increasing muscle weakness.

Louisa is a student nurse in her second year at the University of Surrey so has a special understanding of the valuable work that the charity does. "Working with unwell people all day I know how hard it can be for families. Dreams Come True do amazing work for children and their families, giving them something special to look forward to". This is Louisa's first ever sporting challenge and she has been using it as motivation to get fit, putting in the hard hours to get prepared, "I never used to do any exercise before this – I was so unfit! I've been training for about two years now, it's been such a challenge".

Louisa is aiming to raise £2000 for Dreams Come True. To support her please visit her online fundraising page - [uk.virginmoneygiving.com/LouisaElliott1](http://uk.virginmoneygiving.com/LouisaElliott1)

### **About Dreams Come True**

Dreams Come True is a children's charity serving the whole of the UK, Scotland and Northern Ireland. Our mission is to make dreams come true for seriously and terminally ill children across the country. Over the last 25 years we have brought happiness and joy to more than five thousand children as well as their family and carers.

**Our Vision:** That every terminally and seriously ill child with a dream has the opportunity for that dream to come true.

Registered as a charity in England and Wales (800248) and in Scotland (SC043878)

[www.dreamscometrue.uk.com](http://www.dreamscometrue.uk.com)

[www.facebook.com/Dreamer654](https://www.facebook.com/Dreamer654)

[www.twitter.com/Dreamer654](https://www.twitter.com/Dreamer654)



## Rowlands Castle Craft Fair 2014 schedule

by Hilda Tart

The regular craft fair is now going to be run by a team which includes Sylvia Tomkinson who started it in 2007. The stall-holders would like to express their gratitude to Sylvia and her husband Brian for all the hard work they have put into this successful venture. A big “thank you” is also due to Freda and Mike Stafford who have faithfully provided refreshments to stall-holders and visitors for the past few years. They have decided it is now time for someone-else to do this task. Fortunately a replacement has been found and refreshments will be provided in the new Food Hall.

The craft fairs will be held in the Parish Hall in Links Lane on the following Saturdays from 10am to 1pm (apart from May): April 12; May 17 (10am to 5pm); June 7; July 12; Sept 13; Oct 11; Nov 8; Dec 13. There is no fair in August.

There are approx. 25 stalls selling unique hand-made items including Jewellery, Bead-work, Glass-work, Pewter-work, Textiles, Knitting, Patchwork, Quilting, Cards, Photography and Woodwork. Admission is free.



In April there will be two additional features. In the newly designated Food Hall you will be able to purchase artisan bread, locally sourced meats, cheeses, fruit, veg, cakes and preserves. The choice will vary according to the season. The Stanstead Farm Shop will have a presence, as will (we hope) the local WI and several other producers. A Knitting Clinic is also being offered so, if you need advice about a problem with a project, bring along your yarn & instructions.



On 17 May we are participating in the Havant & Waterlooville May Days Arts Trail for the first time and stall-holders will display some of the materials and tools they use in their craft, and, where practical, some work-in-progress. All are happy to answer questions about their craft and you might find you are inspired to take up a new hobby!

Enquiries to: [pandqforyou@btinternet.com](mailto:pandqforyou@btinternet.com)

# 1st Rowlands Castle Scouts

## Scouting in Rowlands Castle

by Nicci Lucas

Christmas seems such a long time ago now, however just thinking back a few months to the Scout hall being filled with 40 excited boys at our Christmas camp will be a memory that I will never forget. The Scouts arrived on the Friday 13<sup>th</sup> December and camped outside for the weekend, the cubs joined them on the Saturday for games and camped inside the hut for the night (under canvas) and the Beavers joined in Sunday morning creating Christmas decorations. This was all happening whilst various helpers were preparing a Christmas lunch for them all!! I can't thank you all enough for the effort that went into making the weekend happen and so enjoyable for everyone.



Congratulations to Jodie who was officially invested into the group by Ian Hawke as a Beaver leader and I was invested as Group Scout Leader.



Also congratulations to Ben Lucas and Jack Moth who achieved their Scout Silver Award and to John Daw, Oliver King and Brendon Watkins for achieving their Bronze. These awards are the highest ones that they can achieve within their section and are gained by completing

a series of challenge badges. They show commitment and persistence so well done to you all. Within the group we have also awarded many other badges to those who have worked hard and achieved the requirements so congratulations to you also.

# 1st Rowlands Castle Scouts

2014 started with great excitement as we saw James Ketchell safely arrive home, having cycled around the world. James is a Hampshire Scout and Ambassador for scouting. Following a serious motor cycle accident in 2007 and told that he would most probably suffer from a permanent walking impairment, he decided to prove everyone wrong. Since then he has single-handedly rowed the Atlantic Ocean, has reached the summit of Mount Everest and now just completed this mammoth 18,000 mile cycle around the world. We are hoping that James will come and speak to the scouts about his achievements in the near future.



We would like to take this opportunity to thank Rowlands Castle Parish Council for very kindly donating some games and equipment to the Girl guides and Scouts. They have really enjoyed having fun with all the games especially at their Christmas camp particularly the table tennis.

Scouting helps children reach their full potential and helps them to develop skills including teamwork, time management, leadership, initiative, planning, communication, self-motivation, cultural awareness and commitment. This everyday adventure is only possible thanks to our dedicated team of adult volunteers and I would like to thank you all for your continued support and dedication. If anyone would like to get involved or have youngsters that wish to join in the fun then please do contact me on 02392 412543.

## Farewell to Fred Beer

by June Hargreaves-Beer

Fred was born in Cardiff, a fact of which he was very proud throughout his entire life. He was not a Welsh singer, although he had the lung power but, unfortunately, could not sing in tune. His Welsh accent, which had perhaps faded somewhat during his years of travel, strengthened again after each visit we made in latter years. He was an only child but acquired an “honorary” brother when his cousin Dennis came to live with his family after the death of both his parents. The two little boys loved each other as real brothers, though I think Fred took on the role of bossy big brother.

In his teens, Fred developed what was to become a lifelong passion for cycling. He joined the Cardiff 100 Miles Road Cycling Club and some of the friends he made there would have been here today were it not for age or ill health. With his Gran’s cold rice pudding in his back pocket, a woolly red bobble cap knitted by his Mum on his head, he would cycle with his friends for several miles to take part in a race, sometimes sleeping under a hedge, or in a barn if they were lucky, before cycling back to Cardiff again. When asked by his anxious Gran where he had slept, he would reply in “The Barn Hotel”. He was a good cyclist and won a number of races.

He served his National Service in the Royal Air Force then, as his father had died of tuberculosis, decided to study microbiology and went to the Hammersmith Royal Free Hospital. He had no money so he travelled from Cardiff to London on his bicycle, with his worldly possessions in his father’s old leather suitcase across the handlebars. Arriving in London he slept on Wimbledon Common (a forerunner of the Wombles?) until Mike, his close friend who was already in London, managed to smuggle him through the window into his hostel.

Later, feeling that a change in career might be good, he visited the Labour Office, only to find that the only job they could offer him was that of a deep-sea fisherman. He turned it down, not surprisingly, and applied to the World Health Organization which was the start of a career of over thirty years. He worked in many countries, in Kenya (when he climbed Mount Kilimanjaro), and Nigeria, and then spent many years in Sri Lanka, Bangladesh and India, with shorter assignments in the Maldives, before tourism, and Mongolia. He worked in WHO’s Tuberculosis Programme and later in the Smallpox Eradication Programme. After many years abroad, he felt he was no longer European and requested a move and was posted to WHO’s Headquarters in Geneva where he worked in the Supplies unit and later in the new HIV/AIDS Programme, until he retired.





While in Africa, Fred had met and married an Italian lady, Adriana, and became a well-loved and lifelong member of her family, with whom he kept in touch throughout his life. Adriana's health deteriorated and Fred spent some years caring for her, until her death in Geneva.

Many years ago, Fred had visited WHO's Regional Office in Brazzaville, where June was working. He always said that at the local swimming pool he had seen a "luscious bit of stuff in a black bikini", who, for years, he swore was June. In the 1980s, he met June again, now working in Geneva. An old cine film showed that the bikini-clad young woman had been June's friend! A lasting friendship flourished between June and Fred, and, eventually, in December 1994, they married in Geneva. Thus started a wonderful, happy life for them both.

In 1997, June and Fred came back to live in the United Kingdom and moved into their house in Rowlands Castle where Fred was welcomed into June's family and they made many new friends. Having inherited a Koi pond in the house they bought, Fred joined the South Hants Koi Club where he became an active member, making more friends and writing amusing articles for their monthly magazine. He also joined the local Garden Club and latterly the Camera Club. He enjoyed them all.

After coming back to the United Kingdom Fred and June had joined the British Association of Former United Nations Civil Servants, known as BAFUNCS, and Fred played an active part in the Executive Committee as National Welfare Coordinator, Overseas Representative, and a trustee of the Benevolent Fund. He was always ready to help others and spent much of his time doing so. He loved writing articles, on any subject, though he always managed to squeeze in something about cycling, and fish, and his contributions to the BAFUNCS Newsletter were always well received.

Fred was, as so many of his friends have said, larger than life, had a wonderful sense of humour and a dry wit, always able to make people laugh, loved life and people, was generous, kind and caring, a true gentleman. He endeared himself to all who met him. We were privileged to have known him and shall miss him terribly. He was a much-loved son-in-law, brother-in-law and a wonderful husband.

## We want to hear from you.



Do you have something to say? The RCA Village Magazine belongs to the whole Village., and serves as a channel of communication between villagers. If you have a point of view, write a letter and we'll publish it.

Simply write to Editor, RCA Village Magazine, 19 Mallard Road, Rowlands Castle, Hampshire PO9 6HN. Email to [editor@rowlandscastle.com](mailto:editor@rowlandscastle.com)

## Gifted and Talented Maths Workshop

Francesca Wade-Palmer

On the last day of January this year, St John's CEC Primary School in Rowlands Castle hosted a workshop for gifted and talented Primary mathematicians in the area in conjunction with Horndean Technology College (HTC).

Knowing the Headteacher, Kay Pennicotte-Henrie, and the governors were keen to hold an event which supported and challenged Gifted and Talented pupils, I contacted HTC to find out if they could recommend a mathematical practitioner who could inspire, enthuse and challenge able pupils. HTC responded by recommending their very own Head of Maths, Jon Colebrook, and very generously offering to run the workshop for us.

In my early talks with HTC Assistant Headteacher Pippa Attwood, we both strongly agreed that it was very important for the day to have an overall purpose and a robust, practical bias. The emphasis on teaching maths today in Primary Education is not only to teach children how to calculate various formulae but also when and where to use them too. Linking in with St John's current major project, developing its facilities for outdoor learning, we decided that to design and cost an outdoor classroom would be a superb project for the day.

The plan was to give teams of children an overall aim whilst giving them a variety of lessons to ensure they had the skills with which to achieve this aim. In six mixed school teams of Year 5 and Year 6 children, with added support from HTC Year 9 students – one per team to facilitate discussion and calculations – the children worked to both design and cost a building that would fulfil the very specific brief given at the start. Furthermore, at the end of the day, each team was going to present their proposals by showing scale drawings and plans and explaining the costs that would be involved to an assembled gathering of parents, teachers and St John's Year 6 pupils.

In order to get every aspect covered, the workshop stuck to a strict schedule. Each team had lessons covering Area and Volume, taught by Mr Colebrook (HTC), Scale Drawing taught by Miss Morrish (HTC), Measuring and Positioning your classroom, taught by Mrs Arnold (St John's) and Cost of Materials and Budgeting taught by myself. Each Teacher gave their lesson four times enabling the average teacher to pupil ratio to be 1:6. After these information inputs the pupil teams were left to their own devices, using the skills they had learnt or revised in order to complete the task. Mrs Nicholle O'Dea, Associate Governor at St John's, came to help setting up for the presentation in the after-

noon. All the pupils were working in the hall and she noted

“the atmosphere was electric. Every pupil was totally focused on their task” Mr Bill Wilson, Foundation Governor at St John's, who was the accompanying adult with what ended up being the winning team commented “They don't need any help. Guided by their facilitator, they know exactly what they want to do and are doing it”.

Not all mathematicians are necessarily keen on Public Speaking however every single one of the twenty four pupils who attended the Gifted and Talented Maths Workshop Day worked hard to give excellent team presentations. Presenting certificates to each participant, Mrs Julie Summerfield, Head of HTC, commented on the high standard of both the presentations and the work that had gone in to the day's project. Designs had included mixtures of materials of glass, stone and wood. All were fitted the task and all came within budget – a feast in itself. She then announced the winning team – a combination of Clanfield Junior and St John's Year 5 pupils who had taken a risk with an innovative three walled classroom.

Six mainly local schools had participated in this event – St Johns CEC Primary School Rowlands Castle, Clanfield Junior School, Horndean Junior School, Portsmouth Grammar Junior School, Warren Park Primary School and Woodcroft Primary School. As Mrs Pennicotte-Henrie said “the team work was amazing, and if you looked out on to the playground, it was as if they had always been friends and not just met each other”.

The day was a triumph of endeavour and achievement. Able pupils came to learn new skills and apply them and this they did with great merit. We would like to thank Horndean Technology College, Head Teacher Mrs Summerfield and her staff and students for making it possible for us to host this Gifted and Talented Maths Workshop Day. The year 9 students were diligent and attentive to their group's needs, helping them overcome tricky problems. Mr Jon Colebrook led a stimulating day with flair (he proved that in a group of over 24 people the chance of finding two people with the same birthday is far greater than you would imagine!) inspiring, enthusing and challenging the attending pupils just as we had asked..



*The winning team members are:-  
from left to right Seth Wakefield,  
Russell Pope, Lucy Mannie all  
from Clanfield Junior School and  
Rhys Marchant and Jonty Oliver  
from St John's.*

# Rowlands Castle Women's Institute

## WI says farewell to a dear friend

by Rona Musker, President, Women's Institute

We started the year with a Coffee Morning in the Church on the Green which was the last push to make money for our Good Causes which have been the RVS Luncheon Club and the Rowlands Castle Youth Football Club. I am delighted that we made £271.20 bringing the total for the Causes in 2013 to £1171.20. A big thank you to everyone who has supported us during the last year.

Our first Spring event was the Jumble Sale on March 1st in aid of this year's Good Causes which will be decided on soon. Again, huge thanks to all those who helped on the day, especially to Jackie Oliver for co-ordinating it so efficiently, and to all of you who came and supported it. The proceeds were an amazing £710.96, up £200 on last year.

Meanwhile we continue to keep members busy with a variety of activities and visits: a lunch in the lovely Vicars' Hall at Chichester Cathedral in February was a great success; a visit in March to the new Mary Rose Museum and another to the RNLI HQ in Poole in May. In addition we go tenpin bowling, enjoy walks (most recently to Stansted with a delicious lunch to restore us); are creative at our monthly Craft Club, discover new and interesting books both at the Book Club and the Reading Group. Yes - and there are skittles and quizzes - something for everyone!



# Rowland Castle Women's Institute

Looking forward to next year, 2015 is the Centenary of the National Federation of Women's Institutes and we already have a Committee planning special events to celebrate this memorable occasion. We want to involve the whole village - so watch this space!

On a sadder note, we regret the passing of Marjorie Neate on New Year's Day. She was 102 years old and a member of Rowlands Castle WI for nearly 60 years. Many of us remember a tea party we held for her in the Parish Hall to celebrate her Centenary when she reminisced about her years in the WI - with great clarity and without a note!

She was a remarkable woman who will be sadly missed.



*Marjorie Neate at her 100th birthday party*

## Royal British Legion

With loyal helpers, we stood (in the rain) with collecting tins in the village for one week. Street collection amounted to £428, and with such helpful staff in the shops, Golf Club, pubs and Shell garage, the total collection was £2069. A tremendous effort.

With so many thanks, Anne Haigh.





# Rowlands Castle Painting Society

## Spring

by Terry Devaney

Members of Rowlands Castle Painting Society are looking forward to a busy year of painting and drawing, having finished last year with a great Christmas party, which as usual, was very well attended. It was an opportunity for some of the new members to become better acquainted with the other artists, party games and competitions were enjoyed by all. The Christmas card competition was won by Gary Miller, the Holiday painting was won by joint winners Pat Hoper and Bob Payne and Maureen Aldous took the prize for the best photograph of the year. The annual Spring Art Exhibition has just taken place and we hope many of your readers managed to come along and enjoyed seeing the work members put on show.

This year's programme has a lot to offer, there have been some great evening demonstrations already this year, Soraya French and Chris Jones amongst others have wowed the members with fabulous demonstrations, leaving their audiences marvelling at the skill shown, where work of exceptional standard is produced in under two hours. Afternoon workshops are given by members who take turns in leading an afternoon of creativity. Now they will be concentrating their energies into producing paintings for the Silver Cup Awards, where all categories of different mediums are entered. This is an exhibition of work by the members, for the members, who vote for the best artist in each category. The next item in the Society's programme will be the outdoor picnic/painting meetings, please see the website for details. We look forward to some good weather and happy painting days!

[www.rowlandscastlepaintingsociety.org.uk](http://www.rowlandscastlepaintingsociety.org.uk)



*Terry's workshop*

# Rowlands Castle Bridge Club

## Our 10th Anniversay

by Barbara Vincent

On 26<sup>th</sup> March members celebrated the 10<sup>th</sup> Birthday of the Bridge Club. Over this time the Club has provided weekly duplicate bridge to village residents and many others every Wednesday evening. The attendees on that evening included 24 of the original members who have played regularly over the ten years!

The Club is run by village residents Barbara and Graham Vincent. It meets in the large hall of the St John's Church centre which provides an excellent venue including good heating, lighting and car parking. Our aim is to provide a friendly but competitive atmosphere and to ensure less experienced bridge players are not intimidated.

We warmly welcome new bridge players of all levels of experience. If you have only played rubber bridge in the past please come and give duplicate bridge a try.

If you want to know more about duplicate bridge before coming to the club, Barbara & Graham are happy to offer an introductory session in their own home. If you would like to know more about the club or have any questions then please call Barbara or Graham Vincent on [023 9241 2197](tel:02392412197) or email [barbara@vincentgb.co.uk](mailto:barbara@vincentgb.co.uk).



*Bridge Club in session*

# Rowlands Castle Tennis Club

## An Exciting Year

by Alan Best

After a year of sport like 2012, who would have thought that 2013 could follow it – well it did, certainly it did at some tournament in SW19 and also in PO9! With the weather finally living up to expectations there was a lot happening at RCTC, both socially and competitively. In 2012 we had our youngest men's singles winner and in 2013 this was followed up with our youngest Men's Doubles and Mixed Doubles winners – all aged 15, and one of the Ladies Doubles winners was also just 15!

For a small village club we continue to do well with just over 300 members, a significant number of them being playing members. Some of the highlights of the year included:

A number of social tournaments including 3 American Tournaments, The Royal Tournament and a Social Christmas tournament – all fully subscribed (at least 20-30 people at each tournament, although unfortunately the Christmas one and the very popular Family tournament held in September both had to be cancelled due to the weather)

Club competitions were well attended again with the finals weekend bringing some excellent matches and some of our youngest winners – Matt Lee, Alice Wilkinson, Ed Wren and Indi Rowley all featuring amongst the winners

The club's teams continued to enjoy some success in the Portsmouth & District League. During the winter season ending in March the Men's team ran out winners of their division while the Mixed team were runners up in theirs. The Ladies finished 3rd, but with the same number of points as the second team, losing out only by a single game. With all the club's teams having gained promotion in the previous season, the summer 2013 programme proved to be a tough one, with the men narrowly avoiding relegation, the Ladies finishing respectably in mid table while the Mixed team surprised themselves by challenging for promotion, finishing 3rd in a highly competitive league. The Mixed team did win something though – they were awarded 2nd prize in the fun competition for the team providing the best after match tea!

With Adult coaching taking place on Tuesday evenings and Friday lunch-times, Junior coaching continuing on a Wednesday evening - with juniors attending from beginners up to improvers - and with club nights (Monday and Fridays during the summer) and Club afternoons on a Saturdays in the winter – all of

# Rowlands Castle Tennis Club

which were well attended – there are lots of opportunities to play for players of all standards.

The first club outing to the Masters Tennis at the Albert Hall was also held with over 40 members enjoying a very good day out in London

The quiz night in November was once again a great success with over 100 participants in a close fought contest and excellent questions once again from the quiz masters (John Marengi and Mark Cooter)

The launch of our new website – have a look at it at [rctc.co.uk](http://rctc.co.uk) and see what is going on at the club.

The committee are already planning the year ahead and anyone in Rowlands who would like to join to either learn to play, or to get out their rusty racquets is encouraged to join us. Try the web site as a first port of call, or em the Chairman (Robin Thompson) on [chairman@rctc.co.uk](mailto:chairman@rctc.co.uk) or the Secretary (Alan Best) on [sec@rctc.co.uk](mailto:sec@rctc.co.uk)



## For all your fencing needs

**Suppliers & Erectors of Every Type of Fencing Including:**  
**Chainlink • Palisade (wood or metal) • Panels**  
**Closeboard • Weldmesh • Posts (concrete or wood)**  
**Security Fencing • Trellis • Gates**



We also offer a friendly reliable and competent skip delivery service to all local areas. Our skip sizes are mini, midi and maxi and we also provide a Grab service.



**TRADE  
AND  
PUBLIC  
WELCOME**

**Visit our website for any fencing prices or call 023 9241 2768**  
**[www.caroway.co.uk](http://www.caroway.co.uk)**

**Caroway, Station Yard, Bowes Hill, Rowlands Castle, Hants PO9 6BP**



**Brother, Sister  
Can You Spare  
Some Time ?**

## **ROWLANDS CASTLE GOOD NEIGHBOURS**

provides practical neighbourly support in and around the village, mostly giving lifts, health related for hospital, health centre, dentist, etc, social visits to clubs, hairdresser etc or shopping.

We have a steady and faithful group of volunteers and a growing number of clients. Unfortunately some volunteers can't help at the moment, so the challenge of more lifts is falling on fewer helpers. The vast majority take place on Mondays to Fridays 9 to 5 but there are occasional 'out of hours' and weekend calls.

If you are available during those hours and could spare 1 or 2 hours each month please consider joining Good Neighbours as a volunteer. Most volunteers are long term and find it satisfying and clients are very appreciative.

Volunteers need a car and need Disclosure & Barring Service (DBS) (formerly CRB) clearance which is provided at no charge. A modest mileage allowance is paid.

*If you could spare some time each month* and are interested in becoming a volunteer please contact Ian Hewitt on 023 9241 2941 or Christine Funnell on 023 9241 2285. Please think about it. We really do need a



## Contrasts Contemporary Jewellery Fair

by Jonquil Tonge

The Contrasts Contemporary Jewellery Fair last November celebrated it's fifth year organised by Jonquil Tonge and Silvia Tomkinson and was a great success. As usual there was a broad range of stunning jewellery which impressed the public, demonstrating the original and imaginative designs which has always been a hallmark of the fair. We saw Moulton silver and gold pieces with set precious stones and jewellery made out of resin, wood and steel. Accurately crafted small architectural forms made from silver and gold as well as semi kinetic pieces with moving silver beads and pearls.

There were also plenty of necklaces made out of semi-precious beads and earrings and brooches using Swarovski crystals and Dichroic glass. Throughout the day there was a steady footfall and from the feedback we received from both visitors and exhibitors everyone seemed happy with the organization and quality of the products. The next Contrast Contemporary Jewellery Fair will take place at St Johns Church Hall in mid-November 2014. Jonquil Tonge  
For enquiries contact:- [jonquil.tonge@btinternet.com](mailto:jonquil.tonge@btinternet.com)



## Winter Birds

by Ann Page

**T**his winter may be the wettest we have had in a long time, but it is not all bad news. The flooded fields and hedgerows are forcing the Redwing Thrushes and Fieldfare Thrush into our gardens. We normally only see them when there is thick snow on the ground, so this is a welcome treat.



*Redwing*

a grey body with brown shoulders and a speckled chest they both only visit us in winter.

We shouldn't forget our regular garden birds as they are finding the water logged ground just as difficult as we are. If you put out feed in feeders only put enough to feed for one or two days and top it up once it has been eaten to stop it going mildew in this weather. This fieldfare is enjoying a plum put out for the birds in a garden in Bowes Hill.

Often in small flocks if you spot a Redwing a Fieldfare will not be far away as they often live and fly together. They are attracted to berries in the garden, and can strip a large Rowan, Cotoneaster, Berberis or Pyracantha in a couple of days.

The Redwing has a distinctive white stripe above its eye and red feathers below the wing, while the Fieldfare has



*Fieldfare*

## Farewell Alma and Roy Gunston by Heather and Peter Stitson

**I**t is with regret that I would inform you of the passing of Alma and Roy Gunston residents of Rowland's Castle from 1972 through 1989 when they retired to Hailsham.

Alma and Roy were married for 64 years having met in 1944 they were married in 1947. Alma died on the 24th November 2013 and Roy on the 21 May 2011. Their legacy is three children, Robin, Mary and James, 6 Grandchildren and 7 Great Grandchildren.

Alma featured prominently in Village life. Together with a band of ladies she created the Thursday Luncheon club for the elderly back in the 1970s and it still runs today, a significant village benefit. Alma made a major contribution to the WI throughout her time in the Village, and was a committee member. The St Johns Church benefited from Alma's support with the Good Companions and church cleaning. In later years she organised the collection and delivery every weekend of handicapped children to school and was renowned for her "motherly" attention, supplying copious volumes of sweets, sandwiches and drinks to many grateful children.

Roy joined the Royal Navy in 1940 to serve in WW2 aboard various ships including HMS Malaya, HMS Valiant and probably the most notable being HMS Belfast on the Artic Convoys. He also saw service in the Mediterranean, the Pacific and Australasia winning 4 service medals. Unfortunately he died before receiving the Artic Convoy medal. Upon leaving the Navy he joined the Inland Revenue spending his whole working career in various offices across the South of England. Like Alma he was very active in Village life, supporting Alma, and particularly within St. John's Church. He was Church Warden on several occasions and was the organiser of the Men's group meetings. There were some notable visits, one being to the underground Farlington reservoir which will not see human feet for about another 90 years. He was a DIY enthusiast for the church undertaking various maintenance tasks, including painting the interior. Roy was a very active and supportive member of the Rowland's Castle Conservative Association.

Alma and Roy took their various commitments to the Village very seriously and were sadly missed when they moved to Hailsham in January 1989 and for many years thereafter. God bless them both.



# St John's Church

## Flower Festival and Upcoming events by Revd Trevor Filtness Vicar of St John's

**A** slightly quieter period for St John's, if you discount the Christmas period and my licensing as the Priest-in-Charge (Vicar) of Rowlands Castle! A big thank you to everyone who came to the licensing and especially those who gave the official welcomes. I am afraid that we are still not moved into the Rectory in College Close but we will, as soon as the leak in the roof is fixed. The builders need to have 3 days without rain so they can do what is necessary. You can imagine that there is a degree of uncertainty!

Another notable event was our hosting of the Denmead Operatic Society which performed the Vicar of Dibley over three nights in December. A splendid event. They will, we hope, be returning in early December this year for another Vicar of Dibley entertainment.

You may remember that I announced a pre-Christmas 'Messy Christingle Service' in the last magazine. This proved to be hugely popular and we were almost overwhelmed with about 150 mums, dads, grandparents and children. The feedback was so good that we will be holding a Messy Easter on Sunday 13th April which is Palm Sunday. Do come and join us, there are more details below.

The gushing leak in the church roof has been successfully cured with the installation of two large roof channels to take the quantity of water. Can I thank everyone for their most generous gifts which have enabled us to make the repairs so swiftly. We now have to tie the porch back to the church as there is a danger of separation together with one or two other ongoing important repairs to the church and churchyard. One of the causes of the problem with the church porch was the adjacent huge Cypress Tree which was destined for felling.

The tempest at the end of January actually brought down a very large branch which just missed the church and praise God, without causing any injury. A passing Good Samaritan tree surgeon cut up the branch without charge – thank you Jason.

This is of course good news but we are all well aware of the flooding yet again along the Finchdean Road, the problems caused by the Lavant Stream and of course Finchdean itself. These seem, sadly, to be annual events but we pray that these problems



# St John's Church

will soon be solved by the experts. Our hearts go out to those yet again affected by this flooding. I know that Steve Protheroe has been working tirelessly during this period to co-ordinate help in the fastest possible way. Well done to Steve and all those who helped out. We pray that there will be some respite soon.

And here are our Easter period services:

Sunday 30th March at 10am: Mothering Sunday, a family service with St John's School Choir.

Sunday 13th April at 10am Palm Sunday Messy Easter (the beginning of Holy Week) in the Church Centre and Church. Lots of activities and fun for youngsters with coffee, cake & biscuits to begin, enjoy a variety of crafts (making Palms?), a procession, singing songs and lunch!

14th to 16th April: at 7pm each evening: Meditations for Holy Week

Maundy Thursday 17th April at 7pm: Share the Last Supper with us in our Church Centre then silent Vigil until midnight in Church.

Good Friday 18th April at 9am: An Hour by the Cross in Church followed by a Walk of Witness to the Green and a 30 minute open air praise service; then Hot Cross Buns in the Church on the Green.

Easter Day Sunday 20th April: About 5.30am Dawn Eucharist, 8am Eucharist and then 10am Eucharist for All on the Green. Followed by Coffee and buns in the Church on the Green.

And as a final footnote Bishop Christopher Foster, the Bishop of Portsmouth will be opening the Outdoor Worship Space at St John's School on 22 May.

With every blessing

Trevor

Rev Trevor Filtness

Vicar

St John the Baptist

Rowlands Castle

07785 568056

02392 410111 (Office)



# Safer Neighbourhoods

## Message for East Hampshire Communities

by Karen McManus East Hampshire District Safer Neighbourhood Team Inspector

Hello, I am the New Safer Neighbourhood Team (SNT) Inspector for East Hampshire District. I have 22 years service in the Hampshire Constabulary, working mainly in the North of the County.

I firmly believe in the Policing Priorities set of Protecting our Communities from Crime & Harm, Providing an Excellent Service and An Active Presence in every Neighbourhood. As well as the usual methods of contacting and interacting with the police, the SNT teams each have twitter accounts to enable them to give information and advice. Recently the tweets have been heavily based on flooded roads! However they also have links to crime prevention advice and information. Please do not use twitter to report problems or incidents. Dial 101 or 999 if there is an emergency which will ensure you get the right response for the incident. Please phone the police if you see any suspicious incidents, information we receive from the public is invaluable in our fight against crime and criminals and often is a missing link in evidence gathering in investigations.

East Hampshire remains one of the safest place in the country to live and work. You can make your property even safer by following Crime Prevention advice on the Hampshire Constabulary website and by registering your property details on the Immobilise website (details below). This enables us to identify stolen property very quickly, and often results with owners being reuniting with their property. If you require any further specific crime prevention advice, please contact us and we can assist you further.

<https://www.immobilise.com/index.php>

<http://www.hampshire.police.uk/internet/advice-and-information/>

## Busy Year for Parish Hall

by Kath Molloy Chair RCPH Management Committee.

Last year was yet another busy year for the Parish Hall with the continuation of major refurbishment and upgrade work taking place in the run-up to the Halls Centenary in April 2014 which we will be celebrating on 31st May 2014. Since the extension was built back in 1990 more work has taken place in the last 5 years than for some time.

The commencement of the Oakland's development on Redhill Road triggered the release of funds amounting to £21,000 from the developer earmarked specifically for the Parish Hall. With 2014 being the Halls Centenary year the Management Committee were keen to utilise this fund to upgrade the Halls Facilities. Applications were also made to District and County Council funding opportunities to add to the monies available for the upgrades, thanks to Cllrs. Marge Harvey and Sam Darragh.

By the end of 2013 the main hall floor had been restored to its original condition and new lighter tables and more comfortable chairs were purchased together with a trolley to aid manoeuvrability. The kitchen has also been re-furbished and at the time of writing we are just awaiting the arrival of a dishwasher to complete the project. Donations from the Women's Institute, Portsmouth Motorcycle Club and the RCA have been put towards the purchase.

In 2012 and early 2013 repairs to the flat roof used up a considerable chunk of the ring-fenced money held by the Parish Council and the leaks meant a subsequent refurbishment of the ladies toilet was required. Major electrical works have been carried out to bring the wiring up to a legal standard and further roof work was carried out at the front of the Hall. Wooden fence posts damaged by the weather have now been replaced by concrete posts and together with some replacement panels have made the rear fence a lot safer, thanks to Caroways

The major refurbishments necessitated some associated works. In the main Hall the stairs to the stage were cut into the stage itself replacing the 'portable' ones and the doors at the front of the stage were altered to avoid damage to the new floor. The RVS cupboard has been extended, a new hardwood frame put in for the rear doors leading to the garden and the buttresses at the front of the Hall have been stripped and re-built (although no-one noticed). The Management Committee are planning to redecorate the front of the Hall before the Centenary celebrations taking place on Saturday 31st May. The Hall suffered relatively lightly in the recent flooding but we did have to replace the floor in the rear passageway although this was covered by our insurance policy.

The Management Committee have been very pleased with all the works carried out and we have had very good feedback from both our regular and ad-hoc hall users.

We would like to take this opportunity to thank all the Village and Local Community groups that continue to support the Parish Hall. The regular bookings are the lifeblood of the Halls income stream but we still rely on grants and donations to keep our

# Parish Hall News

heads above water. In addition to the Oaklands money and Council grants referred to above we have received donations from The Oak Foundation, The Fawcett Charitable Trust, Portsmouth Motorcycle Club, Good Neighbours, Womens Institute, Rowlands Home Hardware, RVS, and the RCA. The Parish Council continue to support the Hall financially and we must also thank those villagers who support our annual fund raising jumble sale.

Thanks must also go to a number of local tradesmen and companies who have carried out the various jobs both large and small and also our Parish Council for their continued help, support and guidance.

The current committee consists of:

Kath Molloy Chairperson

Mike Stafford Vice-Chair

Robin Reucroft Treasurer

David Symonds

Barbara Openshaw

Bill Wilson

I would like to thank all my committee members for their work and support over the last year and just to let everyone know that the Parish Hall AGM is planned for Tuesday 20th May, details to follow in due course.

## PARISH HALL CENTENARY CELEBRATION EVENT 31st MAY 2014

The Parish Hall Management Committee are organising an event on the afternoon of Saturday 31st May to celebrate the centenary of the Hall. The event which will run between 2pm and 6pm will centre around an afternoon tea accompanied by:

**REFLECTIONS** A singing group not to be missed and:

**THE FB POCKET ORCHESTRA** A jazz trio again not to be missed  
We would like to invite as many of you as possible to come along to celebrate the first hundred years of our much loved Parish Hall.

Please put this date in your diary.

Plans are still being finalised and further details will be published as widely as possible nearer the time.

## Potholes

by George Hollingberry MP

**P**otholes in the road really do cause a considerable amount of trouble at this time of year and leave the public pretty angry too.

It's close to being the number one bugbear and I fear this year's bad weather is not going to make it any better.

It's such a big nuisance that there's even a website dedicated to them at [www.potholes.co.uk](http://www.potholes.co.uk) – a real mine of information, including advice on how to claim for damage to cars.

On a more serious note, potholes can cause accidents - particularly for cyclists - and a car damaged could mean a hard working motorist is out of pocket, and that's no laughing matter.

It's also costing lots of public money, as around £23.8 million was paid in compensation by local authorities across England last year due to the poor condition of their roads, according to the Asphalt Industry Alliance. Saying that, I don't think the situation is as bad in Hampshire as in other areas of the country - including some neighbouring counties.

There is no doubt that several recent bad winters and the economic situation have led to problems, but the Government has provided £3.4 billion to local authorities from 2011 to 2015 for road maintenance and says that, if the cash is used wisely by them, there shouldn't be a problem.

But one of the major issues is that councils need to be able to target potholes in a more efficient way. Now, there are some pretty talented people at the county council but no-one, I believe, has a magic ball telling them where the damage is. The fact is the council can only fill a pothole if they know about it. If you want it repaired, you need to report it.

This can be done by contacting Hampshire County Council. They have a webpage dedicated to pothole reporting at: <http://roadenquiries.hants.gov.uk/roadproblems/highwaydefect/pothole.aspx> Or call them on 0845 603 5633.

The Department for Transport has also pledged £30,000 to further develop a smart phone app for Android called Fill that Hole that has been used by cyclists on iPhone since 2010 to report potholes. It should be in wider use next month, which is apparently the start of the 'pothole season'.

More information about the app can be found at: [www.fillthathole.org.uk](http://www.fillthathole.org.uk)

# Local Council News

## Flooding, Planning and Other Matters

by Chairman of the Council, Cllr J Pickering, and Clerk to the Council, Lisa Walker

As we write this at the end of February, there is, at last, some sign of a let up from the relentless rain and consequent flooding we have experienced over the past couple of months. Residents in Finchdean and on Finchdean Road in particular have battled to hold out against the floods. The high water level at the ford in Woodberry Lane has affected many motorists and walkers, as well as local residents.

Once again, we owe grateful thanks to Steve Protheroe for the dedicated and effective way he has led the Parish's Flood Action Group (FAG), ably supported by the Flood Wardens, especially Alex Finch and Andy Lee in Finchdean. We have received good support from HCC and EHDC, together with Cllr Marge Harvey and George Hollingbery, our local MP.

Given the high level of community spirit shown, it is a pity that some landowners did not clear their ditches in time to assist the water flow. The theft of some sandbags at Finchdean, and the thoughtless behaviour of some motorists driving through flooded areas at speed, has been disappointing. We hope that should such a situation arise again, everybody will act with thoughtfulness and consideration, not just the vast majority.

The Parish Council has submitted comments on proposals made by the Inspector following his Examination, last Autumn, of the EHDC/SDNPA Joint Core Strategy. We are concerned that the Inspector is proposing to change the description of target housing numbers from "about" to "a minimum of". This could cause serious uncertainty as to the overall numbers actually required. We have also called for a reintroduction of the previous commitment to prioritise the development of brownfield sites. Even if this may not be as attractive for developers, it would help to minimise further incursions into the more rural areas outside settlement policy boundaries.

We have also drawn attention to the apparent increase in the required housing numbers for places like Rowlands Castle that are a consequence of the reluctance of SDNPA to envisage much new housing in the National Park, together with the slower than originally envisaged rate of development of the new Whitehill & Bordon eco-town. Unfortunately, many parishes in EHDC seem to adopt a passive approach to such important planning issues. It also has to be said that we have not found EHDC to be particularly communicative or helpful in relation to issues on which we have sought their advice or comment. It is now five months since we learned that EHDC plans a specific study of housing development possibilities across the 3 South of Butser parishes (Clanfield, Horndean, and Rowlands Castle). Despite various reminders, we still await details of this proposed Study. Such lack of information is not helpful to your parish council.

We are well aware of the Govt's encouragement of the production of Neighbour-



hood Plans. Until we are clear on the Inspector's final determination of required housing numbers in the Parish, and the way applications to supply those houses will be dealt with, we do not think it even practicable to consider whether we should produce such a Plan. What is clear is that it would require considerable effort on the part of volunteers, it would probably take 2 years to produce, and would incur significant expenditure of funds. There has to be a significant potential benefit to the Parish if we are to embark on such a course of action.

Recently, the Govt has relaxed some planning rules so that applications for relatively small-scale proposals will only need to be referred to immediate neighbours, not the wider community or the Parish Council. EHDC will send details of such applications to neighbouring properties, which will be addressed to 'The Occupier', so please be careful not to bin such communications without opening them!

In the last 24 hours, we have been notified of a Planning Appeal in relation to the Keyline site. This was previously refused on various grounds, including lack of affordable housing provision.

Despite the wet weather causing some recent disruption to the football fixtures, the Recreation Ground continues to be well-used. We are particularly gratified the outdoor gym equipment has proved such a hit with young and old alike. If you haven't tried it out yet, then now's your chance as the weather (hopefully) improves.

In early April construction work will start on the extension to the Pavilion. This will be undertaken by Topmarx Ltd, which was awarded the design and build contract after a formal tendering process. Once complete, the extension will provide 2 publicly-accessible WCs with baby-changing facilities and access for disabled people, an additional referees' changing room, particularly for use by the increasing number of female match officials, additional clubroom/storage space, an 'outside room' at the front for clubs and sporting organisations to meet, train, entertain etc, and a deeper covered patio area.

The project, which has been progressed so effectively by Cllr David Symonds, will cost in excess of £100K (excl VAT). The majority of the funding will come from existing developers' contributions. The Council also has funds set aside to contribute to the project, and Cllr Marge Harvey has promised funds from her District and County Councillor's Discretionary Funding. In the first instance, Council will fund any remaining shortfall from its general reserves, although it will look to recoup such expenditure over the next few years.

The Council's architect for this project, Ruth Butler, will monitor the work to ensure it keeps on track. We expect the construction to be completed by the end of June. The outside of the building will also be 'refreshed', and sports clubs users have promised voluntary labour to undertake a refurbishment of the existing Pavilion interior once the

# Local Council News

extension work is complete.

We were sorry to learn of the death of C Cllr John West, who represented Petersfield Butser Division (including Finchdean). He was a regular attendee and participant in our Parish Council meetings, and was very 'hands-on' in his support for the residents of Finchdean. The Council was represented at his funeral service in Petersfield, which was a most uplifting occasion.

2014 sees both the Centenary of the outbreak of World War I and also the 70th Anniversary of D-day, in both of which this area and its residents were significantly involved. While it is not the role of the Parish Council to organise appropriate commemorations, the Council is pleased to do what it can to encourage and facilitate such events. We hope there will be soon be information on the activities planned.

We wish a very Happy Birthday to the Parish Hall, which we understand will be celebrated particularly on Saturday 31 May. The Hall is an important asset to our Parish and we are pleased to see it well used. Over the past 4 or 5 years, significant steps have been taken to renovate the Hall and improve its facilities. Our thanks go to Kath Molloy and all those who have worked effectively to bring this about.

The Millennium Clock on the tower at the Church on the Green is now working reliably and illuminated. We owe special thanks to RC Good Neighbours for a generous contribution towards the costs of that work.

On a very wet and windy Friday night in January, some 50 people assembled at the Parish Hall to engage in an extensive Question and Answer session with George Hollingbery MP. The topics covered were wide-ranging, with frank responses by our MP. As it was not a party-political event, the Parish Council was pleased to be associated with its organisation. The evening gave clear indication that we are an active and involved community. Long may that continue!

We are pleased that the Rev Trevor Filtness has now been licensed as Priest-in-Charge of St John's Church. He has been 'looking after' the Church for the last 2 years so knows our Parish already. The Council is grateful to have in Trevor someone who is committed to involving the local Church in the local community. Ken White has now retired from his post as Presiding Elder of the Church on the Green. We thank him for the contribution he has made over the years, and offer our good wishes to those who have taken over his responsibilities.

When the Council tax notifications arrive, you will see that the Parish Council's share of the precept is once again being kept at more or less the same level for the third year running. This has been achieved by setting clear priorities and adopting a keen sense of economy in all our activities.

Finally, a date for your diaries. The Annual Parish Meeting will be held on Monday 28 April 2014 at 7pm in the Parish Hall, and provides an opportunity to receive reports on Parish activities during the past year. Our invited speaker will be Julie James from HCC's Emergency Planning Dept, who has been a strong support and adviser to this Parish on a number of matters in recent years.

# Local Council News

## Contact Details

### Rowlands Castle Parish Council

11 The Green Rowlands castle PO9 6BW

Telephone 02392413044

Email: [parish.rowlands@btinternet.com](mailto:parish.rowlands@btinternet.com)

Website [www.rowlandscastlepc.org.uk](http://www.rowlandscastlepc.org.uk)

### Others

Highways (roads/pavements, flooding/drains, street lighting, overgrown vegetation etc)

HCC Contact Centre: 0845 603 5633

Report on-line at: [www.hants.gov.uk/roadproblems](http://www.hants.gov.uk/roadproblems)

Rights of Way (footpaths, bridleways etc)

HCC Contact Centre: 0845 603 5636

Report on-line at: [www.hants.gov.uk/rh/row/problem-report.html](http://www.hants.gov.uk/rh/row/problem-report.html)

East Hampshire District Council (waste collection, planning matters, environment)

Main Switchboard: 01730 266551

Website Home Page: [www.easthants.gov.uk](http://www.easthants.gov.uk)



# Ashley Electricians

Dalkieth, Woodmancote Lane, Woodmancote,  
West Sussex PO10 8RD

- Local reliable electrician.
- All electrical work undertaken from sockets to rewires.
- Free visual safety checks & estimates.
- Fully insured & Part 'P' registered.
- Member of Trading Standards 'Buy with Confidence' Scheme.

Contact Ed Ashley on 01243 373195 or 07733 467536

[ejashley@tiscali.co.uk](mailto:ejashley@tiscali.co.uk)

[www.checkatrade.com/ashleyelectricians](http://www.checkatrade.com/ashleyelectricians)

**Checkatrade.com**  
Where reputation matters



## Compton Pre-school

**Where:** The Parish Rooms, Compton, PO18 9HA

**When:** Mondays, Tuesdays, Wednesdays, Thursdays, Fridays from 8:30am-4:30pm term time only

**Who:** Children aged 2 - 5 years. Toddlers under 2 with an adult are welcome to join us at any time.

If we are not in the Parish rooms you will find us .....

- In our sheltered walled garden tending our crops
- Harvesting our vegetables ready for our cooking lesson
- Having a snack on the neighbour's lawn
- Exploring the woods and collecting sticks
- Whizzing around on bikes in the playground at Compton & Up Marden CE School
- Enjoying the play equipment at the recreation ground
- Or just having FUN in our stunning surrounding villages

Come for a free taster session...join us learning as we play....but don't forget to bring your waterproofs and wellies!!!

**All enquiries to Joy Stickley: 02392 631 497 / 249**

**[www.comptonpre-school.co.uk](http://www.comptonpre-school.co.uk)**

# MARTIN STEELS LTD

OPTOMETRIST & CONTACT LENS PRACTITIONER

[www.martinsteels.com](http://www.martinsteels.com)



## Opening Hours

Monday – Friday 9am – 5.30pm

Saturday 9am – 1pm We now  
have CUSTOMER PARKING!

## FULL EYE EXAMINATION

Including Glaucoma Screening,  
Digital Retinal Imaging, specialist advice on  
the latest lens design

Optical Coherence Tomography (O.C.T)

Affordable and Designer Eyewear

NHS sight tests for eligible clients

Competitive prices on all frames

Contact lens fitting and handling

(For full details see our website)



**4 THE OLD FLOUR MILL, EMSWORTH,**

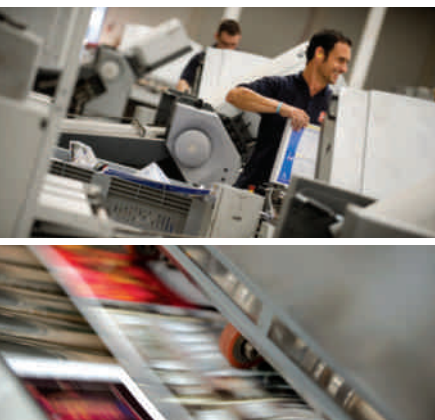
**PO10 7BT TEL: (01243) 375141**



# Print. Perfected

As the South's largest commercial printer,  
we handle all your print needs:

**Programmes • Brochures • Folders • Catalogues  
Stationery • Flyers and much much more...**



**DELIVERIES ON TIME EVERY TIME.  
QUALITY GUARANTEED.**



Follow us on Twitter for up to the minute news,  
print tips and last minute offers.

*Large enough to cope, small enough to care*

T: 023 9233 4900  
enquiries@bishops.co.uk  
**www.bishops.co.uk**



**Print. Perfected**



## Inspiring gardens.... from concept to completion

*Landscaping • Bespoke Designed Gardens • Planting*



*Extending your home into your garden*

**FREE CONSULTATION AND QUOTATION**

**Tel: 02392 413865 Mobile: 07767 867603**

office@charlesworthoutside.co.uk www.charlesworthoutside.co.uk



### **HEATING • PLUMBING • BATHROOMS**

I can help with all your boiler, heating, plumbing and bathroom needs.  
And I live right here in the village, so can call round at short notice.

**Here's my number.  
Please keep it in a  
safe place.**

# 07905 908143



**City & Guilds**  
Qualified





# DITCHAM PARK SCHOOL

*Where every child is known and valued*

A co-educational, independent day school for children aged 4-16 years  
near Petersfield, Hampshire

- Caring family atmosphere.
- Small classes and individual attention.
- Impressive GCSE results.
- Wide range of extra-curricular activities, especially in music and sport.
- Outstanding location with excellent facilities including a superb sports hall



For further information please  
contact the school office

📞 **01730 825659**

**[www.ditchampark.com](http://www.ditchampark.com)**  
**[admissions@ditchampark.com](mailto:admissions@ditchampark.com)**



# fabulous flooring with a perfect fit!



visit our website to find out more... [waterloovillecarpets.co.uk](http://waterloovillecarpets.co.uk)

Service is the secret of satisfied customers and satisfied customers are the secret of our 45 year success.

- Fabulous Carpets from Greendale & Brintons
- Crucial Trading Specialist - Wool & Natural Flooring
- Fabulous Vinyl Tiles from Amtico, Karndean & Vusta Planks
- New Click Only Vinyl Tiles & Planks from Victoria Luxury Flooring
- Fabulous Pergo Laminate Floors with New Designs
- Oak Floors – Engineered Planks & Solid Click
- Fabulous Bamboo, Cork & Rubber Flooring
- 12 MONTHS INTEREST FREE CREDIT on all products



We promise you a flooring that fits your requirements, fits your budget and fits beautifully into your home. Please call in, anytime.

## A pleasure to come home to.....

31 The Square, Petersfield, Hampshire Telephone: 01730 262223/267381 Fax: 01730 267394  
email: [sales@waterloovillecarpets.co.uk](mailto:sales@waterloovillecarpets.co.uk) [waterloovillecarpets.co.uk](http://waterloovillecarpets.co.uk)

## Gentle Touch cst

**Louise Toone** BCST RCST



***Have you thought about trying  
Craniosacral Therapy?***

***It's a gentle and safe, clinical  
treatment that can help you get  
better, faster.***

The therapy is especially suitable for helping:-

- Headaches and Migraine
- Low energy states
- Emotional Overwhelm
- Stress Symptoms
- Back and neck conditions
- Insomnia
- Recovery from Surgery
- Asthma
- Post-traumatic Shock
- Arthritis

**Convenient appointment times in Rowlands Castle**

**or at The Botley Clinic. Call Louise on 02392 413278**

**[www.gentletouchcst.com](http://www.gentletouchcst.com)**

## Open Morning at Portsmouth High School

**Saturday 5 October 9.30 to 12.30**

[www.portsmouthhigh.co.uk](http://www.portsmouthhigh.co.uk)



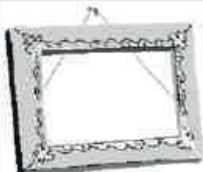
**Portsmouth  
High School**

An independent school for girls from  
Nursery to Sixth Form educating girls  
for the challenges of the 21st Century

023 9282 6714  
[admissions@por.gdst.net](mailto:admissions@por.gdst.net)  
Part of the GDST network of schools

**Specialists in educating girls**





## Petersfield Framing Studios

**Picture Framing by  
Andy Parks, MA, G.C.F.**

- ◆ Collection and Delivery Service in the Rowlands Castle area.
- ◆ Guild Commended Framer (G.C.F.) with 23 years experience.
- ◆ Over 400 different mouldings and 200 mount boards to choose from.
- ◆ Very competitive prices.
- ◆ Picture framing tuition also available.
- ◆ Tel: 01730 269926.
- ◆ Visit: [www.petersfieldframing.co.uk](http://www.petersfieldframing.co.uk)

***"We Collect and Deliver Your  
Picture Framing"***

**microsomma**



**IT Support for Home  
& Small Business**

**[www.microsomma.com](http://www.microsomma.com)**

**Please see my website for local  
recommendations...**

**Reliable & Local**

**Available 7 Days**

**Qualified & Experienced**

**0845 0170772**

**07796 346526**

**[david@microsomma.com](mailto:david@microsomma.com)**



**Where play and learning fit together**

Registration Charity Number 1088132  
Rowlands Castle St Johns CEC Primary School  
Whichers Gate Road, Rowlands Castle,  
Hampshire PO9 6BB

For children aged 2-5 years

OPENING TIMES: Monday to Fridays 8.30am ~ 4.30pm

Ofsted inspected

Early Years Foundation Stage curriculum

For a prospectus, or to arrange an informal chat, please drop in or contact:

LORRAINE BRYANT ~ Manager on 023 9241 2095

**St. Johns CEC Primary School**



**QUALITY PLAYSCHOOL WITH AFFORDABLE FEES**

'A'

## **ELIZABETH TURNER**

### **PROFESSIONAL**

### **CURTAIN MAKER**

CURTAINS, BLINDS OF ALL TYPES, PELMETS  
AND VALANCES, CUSHIONS ETC.

TRACKS, POLES AND

FITTING SERVICE

FABRICS, TRIMMINGS

FOR FREE ESTIMATE WITH EFFICIENT AND  
FRIENDLY SERVICE

TELEPHONE / FAX 01243 389939

### **PROFESSIONAL PLUMBING & HEATING SPECIALISTS**

## ***A. A. BARRETT***

51 Hatchmore Road  
Denmead  
Waterlooville  
PO7 6TE

Tel: 023 92258057  
Mobile: 07802321269

### **Why not advertise here?**

Local businesses are welcome to advertise  
in RCA Village Magazine.

It's low cost and your advert will be seen  
by every household in

Rowlands Castle, Finchdean and the sur-  
rounding area.

For more information contact

**Prue Amner**

**Advertisement Manager**

RCA Village Magazine

Email: [adverts@rowlandscastle.com](mailto:adverts@rowlandscastle.com)

or phone Tel 023 9241 2459



## **R&J PLASTERING**

- free estimates
- 25yrs experience
- plastering
- insurance repairs
- floors screeding
- rendering
- coving
- pebble dashing
- general building work

4 Bowes Hill, Rowlands Castle,  
Hampshire. PO9 6BP

07958-285409 02392 413285

[R.jmplastering@hotmail.com](mailto:R.jmplastering@hotmail.com)

## **BALANCE FIT**



Personal Training:

to meet your personal needs.

Cardio, toning, postural and  
rehabilitation exercises.

Pilates and Stretching.

**BOOT CAMP CLASSES AT ROWLANDS CASTLE.**

**Also available SPORTS MASSAGE**

For more info contact: STACEY BSc, Reps Level 3

07957 215459 / [merrittstacey@hotmail.com](mailto:merrittstacey@hotmail.com)



www.vintagefolly.co.uk

Elegant Mirrors  
Beautiful Beds  
& Linen

❖  
Vintage Folly  
Oakham Farm, Church Ln  
Oving, PO20 2BT  
01243 776811

## MORRIS BUILDING SERVICES

Shaun Morris

113 Finchdean Road, Rowlands Castle, Hants, PO9 6EN

RENOVATIONS  
ALTERATIONS  
SMALL WORKS

ALL ASPECTS OF PROPERTY MAINTENANCE AND  
REPAIRS, INTERNAL AND EXTERNAL

ROWLANDS CASTLE  
(023) 9241 3130

FREE ESTIMATES  
07941 742598



- Do you have Arthritis?
- Do you feel stiff and in pain?
- Would you like better strength, mobility, posture and balance?
- Do you want to improve your fitness?
- Would you like to feel better and have more energy?
- Would you like to meet other people with arthritis and have fun?

**Then come and try a FREE Taster Class**

Local exercise classes to suit your needs run by Chartered Physiotherapist Juliette O'Hea For more details call Juliette 02392 413885 or 07974 238787. Email: physio@arthritisfirst.co.uk



# S.Roberts Upholsterers

## Professional Upholstery

Contract & Domestic Any size of work undertaken

We provide a free measuring and quotation service.

Find us on [CheckATrade.com](#)

Call on 01243 377200 for all your Upholstery requirements.

email: [srulimited@hotmail.com](mailto:srulimited@hotmail.com)  
[www.re-upholster.co.uk](http://www.re-upholster.co.uk)



Proud members of  
**Checkatrade.com**  
Where reputation matters



S Roberts Upholsterers Ltd  
Unit 10, Palmers Road  
Industrial Estate  
Emsworth  
PO10 7DL



# Burchett Decorators

- Domestic, Commercial & Insurance Work
- 22 Years Experience
- All Types of Decorating including Wallpapering, Coving & Carpentry
- Fully Insured
- Clean, Tidy & Friendly Service

Ring for FREE Estimate  
or Just Helpful Advice

**07866 691 984**  
**023 9241 3548**

Email: [Burchett.davis@btinternet.com](mailto:Burchett.davis@btinternet.com)

Keith was friendly, reliable and worked exactly as he promised to, neat, tidy and very personable

Customer, Stedham, 2012

**Checkatrade.com**  
Where reputation matters



Member for 8 years

Burchett Decorators, Finchdean, Nr. Rowlands Castle, Hampshire



## BUILDING CONTRACTORS

COMMERCIAL, INDUSTRIAL and  
MAJOR DOMESTIC WORKS

Joinery Mill, The Green, Rowlands Castle,  
Hampshire. PO9 6BW

Tel 023 9241 2741  
[www.winnicott.co.uk](http://www.winnicott.co.uk)

*Established*  
**1904**

Fax 023 9241 2212  
[mail@winnicott.co.uk](mailto:mail@winnicott.co.uk)



**Austens**

**Petworth**

Tel: 01798 342104

**Billingshurst**

Tel: 01403 782963

**Midhurst**

Tel: 01730 815979

**Alton**

Tel: 01420 85115

**Emsworth**

Tel: 01243 376852

**Romsey**

Tel: 01794 512141

**Rowlands Castle**

Tel: 02392 412332

**homehardware**

**Not just paint!**

**WE COVER EVERYTHING!**

- ✓ GREAT SAVINGS ON MANY RANGES
- ✓ FRIENDLY EXPERIENCED STAFF
- ✓ **OPEN SUNDAYS**

**ICI Dulux**  
PAINT MIXING CENTRES



[www.rowlandshomehardware.co.uk](http://www.rowlandshomehardware.co.uk)



# CHILDRENS LEARNING CENTRE

**RATED OUTSTANDING BY OFSTED 2011**

Member of; 4Children

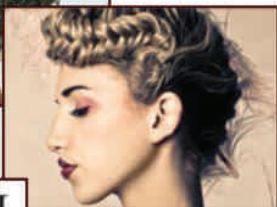
125 New Brighton Road, Emsworth

**EDUCATIONAL NURSERY AND DAY CARE SERVICES**

**OPEN 50 WEEKS A YEAR 8.00AM - 6.00PM**

We offer full time and term time care for children from 0 – 5 years, hours and days to suit your requirements. Also we provide holiday activities for children 3 – 5, school age children – 12 years and an after school club

Telephone: 01243 372015 or email: [childrenslc@btconnect.com](mailto:childrenslc@btconnect.com)



**02392 412 606**



[info@stylestudio-rowlandscastle.co.uk](mailto:info@stylestudio-rowlandscastle.co.uk)

## **Your local Hair and Beauty Salon**

Recommended by The Good Salon Guide, we're situated in the heart of Rowlands Castle.

Offering a professional portfolio of hair and beauty treatments by a team of experienced hairdressers and beauticians.

- Hair for ladies and gents
- Beauty
- Special packages
- Late appointments available by request

**Contact us:** 3 Links Lane, Rowlands Castle, Hampshire, PO9 6AD

**Find us online:** [stylestudio-rowlandscastle.co.uk](http://stylestudio-rowlandscastle.co.uk)



**Extra Mech  
(Services) Ltd.**

**YOUR VILLAGE PLANT HIRE  
COMPANY SUPPLYING A FULL  
RANGE OF GENERAL PLANT**

**SEE OUR VAST RANGE  
ON OUR WEBSITE  
[WWW.EXTRAMECHSERVICES.CO.UK](http://WWW.EXTRAMECHSERVICES.CO.UK)**

**OR  
CALL AND DISCUSS ON  
023 92 412888**



**Richard C Arnold**

Optometrists & Contact Lens Practitioners

Est 1890.

# Eye Care & Eye Wear

極度乾燥(しなさい)  
**Superdry.**

**GUCCI**

SERENGETI  
EYEWEAR 

**EMILIO PUCCI**

**GIORGIO ARMANI**

**MICHAEL KORS**

**bollé**

**FENDI**

**Dior**

**IVF**  
DESIGNED AND PRODUCED IN ITALY

  
**adidas**

*Ray-Ban*

*Mavi Jim*

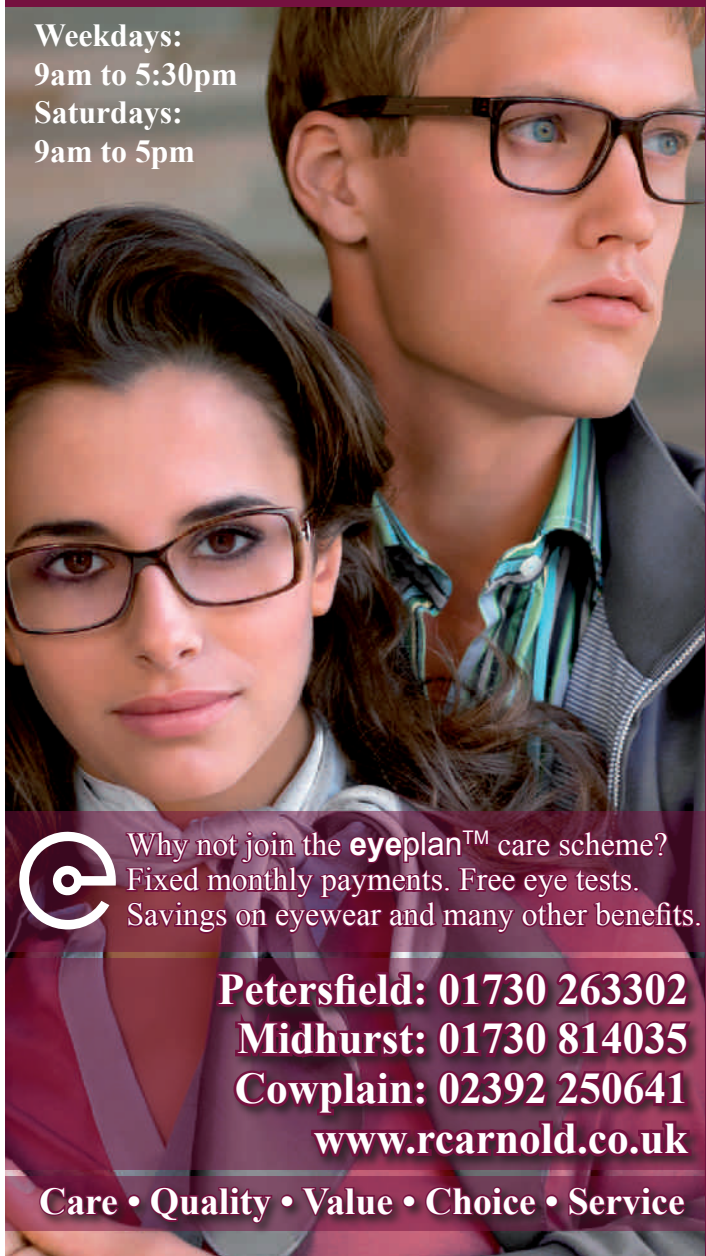
**uvex**

**Weekdays:**

**9am to 5:30pm**

**Saturdays:**

**9am to 5pm**



Why not join the **eyeplan™** care scheme?  
Fixed monthly payments. Free eye tests.  
Savings on eyewear and many other benefits.

**Petersfield: 01730 263302**

**Midhurst: 01730 814035**

**Cowplain: 02392 250641**

**[www.rcarnold.co.uk](http://www.rcarnold.co.uk)**

**Care • Quality • Value • Choice • Service**

**Richard C Arnold  
Optometrists**



## Legal Advice You Can Trust

George Ide LLP Solicitors has a well established and highly regarded private client department which deals with all aspects of Wills, Probate, Trusts, Court of Protection and Powers of Attorney.

### **We can advise you on:**

- The preparation of a Will
- Obtaining Probate
- Executor Responsibilities
- Investment Advice
- Post Death Variations
- Inheritance Tax Planning
- Trusts
- Lasting Powers of Attorney
- Court of Protection Issues

The breadth and depth of the expertise of our team is such that we offer private individuals and families a tailor made personal service of the highest quality.

We provide specialist advice to manage the personal affairs of individuals at every stage of their life. Our experienced Solicitors have a sound understanding of the issues, which can affect your personal wealth and family relationships and will take all of the necessary steps to protect your interests every step of the way.

Contact Ian Oliver on: 01243 812421

[ian.oliver@georgeide.co.uk](mailto:ian.oliver@georgeide.co.uk)

[www.georgeide.co.uk](http://www.georgeide.co.uk)

On your side



## Bathrooms that reflect your dreams and aspirations...






As Spring approaches, we can look forward to lighter and warmer days, a great opportunity to spring clean your bathroom. Whatever your vision, Aqua Bathrooms can help you create the perfect bathing sanctuary for all the family.

We can transform virtually any space into a place of tranquillity where you can relax, unwind and revive your senses. From bespoke design, installation, tiling and decorating, our professional and dedicated team will take care of everything with exquisite attention to detail.

A bathing space is one of the most important and used areas within your home. It needs to be well designed, comfortable and functional. We offer a wide range of products from the finest designers and manufacturers.

Our extensively stocked show room will allow you to browse whilst our helpful and friendly staff are always on hand to offer advice and assistance.

**Your personal invitation** - book a free, no obligation design consultation or visit our showroom.

-  **Fully Fitted Showroom**
-  **Free Design Service**
-  **Detailed Quotation**
-  **In-house fitters**
-  **Peace of mind**



We look forward to welcoming you...

**T: 02392 466007**

**E: [enquiries@aqua-ltd.co.uk](mailto:enquiries@aqua-ltd.co.uk)**

**[www.aqua-ltd.co.uk](http://www.aqua-ltd.co.uk)**

