

Rowland Castle Association

Spring 2013

Village Magazine

www.rowlandscastle.com

Your dream... Our creation



Chantry House Oak have been Designers and makers of quality furniture, joinery and Oak frame structures since 1999. We have produced many solid oak and painted kitchens, fitted wardrobes and studies. Garden structures, summer houses, gates and car ports are among the many items that we have been producing from our Oving workshops over the past years. Visit our Workshop and showroom or email your enquiry for a no obligation quote.

Chantry House Oak

Oakham Farm, Church Lane, Oving, West Sussex PO20 2BT

Telephone: **01243 776811**

www.chantryhouseoak.co.uk shop@chantryhouseoak.co.uk



Village Magazine Spring 2013

RCA Chair's Report	4-5
Thoughts on the New Year	6
Flooding	7-9
Outdoor Gym	10
Landscape Character assessment... ..	11
RCA, the early days	12-13
Havant Thicket	14-15
Shipwrights Way	16-17
WRAGS	18
RCA Children's Christmas Party	19
Village Montessori School	20
St John's School	22-23
Women's Institute	24-25
Horndean Music Society... ..	26
Painting Society	27
Tennis Club	28
Photography Club	29
Parish Hall Lottery	30
Castle United FC	31-32
St John's Church	34
The Church on the Green	35
Domestic heating news	36
County Council News	37-38
Constituency News	40-41
Parish Council News	42-44
Quiz news	45

The Village Magazine is published three times a year by the RCA. The aims of the RCA are to act as a channel of communication for the Village, to conserve the character of the Village and to enhance the life of the Village.

Editor: Kevin Connell , 19 Mallard Road, Rowlands Castle, PO9 6HN
Tel: 02392 413857 email: editor@rowlandscastle.com

Cover picture: Spring in Rowlands Castle
Photo: Pat Carter

Rowlands Castle Association

Chair bids farewell to the RCA

by Catherine Billam, Chair, RCA

This is my farewell article as Chair of the RCA. We have a very sensible rule that ensures that no-one stays on the committee for too long, so I am now handing over the reins to Richard Milton as incoming Chair. I've thoroughly enjoyed being on the RCA committee. I've made great friends and I feel that we have added to the life of the village. Although many things have changed since the RCA was formed in 1972, our aims have not. They are to: conserve the character of Rowlands Castle; to provide a channel of communication on matters of local interest and to enhance the life of the village.

The RCA started out opposing a major planning application and continues to keep informed on planning issues. One of the biggest issues facing the village at the moment is the Keydell planning application. The Parish Council has started a fund to provide legal representation to oppose the application, and I'm pleased to say the RCA will be donating £1,000 to the fund.

We provide some of the major channels of communication for the village. These include this magazine, the website rowlandscastle.com and the Village Grapevine email list. Did you know that we also host mailing lists for other village organisations? If you would like a way of communicating with all the members of your group, do contact us to find out how we can help you.

We enhance the life of the village through activities we organise. For many years we have run the bonfire and fireworks display for bonfire night. This brings people together from throughout the village and beyond. I like to think of building the bonfire as our version of barn raising – a chance for everyone to pitch in to build an impressive edifice.

We also run the children's Christmas party and for the last few years we have had an RCA quiz night courtesy of quizmasters Sue and Kevin Connell. Not forgetting the RCA's fortieth party last year. I think it's fair to say we have set the bar high for whoever organises the party for the RCA's fiftieth.

We also help other organisations to enhance the life of the village, by giving donations and a helping hand. For instance, the Royal Wedding street parties and the Diamond Jubilee celebrations.

I can't claim credit for all the things we do – we are a committee and it is a team effort. It is, however, enjoyable effort. We meet about 10 times a year in each other's houses, where we drink wine, eat nibbles, have a laugh and make things happen. If you are interested in joining the committee, do contact Richard Milton on 023 9241 3292 or chair@rowlandscastle.com.

I hope that the committee going forward enjoy their time serving the people of Rowlands Castle, Finchdean, Dean Lane End, Forestside and Idsworth as much as I have.

Rowlands Castle Association

Your RCA Committee



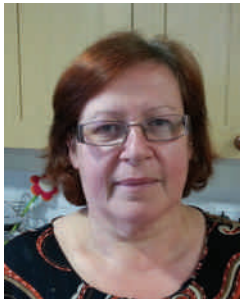
Richard Milton (Chair)
9241 3292
chair@rowlandscastle.com



Kevin Connell (Editor)
9241 3857
editor@rowlandscastle.com



Sue Connell (Secretary)
9241 3857
secretary@rowlandscastle.com



Sharon Broom (Treasurer)
9241 3592



Martha Dombey
9241 0030



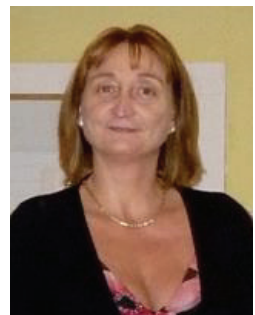
Fiona Charlesworth
9241 3865



Mike Winn
9241 2704



Gillian Lovegrove (Webmaster)
9241 2426
webmaster@rowlandscastle.com



Sue Morrison
9241 3292

Thoughts on the new year

by Kevin Connell

We are sorry to see Catherine Billam, not only step down as Chairman of the RCA, but leave the RCA committee altogether. Catherine has been an energetic chairman leading a number of unique events through the year. She represented the RCA on the Jubilee committee playing a full part in the organisation of the events of the Jubilee weekend and the follow on activities. She had the challenging job of organising the RCA's 40th Anniversary celebrations. The rest of the committee would like to say a huge thank you to her. We now move on with a new chairman, Richard Milton. You will remember that Richard is the former editor of the magazine using his skills as a professional journalist to produce a product of the highest quality. The RCA is in safe hands.

I reported in the last issue that the Keydell planning application had been rejected by the East Hants District Council. Keydell has appealed against the decision. This means there will have to be a formal Inquiry conducted by a Planning Inspector, to be held at St John's Church Hall, Redhill Road, Rowlands Castle, starting Tuesday 30 April. The Inquiry is likely to last 2 or 3 days. It is expected that EHDC will vigorously defend its decision to reject the application at the Inquiry. However, the grounds on which EHDC can argue are restricted to those on which it refused the application, namely landscape issues. So Rowlands Castle Parish Council has decided also to argue against the appeal, a decision that we whole-heartedly support..

The Parish Council is bringing in a barrister with expertise in the planning laws to help them present their case and hopefully prevent this development. The original decision did not consider issues such as the impact of what will effectively be a supermarket (with emphasis on gardening supplies) on local businesses. Also the impact on road traffic, especially heavy lorries on a very narrow road, was not fully considered in the original application.

The RCA was founded 40 years ago to make sure that villagers' wishes were heard and fully considered particularly in respect of planning issues. Rowlands Castle was threatened by the addition of 5,000 houses back then, something which would have turned the village into a suburb of Havant.

The RCA have decided that, as this issue is core to the reason for its existence, it will provide £1,000 to the Parish Council to help with legal fees. The Parish Council would be very pleased to hear from any individuals who would also like to contribute to the fighting fund.

Flooding hits Rowlands Castle and surrounds by Kevin Connell

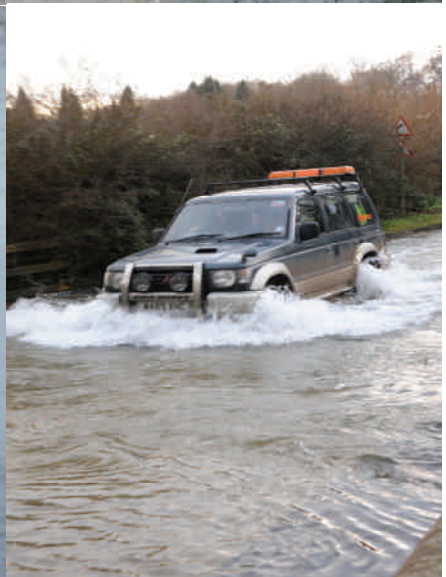
It has been one of the wettest years on record and Rowlands Castle and surrounding areas have not escaped the consequences. We are fortunate that the Parish Council had been proactive in developing its emergency response team. Indeed local MP George Hollingberry was full of praise citing the arrangements as best practice. At the time of writing Woodberry Lane is still closed due to the high level of water in the Lavant passing across the ford. Below is a selection of photographs of flooding in the local area taken by Photography Club members Steve Radcliffe, Fiona Charlesworth and Pat Carter.



Flooding



Flooding



Outdoor Gym

Outdoor Gym for the Recreation Ground

By Janet Croker

For the past year the Village Fare Committee in conjunction with the Parish Council have been raising funds for an Outdoor Gym to be installed on the Recreation Ground.

It is designed to cover a wide age range from 13years upwards. All pieces of equipment can be shared by two people, so friends can exercise and get fit together. Our local Personal Trainer, Stacey, has advised us on the selection of equipment that will give a variety of different exercises to cover cardiovascular, strength, stability, flexibility and stamina. The equipment can be used by up to 14 people at any one time, which would be ideal for any group.

All pieces of equipment come complete with safety and user instructions and the clever design makes it safe for any age to use as resistance is provided by the users own body weight.

We have raised a grand total of £12000, this has come from various bodies; Village Fare Committee have given £8000 towards the gym equipment and also have bought an Outdoor Table Tennis Table, unfortunately the weather has been against installation,

Rowlands Castle Association have given a generous £1500

Councillor Sam Durragh has also contributed £1500

EHDC have donated £1000

Thank you for your contributions, this has enabled us to purchase a good selection of exercise equipment for everyone to use and enjoy.

Hopefully all this will be ready for use by the Easter holidays, weather permitting. A special launch is planned, and the date will be widely advertised, all will be welcome to come along and try out the equipment.

It's fun to exercise and it's FREE.



Landscape Character Assessment

Rowlands Castle Parish Local Landscape Character Assessment available

by Chris White (LLCA group coordinator)

The Local Landscape Character Assessment (LLCA) is now available, having been adopted by the Parish Council at the October 2012 full council meeting. You can access the LLCA online in the document archive of the Rowlands Castle Parish Council website (http://www.rowlandscastlepc.org.uk/docs_publications/) or from the Village Design section of the RCA website (<http://www.rowlandscastle.com/VillageDsgn/VillageDsgn.htm>). The latter site also has a higher resolution copy available should you wish to print a copy.

Following much discussion we decided not to distribute a printed copy to every household in the parish. Many, probably most, residents can now access the document online; the cost of printing a copy for every household was in the order of £2500 and we felt that, in times of limited public funding, this money could be better used elsewhere in the parish. However a very limited number of printed copies have been produced for residents who do not have Internet access and, if you wish to have a printed copy, it may be obtained on request from the parish council office.

So, this is the final article regarding the parish LLCA. Now completed it will form a part of community led planning providing a way for local people to voice and organise their views collectively to planning and regulatory authorities. LLCAs describe what communities value, what are the landscape's special qualities, and enable them to have a say in how the character can be conserved and enhanced by identifying opportunities and issues to best manage change.

Finally I would like to take this opportunity to thank all the residents who supported this project with their time, comments, information, or just encouragement. Your comment and input was vital to the success of the project and was much appreciated.



Photo: Pat Carter

RCA 40th Anniversary

The RCA, the early days

by Kevin Connell

The Spring edition of the RCA Newsletter was published in February 1973. It had 16 pages of content, an increase of four pages over the first edition.

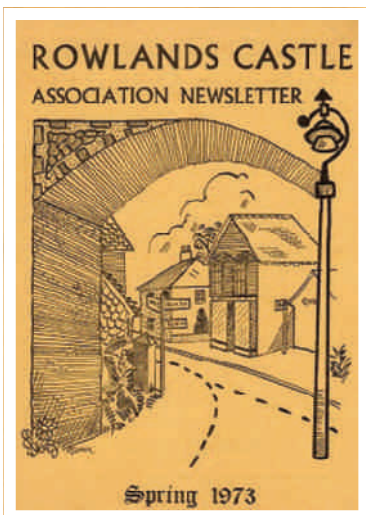
The membership fee for the RCA had been 25p but the issue announced a special discount for Senior Citizens down to 5p. The committee had grown to nine members the same number as spring 2013.

The RCA was examining its role in the village. It was clear that the main thrust was to oppose development which would threaten the character of the village but how exactly should it do this? What sort of relationships needed to be developed with Parish, District and County Councils? Beyond this, what sort of functions should the RCA perform? The plan was to have Open meetings and find out from villagers exactly what should be the purpose of the RCA and how can it be achieved. The existing RCA constitution still reflects the ideas put forward in these early meetings. The Spring 1973 edition contained a number of articles and letters putting forward suggestions for the role of the RCA in order to stimulate the debate.

One suggestion was an ambitious plan to develop a 10 year village plan. Rather than simply react to the planners this would provide a village view at the front end of the planning process.

The Great Wellsworth Inquiry was reported on and was a great boost to the aims of the RCA. The Inspector warned against excessive development saying it would destroy the nature of Rowlands Castle turning it into an extension of the urban area. What was particularly rewarding was the fact that so many points put forward by the Village Action Group were included in the final report.

It was reported that the RCA had been asked to help organise a proposed May Fair. Cllr Sawyer wrote that it had not so far been possible to organise a combined village fete. In the interim he was looking for individual donations and one off events, such as dances, to raise funds for the children's playground on the recrea-

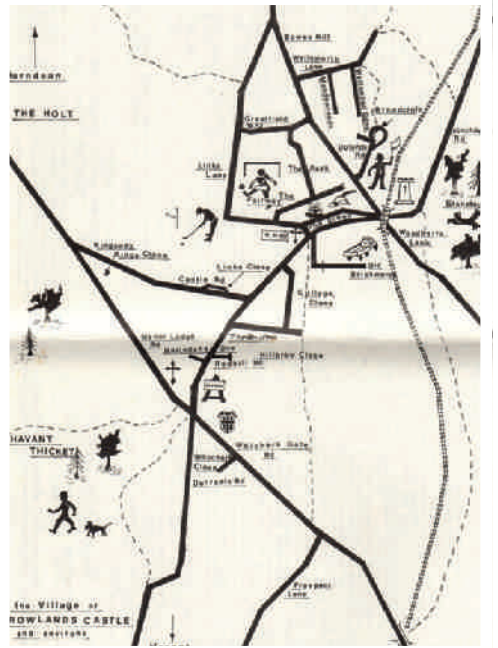


Spring 1973 Newsletter
cover

RCA 40th Anniversary

tion ground. The Village Fair has come a long way since then, now having its own organising committee completely separate from the RCA.

There was a view that the RCA should be concerned with surrounding area issues like the protection of the countryside. It was reported that the Forestry Commission had applied the herbicide 245T to destroy 'uneconomic' timber in Markwells Wood and Manor Copse. 245T was used in Agent Orange during the Vietnam war to destroy the forests in Vietnam to deny the Viet Cong cover. It is now a banned chemical in the UK. A further large area of the wood was felled for agriculture. The author was concerned at the silent destruc-



tion of ancient woodland and the loss of habitat for hundreds of species of plants and animals. It was proposed to set up a sub-committee to look into what could be done to halt this creeping destruction of the countryside.

The magazine had a handy map, origin unknown, which showed the main features of the village. It is interesting to compare this map with a modern one and see just how much development has gone on.

Finally what sort of activities were planned for the Spring of 1973? The Painting Society, Mothers' Club and Women's Institute were very active with a number of meetings and exhibitions planned. The Brownies had a waiting list for both packs. Guides, Good Companions, Badminton, Medau Rhythmic Movement and the Disco Club for young people were all going strong. It is good to see that so many of these groups are, forty years later, still with us.

Havant Thicket

Havant Thicket – The Missing Link Tracey Viney Portsmouth Water

There has always been a good network of gravel paths at Staunton Country Park in Leigh Park and at Havant Thicket near Rowlands Castle, but a good path to link the two sites was missing. Portsmouth Water have led a partnership project to provide a new linking path across their land at Havant Thicket, to open up a wider area of countryside for walking and cycling that can be used all year round.

The work has involved moving back fences to provide more space for the path, cutting back vegetation, clearing out an old ditch to improve water drainage, and constructing a 2.5m wide surfaced path. Additional work is planned by the Forestry Commission to further improve the surface of the path to the north. The work has been part funded by grants from Hampshire County Council, including grants from Councillors Sam Darragh and Ann Buckley. Cllr Buckley said; “I was delighted to support this project with a grant and would like to praise the team for all their work. This route on the edge of Leigh Park & Rowlands Castle will be well used by local residents and provides a great off road route for youngsters who are learning to cycle.”

Tim Speller from the Hampshire County Council Countryside Service explained that they are planning to improve signage from Staunton Country Park to Havant Thicket, including way marking a new circular cycle route. The plan is to get the new signs in place by the spring. Mike Ashton, a CTC cycle campaigner, emphasised that, "The Staunton Country Park and Havant Thicket link path project opens up 10km of

all weather off road cycling through attractive woodland and grassland. Safe



Before works commenced



*New link path from Staunton
Country Park to Havant
Thicket*

cycle access to the new route is available from Leigh Park, Cowplain and Rowlands Castle.”

Neville Smith the Managing Director for Portsmouth Water said; “We were very pleased to support and lead this project, which provides improved access to Havant Thicket. We hope that local residents will enjoy walking and cycling in the countryside using the new all weather path”

Simon James, Forestry Commission – Beat Forester , who is the manager of the Havant Thicket site said: “The Forestry Commission were delighted to be involved in this project to link our woodland in with the Country Park to provide wider recreation opportunities for dog walkers, cyclists and users of mobility scooters. It shows what can be achieved when several organisations get together. We hope to carry out further improvements in Havant Thicket during the coming year.”

The total cost of the project to date to move back the fence line, clear the vegetation, dig out the ditch and provide a 300m length of 2.5m surfaced path is £13,908.25 (£14,000). This includes the value of 5 lorry loads of recycled aggregate worth about £900 donated by Clancy Dowcra, who were working on a nearby building project for Portsmouth water and kindly agreed to donate the stone for the sub-base of the path.

As indicated above the Forestry Commission will shortly complete some further work on the connecting path to the north, which will cost about another £1400 and HCC will be providing improved signage.

Path opening ceremony 31 January 2013

Mike Ashton (CTC), Jim Edwards (Mobility Scooter), Simon James (Forestry Commission Manager), Sue Montilla (Hampshire Countryside Access Forum), HCC Cllr Sam Darragh, Tim Speller (Staunton CP Estate Manager), Neville Smith (Portsmouth Water Managing Director), Alison Berry (HCC Area Access Countryside Manager), EHDC Cllr Marjorie Harvey, Malcolm Johnson (Rowlands Castle Parish Council), Tracey Viney (Portsmouth Water Project Manager) and Robert Sibley (CTC).



Shipwrights Way

A new initiative

by Kevin Connell

The official Press relief for the Shipwrights Way tells us that: It's a new long-distance path which will link villages and towns in east Hampshire through some beautiful countryside. Starting in ancient woodland at Alice Holt Forest near Farnham, it will meander down through East Hampshire, across the South Downs and on to the sea at Portsmouth -around 60 miles in all, and including 7 rail stations. The route will be open to walkers and cyclists and, where possible, horse-riders and people with disabilities.

It is needed for 3 reasons:

- To provide an attractive, well-signed route for local people to explore and enjoy their countryside
- To support local businesses such as rural pubs and shops, cycle hire facilities and B&Bs
- To enable people from further away to enjoy this beautiful area in a sustainable way

The name reflects the journey of oak grown at Alice Holt to dockyards such as Portsmouth for medieval shipbuilding; the route will finish at Portsmouth Historic Dockyard, home of the Mary Rose and HMS Victory.

The project is a partnership between East Hampshire District Council, Hampshire County Council, the Forestry Commission and the South Downs National Park Authority.

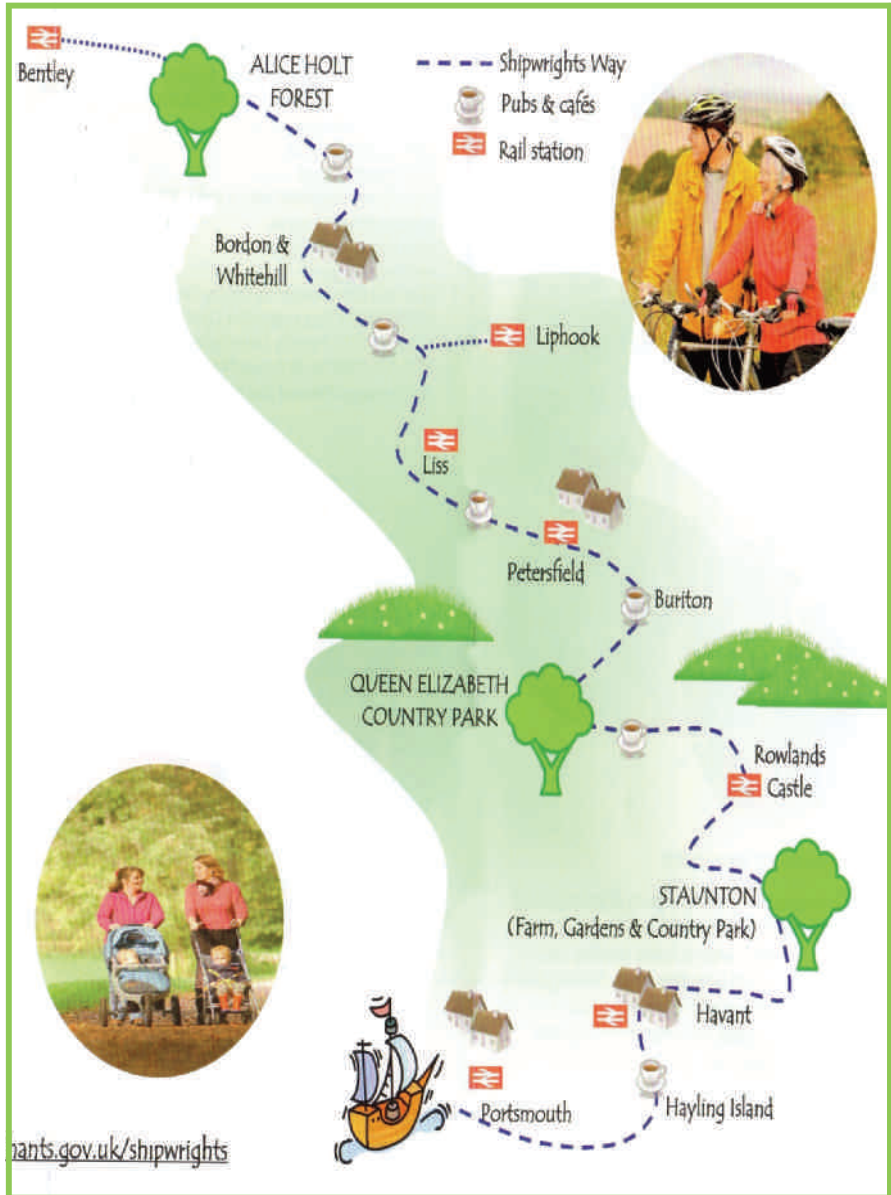
The first sections were opened in March 2011: 3 miles of path starting at Alice Holt Forest and 2 miles from Buriton into Queen Elizabeth Country Park. Other sections will open over the following 2 years and detailed maps will be available at www.hants.gov.uk/shipwrights

Shipwrights Way will have various pieces of objet d'art placed along its route. These will be crafted by well known artist Richard Perry. Richard has been holding meetings with local people to include them in the planning process and exploit any good ideas. The Rowlands Castle guides hosted a meeting at which an audience of around 20 watched a presentation and formed discussion groups.



Richard Perry presenting at the Rowlands Castle meeting

Shipwrights Way



Planned route of Shipwright's Way

Trainees wanted for horticultural training

Press Release

Returners to the workforce, looking to branch out in a new direction and who have a passion for gardening are offered opportunities in the local area.

The Women's Farm and Garden Association, a charity established in 1899, is looking for new recruits to its 'Women Returners to Amenity Gardening Scheme', otherwise known as WRAGS.

Liddy Davidson, Sussex and South Hants Coordinator who recently gave an enthusiastic talk to Rowlands Castle Gardening Club about the WFGA and WRAGS, is delighted to have new training placements available to offer local gardening enthusiasts. She explained that the 12-month scheme enables women and men to gain practical gardening skills working in a carefully sourced garden, under the guidance of a head gardener or experienced garden owner.

Liddy said: "This is a great opportunity to gain hands-on experience through each season in the garden from sowing seeds, propagating plants to raking leaves. You also discover how hardy you are on a freezing February morning, or a drizzly December day. But there are compensations, when the weather is beautiful you are the envy of everyone stuck in an office!"

The WFGA has more than 100 training gardens throughout the UK, which are a mixture of public and private gardens, gardens that open under the National Gardens Scheme, gardens under restoration and even royal gardens.

The commitment is for 15 hours a week for which a trainee will receive a training allowance of £5 per hour paid by the garden owner. Trainees come from many backgrounds but have to be members of the WFGA. The Association charges both the garden owner and trainee a registration fee to help with the costs of the scheme.

For more information contact the WFGA on 01285 658339, email admin@wfga.org.uk or visit www.wfga.org.uk



Hand barrowing in 1926



WRAGS trainee watering box of cuttings in a cold frame

RCA Children's Christmas Party

Magic Moments

by Sue Connell

What more could you ask for at a Xmas party designed for young children? A disco, lighting effects, a fantastic magician, balloon modelling, great party food, spot prizes, games, and of course, Santa himself carrying a huge sack of presents.

You can guarantee all of this at the RCA annual Children's Christmas Party, which took place last year on Sunday 16th December in St John's Church Hall. Children of the village, aged up to six years, were treated to fun and frolics, for the bargain price of just one pound. Mike Fairall, popularly known as Magic Mikey, entertained the children right from the start with his mixture of games, balloon modelling, and magic tricks. How does he make that table fly? The children were both captivated and enchanted, and the sound of joyous laughter filled the hall. Even the adults couldn't stop grinning.

After the magic show, the children went through to the adjoining hall for their party food and drinks, already prepared and festively laid out for them to enjoy. Then it was back to the other hall for a mini disco and games, again expertly supervised by Magic Mikey, until the eagerly anticipated arrival of Santa and his elf. Each child received a present from Santa's sack, which then brought the party to a close, with the children going home happy and contented.

Thanks must go to Mike Fairall for such masterful entertainment, Alan Ayers for taking on Santa again, and Ben Lucas for his role as the elf. Special thanks go to Nicci Lucas, who again masterminded and organised the Children's Christmas Party, with help from the RCA committee members.

This annual event is open to all young children of the village, and is a magical and enjoyable Christmas outing for them. Publicity and contact numbers for the 2013 party will be available nearer the time, so make sure you don't miss out!



Village Montessori Nursery School celebrates second anniversary by Miss Jenna

Our Nursery School is approaching its second anniversary and we will be celebrating with an Open Morning on Saturday 23rd March from 10 till 12, at Rowlands Castle Parish Hall. This will be open to anyone who would like to see how a Montessori classroom works and talk to staff about the ethos behind Maria Montessori's inspirational ideas.

In December 2012 the children performed their first Nativity play, making good use of the halls' stage. It was decorated with stars, some life size models of animals and a real bale of hay, kindly loaned to us, which really gave an authentic feel. The children looked wonderful dressed as Joseph, Mary, Shepherds, Kings, Angels and Snowflakes! The parents and guests thoroughly enjoyed the performance and the children have asked when they can go on the stage again. Some stars in the making perhaps!

Thanks to wonderful local and PTA support, our nursery continues to grow and flourish. At the end of the summer term we will see our first large group of children move on to primary schools around the area. We hope we have equipped them to be independent, confident and continually curious in exploring the world around them. We wish them all well and every success in their future endeavours.

For further information or enquiries regarding enrolment please contact Miss Jenna on mobile no 07825290124 or you can visit our website www.villagemontessori.co.uk



Rowlands Castle Diamond Jubilee Commemorative Photo book



Following the very successful celebrations of the Queen's Diamond Jubilee in the village, the organising committee have joined forces with the photographic club to create a photo book to remember the event.

The book will go on sale in the Village stores in the Autumn and the guide price is £5.00. All profits will go towards a permanent commemoration of the day in the village

To help gauge demand please register interest by sending an email to RCDiamondJubilee@gmail.com

Donations to the fund are still most welcome and if you would like to contribute please contact our treasurer Dreen Chestnutt at 22 The Fairway or on 02392 412754.

St John's School

Castle Clubs

By Kay Pennicotte-Henrie
Headteacher

Here at St. Johns we have a before school club which runs from 8am and extensive after school activities which run until 6pm. The activities range from sports to cookery classes and the children thoroughly enjoy learning new skills. We enter the local sport festivals and for a small school we do very well and have managed in the past to win competitions in netball, hockey and cricket.



Mrs Cornish is the Extended Schools Manager and is always trying new ideas out. The 'Toast Club' is a deliciously homely club. The children have the opportunity to chat, play and relax. We try and make it as comfortable and homely as possible. There is a definite family feel to this club. The teachers often sneak in for a piece of toast too.



Cookery club is one of the most popular groups and recipes made include pizzas, pies and puddings.

Sports clubs are always popular and Mr. Cole our P.E. leader runs an activity club on Mondays.

For further information regarding club provision here at St. Johns please look at the website.....

We are very proud of this superb facility available every day here at St. Johns and the children love it.



Rural Area Play Project (RAPP)

by Lisa Clements

Representatives of RAPP visited St John's School at the end of last summer with Cllr Harvey to help the children put together their time capsule and bury it in the grounds. Please see below information and attached photos and if I can be of any further assistance please do not hesitate to contact me on the contact details below.

The award winning Rural Areas Play Project (RAPP) from East Hampshire District Council runs around the East Hampshire area during the school holidays. RAPP has been running since 2006 and provides positive play opportunities to communities.

We visit Rowlands Castle at least twice a year and today was our third visit of the year with a very special twist. We have been getting children from around the area from as far up as Bentley to put together their memories of summer 2012. Today at St. John's Primary School with two school governors and local District Councillor Cllr Mrs Marge Harvey the children that attended added their special memories to our time capsule and buried it with kind permission from the school and we hope to get a small plaque to display in the school grounds.

Not to be opened until 2062 and 90 children's paces from where we buried it to the school playground everybody had a wonderful time. Included in the capsule is a few pairs of V.I.P knickers (very important pairs) that the children have been creating across the area as part of our on-going theme of The Queen's Knickers by Nicholas Allen. In Her Majesty's Diamond Jubilee year we have focused on bringing the children together and creating these knickers. A scrapbook of memories will be sent to Buckingham Palace to commemorate what the Children of East Hampshire have to say to the Queen. The icing on the cake being burying the time capsule in Rowlands Castle today .

For more information about RAPP contact Lisa Clements RAPP Coordinator at East Hampshire District Council on 01730 234384 email lisa.clements@easthants.gov.uk or find us on Facebook www.facebook.com/Rural.Play



Rowlands Castle Women's Institute

A good end to 2012 and start to 2013!

by Rona Musker, President, Women's Institute

We had a most enjoyable Christmas meeting when we indulged in mince pies and mulled wine and sang carols with our own self-selected choir leading us! Prior to that 4 members had worked really hard to create the most beautiful window for the Christmas Festival at St John's Church. And we had it illuminated on the Parish Hall stage during our January meeting which was much appreciated.

In early January we had a Welcome Evening for newer members to RCWI. The Committee were able to explain their individual roles in more detail and it was a pleasure to welcome Lynne Andrews who is not only our local Advisor but is also an Ambassador for Denman College which is the WI's centre for learning in the picturesque village of Marcham, near Oxford. There they teach cookery, craft and lifestyle on a wide range of day schools and residential courses. Everyone is welcome – men and women, members and non-members – so why not think about treating yourself sometime.



At the end of January we had our final push for our 2012/13 Good Cause which has been to fundraise for St John's School's outdoor learning facilities. We held a Coffee Morning in the Hall at the Church on the Green and raised £500 in an hour and a half! We were supported by lots of mums, toddlers and pushchairs and were delighted to welcome the 14

Rowland Castle Women's Institute

strong School Council, consisting of 2 children from each class year. I think that after 10 days of snow and ice, people suffering from “cabin fever” were happy to get out to support us. Following on from that event we were able to hand over a cheque for £1200 to the School at our March meeting.



Looking forward we have a visit to Ramster Gardens in April where they also have a wonderful embroidery exhibition every other year. And in August we are taking a coach load of members up to Bletchley Park where we will have a guided tour.



We're already thinking about the Village Fair and hoping to host some teas for walkers and other visitors during the spring and summer. If you know of interested parties do please get them to contact Elisabeth Hall (tel: 92412815).

Horndean Music Society

Local Musicians triumph at Horndean Music Society

by Irvin Draycott, Chairman

On Thursday, 7th February the fifth concert of the season was given at Blendworth Church Centre by the Monington Ensemble led by Cathy Mathews (violin) and supported by Jane Ingamells (violin), Ruth Mc Gibbon (viola), Nicola Heinrich (Cello) and Karen Kingsley (piano).

The first item on the programme was the seldom heard suite for solo piano, "Holiday for piano" by Benjamin Britten. Its four movements amply showed the composers' gift for creating atmosphere and Miss Kingsley's sensitive and accomplished musicianship evoked a perfect picture of holidays on the East coast which the composer would have known in the middle of the last century.

There followed the Haydn String Quartet in G Opus 54 No.1. This towering classical work, which seemed to be symphonic in its four movements, was given a masterly rendition by the strings. Their perfectly coordinated contributions gave a wonderful symmetry to this Haydn masterpiece and gave a performance much greater than the sum of their individual parts.

The final item on the programme was the Quintet in A minor by Edward Elgar. This very demanding piece in three movements bears all the hallmarks of a piano concerto. Again, this small ensemble combined to give a dazzling performance which transcended the apparent slowness of their resources in the face of this overwhelming work. The Ensemble captured the excitement and emotion of the final movement and earned the loud and prolonged applause of a delighted audience.

The next concert for the Horndean Music Society will be given by the very distinguished duo of Eunice Pike (piano) and Mikhail Lezdkan (cello) and will take place at 7.30 p. m. On Thursday 7th March at the Blendworth Church Centre. Unfortunately, this will take place before this appreciation is published. However, the up to date programme of future concerts is published on the Society's web site:

www.horndeanmusicsociety.org .

Visitors and new members are welcomed.

Exciting Year ahead for the Painting Society

by Terry Devaney

Springtime is fast approaching and with it all the promise of an exciting and fulfilling year ahead. This is certainly the case for the members of the Society, who are now preparing work for the Spring Exhibition and Sale which takes place in the Parish Hall on the 16th and 17th March. The standard of the work seems to be better every year, that being the case, the public are in for a real treat!

The Society benefits from the input from some very dedicated and committed members whose efforts keep everything running smoothly, without them, the Society would not be able to carry on. We owe these members a huge debt of gratitude and any offers to help would be much appreciated. New members are always welcome and already a couple of “newbies” are making major contributions to the organising of events. New blood is essential to keep the Society fresh and moving forward, we have been very lucky in this respect. The relatively new website has helped to bring in new members and provides invaluable information to anyone wanting to learn about the Society.

Also in the programme of events is the Reunion with Silver Cup Awards, this takes place on the 14th May. Members take part in entering a competition which encompasses all the different mediums, it is also judged by the members, who vote for their favourite entries. Then there are the Summer Painting/Picnic days out to look forward to. Details of times and venues can be found on the website. Happy Painting everyone!

www.rowlandscastlepaintingsociety.org.uk

Rowlands Castle Tennis Club

Spring Back into Tennis

by Robin Thompson, Chairman, RCTC

Once again the Tennis season is nearly upon us – well I say the tennis season is starting, but for many hardy members of Rowlands Castle Tennis Club it never stopped. With teams in the winter leagues, including mens, ladies, mixed and juniors , it means tennis never stops.

Club afternoons have continued throughout the winter on Saturdays and now we will soon be starting our Club Evenings on Monday and Friday evenings at 6pm – a great way to keep active and enjoy social tennis. On the odd occasion we retire to the pub afterwards!

With many social tournaments last year, including the Diamond Jubilee and Olympic Tournaments, there are plenty of opportunities to enjoy the tennis on offer. In the more serious tournaments we had a record number of entries and our youngest ever Mens Singles winner (well done Matt Lee) at just 14 – surely the champion for many years to come.

Hopefully with better weather ahead in 2013, as well as the usual tournaments and social events, junior coaching and family tournaments, a quiz night and the club evenings, we are already planning the next Royal Tournament (to celebrate the birth) and indeed a new team event (modelled on the Davis Cup) , building on the successful Olympic Tournament last year.

We welcome new members of all standards and ages to join our social and (sometimes) competitive club. Please contact either myself or Michele Harpur (membership secretary) – jizzyharpur@btinternet.com or go to our website www.rctc.co.uk for further information.

Look forward to seeing you on the courts in the summer. chairman@rctc.co.uk



Photography Club given RCA grant

by Steve Radcliffe

The February meeting of the photography club was particularly notable in that the club were presented with a £500 cheque towards a digital projector. The village Photography Group meet each month to help each other learn how to use our cameras and take better photos. Some of us are beginners with the most basic questions about our cameras and some are really good photographers who are helping with the answers.

This is your chance to come along and learn which twiddly bits on your camera are the important ones and then how to compose and take photos you'll be pleased with.

We meet for a couple of hours at 7.30pm in The Parish Hall on the 3rd Thursday of the month. So the next meeting dates are March 21, April 18 and May 16.

Please come along. You'll probably know someone there. If you'd like any more information, please contact: Pat Carter at:

patcarter0@yahoo.co.uk or

Steve Radcliffe at

steve@steveradcliffe.com.



Fiona Charlesworth and Kevin Connell present Pat Carter with a cheque for £500 towards a digital projector.



We want to hear from you.

Do you have something to say? The RCA Village Magazine belongs to the whole Village., and serves as a channel of communication between villagers. If you have a point of view, write a letter and we'll publish it.

Simply write to Editor, RCA Village Magazine, 19 Mallard Road, Rowlands Castle, Hampshire PO9 6HN. Email to editor@rowlandscastle.com

Fundraising

Parish Hall Lottery

by Barbara Openshaw

Many people enjoy a 'little flutter' on The Grand National, football results or a national lottery. How advantageous it would be if Rowlands Castle residents contributed to our own locality. The Parish Hall Lottery does just that.

Next year is the centenary of our Parish Hall — a loved and useful building. Most of us have enjoyed functions, activities and meetings over the years. We have contributed to the wear and tear. There are constant demands for upkeep and maintenance. The renovation of the floor of the large hall is next on the agenda and, hopefully, will be completed this summer.



I am urging you all to join The Parish Hall Lottery Scheme, started by Harold Hardy in 2004 and now in need of rejuvenation ..

The game is played by the participants @ £1 per week paid quarterly or annually by Standing Order. The winner each week is the player whose personal number corresponds to the Bonus Ball number drawn by the National Lottery "Lotto" Draw on the Saturday of that week. The winner receives £25 and the remaining monies are paid into the Parish Hall Trustees Lottery Bank Account.

Please join the scheme to help our very own Parish Hall continue into the next century looking good and remaining a pride of Rowlands.

When you decide to join please put a note with your name, address and telephone number, through the letter box at The Parish Hall or send to

PHMC, 11, Links Lane Rowlands Castle Hampshire PO96AD

You will then receive an application form and a full account of the scheme. You are welcome to discuss the lottery with any member of the committee, or me, Barbara Openshaw.

telephone: 02392 412400 email: barbara.openshaw36@btinternet.com

Castle United are up for the cup

by Steve Crooks, Secretary

The 2012-13 local football season is coming to an exciting conclusion for three of our teams. There are excellent chances of success both in league and in cup competitions.

Our under 10's are currently unbeaten and top of their division with 6 games to go and have a cup semi-final against Denmead to play in March.



Castle United Under 10s 2012-2013

Our under 16's are in the GEC-Marconi Invitation cup final v Clanfield on the 10th March 2013 at Westleigh Park, Havant ko 2pm.



Castle United Under 16s 2012-2013

And finally not to be out done the Mens first team have a league cup quarter final and a Nicholson Cup semi-final to play in March.

All in all it will be an exciting end to the season and we wish all of our teams the best of luck in the coming weeks.

Club Chairman; Neil Watson, pictured being presented with the new away kit for the men's team from Sponsor Andrew Prismall; Managing director of

Castle United

Hants Wight Searches said that this shows that the club is going in the right direction. He said “ we have had over the last few years since we became a Chartered Status Club in 2007 seen a growing trend of teams from the club having success. “

This season having three teams all in with a realistic chance of trophies in one season shows that the commitment from our team managers, committee members, coaching staff and the players is now reaping rewards. This can only augur well for the club’s future.”



*Neil Watson, presented
with the new away kit by
Sponsor Andrew Prismall*

Gardening Club

Rowlands Castle Gardening Club is 6 this year! We meet at 7.30 pm on the third Wednesday of the month at the Church on the Green. Visiting speakers talk on a variety of garden-related topics to enthuse us, and there are exchanges of views and gardening tips during the social time. During the summer months visits to local gardens are arranged.

Visitors are welcome. Please see the local noticeboard for details of the monthly speaker.



St John's Parish Church

Rowlands Castle Flower Festival

by Pam Wynn

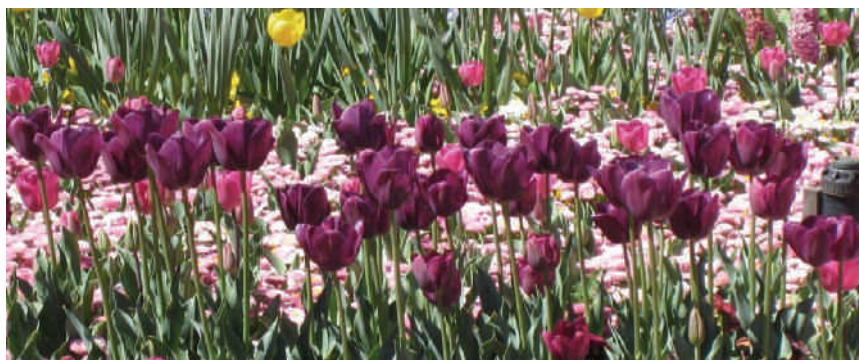
To celebrate the 175th anniversary of the consecration of St. John the Baptist church, we are holding a grand flower festival and are asking local flower arrangers, flower clubs and churches to take part. The festival is entitled “LET’S CELEBRATE”, and will hopefully raise funds for church mission and the Rowans Hospice.

The church has strong links with Jane Austen’s family and this seems the appropriate time to celebrate the link with *Pride and Prejudice* and the Reverend Austen and his family who are buried in the church yard. There are also memorial plaques in the sanctuary in the church itself. We will also be celebrating the history of the Parish Church.

To raise money for the festival, we are holding a grand jumble sale in the Church Centre on Sat. 13th April. Please bring any jumble to the hall between 10.00 and 12.00; the sale will start at 2.00. If you need any jumble collecting, please telephone me on 02392 412704.

If you would like to take part in the festival or if you would like to sponsor an arrangement (£25), please e-mail me at winnpamela@hotmail.com. The proceeds from the Festival will go to church funds and the Rowans Hospice.

Rowlands Castle Flower Festival
at St. John the Baptist Parish Church
5th – 8th September 2013



St John's Parish Church

A busy year ahead

by Rev Trevor Filtness, Associate Vicar

Your presence is always appreciated. A warm thank you to everyone who participated in our Christmas Services - it was really good to see you there. A special thank you also to St John's School Choir and Musicians who greatly enhanced many of our services with their singing and playing. I know that many also enjoyed the acting and singing at our Victorian Evening! Thank you for your support.

I hope we will again see you at our services during Lent and Easter; a time when we focus on Jesus' journey to the cross and the Good News of the Resurrection. Look out for the posters.

Open Doors: It has not been our custom at St John's, at least in very recent memory, to leave the church open for visitors, although the key has always been available from our office from 9am to 1pm. We are going to change this and I am pleased to say that your Parish Church will now be open for anyone who wishes to drop by, as from Monday 22nd April this year - the day after our Annual Church Meeting. Initially this will again be from 9am to 1pm but I hope that we will be able to open until 4pm very quickly afterwards. No doubt there are risks in this, but what is the point of a parish church if it is always shut?

We are also taking a look at how welcoming the church is for someone who drops in just for interest, for those who may want a quiet moment and also those who wish to pray. I know, for example, that several people who come to tend family graves would appreciate being able to sit for a while.

Our intention is to provide leaflets illustrating the history of the church together with other materials and also to provide an obvious quiet area for prayer that can provide a haven from the day. All of this might not be in place from April 22nd but we will have made a beginning and the door will be open!

Celebrating 175 years: This year will mark the 175th year of the Consecration of St John's in 1838 by the Bishop of Winchester. To mark this special occasion we will be celebrating with a Flower Festival in church from 5-8th September. The Festival will also have a range of supporting events. I know that many of our village organisations are already planning a floral display but if you would like to participate please contact St John's Office as soon as possible. I hadn't realised how many people enjoyed flower arranging until the organising team swung into action!

Community Events Ahead: As I write this we are also busily planning for Pentecost, which celebrates the coming of the Holy Spirit to the Disciples. This year Pentecost falls on May 19th and the Havant Deanery (the local 'collection' of C of E churches) and ourselves, are planning a series of open air events that weekend, so please keep a look out for the notices.

With every blessing

Contact numbers: 07785 568056; 02392 410111 (Office)

The Duchess of Cambridge ...That really got me thinking!

by Ken White, Presiding Elder

I know it is yesterday's news, indeed quite a few yesterdays ago but it gave me food for thought. Back on February 19th it was reported on the news bulletins that the bestselling historical novelist Hilary Mantel described the Duchess of Cambridge as "a Machine made princess ... designed by a committee and built by craftsmen." The rest is not worth repeating here! Surely that must have got the blood boiling as it coursed through the veins of a sizeable portion of the population! In her defence M/S Mantel did say that her remarks "Had been reported out of context"

May I have the temerity to suggest that what she was really trying to say was that Kate is not permitted to be her true self when on public duty. Whether that is true or not I have never had the opportunity to find out. Now, that is the point at which the "cockles of my mind" really began to spark into life! I was reminded of the reaction to Jesus Christ the founder of the Church when through exorcism he healed a man who was both blind and dumb. The Religious hierarchy of his time drew their own conclusions saying, "No wonder he can cast out demons. He gets his power from Satan, the prince of demons." * Surely the church worldwide has over time testified to the fact this was down right slander.

It must be admitted that the church has had a bad press lately. Indeed much that has been recorded in history such as the Crusades and reported in the media recently has far more than a grain of truth in it. But, does this paint a true picture of every congregation? What about the churches on our door step? You could say that like Kate, the church has not always been able to show her true self to the public.

By the time you read this you may have seen invitations around the village to come and discover for yourself the true picture of your local church, The Church on the Green. Maybe you took up the invitation if so I am sure you saw a different view of church life to the one that many people today believe is the norm. If you have not already done so, we would be interested to know your impressions of life behind the church doors. By the way, there is an open invitation to anyone to come and find out what it really is like to meet members of the local church at home in their Sunday best, and get to know them.

* Mathew chapter 12 verse 24 The New Living Translation.

Domestic Heating News

Some help with your energy bills

by Nic Radcliffe

Unfortunately I'm writing this on the day that the head of the energy watchdog, Ofgem, is on the front pages warning us that we will face higher energy bills in the UK as we become more reliant on energy imports. So I have to tell you about a new way of saving money on your gas bill that you may not have heard about.

There is now a new type of controls for condensing boilers called weather-compensating controls. I've fitted a few of them and have received great feedback on how they have cut people's bills. The breakthrough comes from the controls taking the boiler off its traditional pattern of fully on, then off, fully on, off etc. They move it to a steadier, lower use of gas to maintain the same temperature. Some manufacturers estimate this pattern uses 20% less gas and that's on top of the 30% savings that a regular condensing boiler makes versus an ordinary boiler. I can send you a fuller explanation. Please email me at nic@nicradcliffe.com and I'll send it over.

If a new boiler isn't for you, there is something else to think about. I'm sure we're all glad to see the back of winter and the snow. I was absolutely rushed off my feet during the cold snap because boilers everywhere were breaking down. I'm sure part of it is Sod's Law that as soon as the temperature falls everything keeping us warm begins to fail! But the main reason is that boilers are working overtime to try and keep the house warm and they are not in top condition. That is, they haven't been serviced.

I can't believe the number of houses I've been to with a boiler problem and the occupants have told me they haven't had it serviced in years. But why should our boiler be different to our car? If our car hadn't been serviced for years, we probably wouldn't be surprised if it broke down sometime. Boilers are the same but I think it's easy to take them for granted; we expect to wake up to a warm house and return to one. A good rule of thumb is to have your boiler serviced annually. A jolly good clean and recalibrate can save all sorts of bother.



Planning issues

by Marge Harvey (District Councillor)

It's that time of year again and I am desperately trying to get everything done .

Well, we all seem to have survived the winter and the flooding so far and I am now looking forward to the spring and summer!! I am happy to say that the parking for Links Close is slowly but surely getting there. Radian have employed someone to take the project forward and he seems to know what he is doing, so fingers crossed that this summer it will get done. It has been a very busy winter period for me, with the joint core strategy and the fall out from that keeping the officers and members on their toes.

There is still a lot of work to be done and a lot of workshops to decide how we are going to do it. I am quite confident that it will be fine and that we will be able to take it back to the government inspector for ratification by October this year. Speaking of government inspectors, I have been having many meetings at EHDC, to try and get our case to the inspector and I would like to thank everyone who wrote in and made their objections and to the Parish Council for all the work that they have put into this application and also to our MP George Hollingberry who wrote in support of our case. We just have to hope that common sense and good solid evidence will prevail. We can do no more than try our best and hope that the inspector will see just how much we value our countryside and our village. I hope that you will all come to the enquiry which as you all should know, is at St Johns hall on April 30th and May 1st, and we hope that it doesn't go into a 3rd day, but if it does, then so be it. We also hope that we get the right result and that money and houses are not the overriding issue!!

In April, the health issues will be taken over by the Clinical Commissioning Groups and that means that they will be making the decisions on health. Because I didn't know just what that meant to us ordinary people, I went to one of the meetings and asked many questions and in the end I was invited to join, what was there and then set up, a community advisory committee, so that we could question the CCG about anything we didn't understand. Believe me, there



County Council News

has been lots of questions! The group is quite new, so when we get into the nitty gritty of it, I will report back to you. In the mean time, if you have any questions you would like me to ask on your behalf, please let me know and I will be happy to try and get answers for you. As has been reported by The News, the Oak Park Community Clinic is up and running and I have spoken to quite a few people who have used it and they think is great, so I am really happy to hear that 3 years of work to get to this point, has been worthwhile. Of course, in between all of these things, I have my committees and parish meetings to attend, so it really has become a full time occupation, but I really do enjoy this work and the bonus is that our village gets the attention it deserves, so I am happy doing it.

Finally, please remember that you can always call or e mail me with anything that is bothering you that I can help with, or better still, come to my surgery on the first Thursday of every month in the cafe in the village and have a coffee with me and we can discuss any problems that I can help with and if I can't , then perhaps I can find out who can help.

I hope to see you all at the public enquiry and hope that you will have a chance to tell the inspector how you feel about the Keydell application.

Look forward to seeing you all.

Rowans Havant Support Group,

Mrs Ann Summers has taken over as Chairman of the Rowans Havant Support Group She has been in the group for 13 years and lived in Rowlands Castle for 16 years. They are always busy fund raising.

Upcoming events

Quiz on April 26th 2013, at Rowlands Castle Golf Club,
Stall at the Village Fair in July,
A jumble sale in October in the Parish Hall.

May Day Picnic

Come and join us

The Village annual May Day picnic will be on Bank Holiday Monday May 6th. The Blendworth Brass Band will perform their cheerful music from 12-2.p.m.

Please come along with friends and family to enjoy village company. There will be 100% beef burgers and sausages from Treagusts (Emsworth) cooked at the Fountain Inn.

All proceeds will be donated to the Rowan's Hospice.

Last year it rained incessantly but we are expecting lots of sunshine for 2013 and a warm early summer breeze.

See you on the green
Barbara Openshaw
Telephone: 92412400

Email: barbera.openshaw36@btinternet.com

Monday May 6th

A dog is a man's best friend

By George Hollingberry MP

A dog is a man's best friend, or so I like to think but recent letters in my post-bag have suggested otherwise.

An increasing number of dog thefts in the constituency have been reported to the police.

One particular event occurred on New Year's Eve in Owslebury when two working spaniels were taken from secure outdoor kennels.

Apart from the heart-rending fact that the owner hasn't slept properly since, these were working gundogs which take years to train.

Anyone will recognise how hard they will be to replace, not just financially but also emotionally.

Since the thefts a Facebook page 'FIND our DOGS' has been set up at this address: www.facebook.com/FindOurDogs to help trace the animals.

It has generated a great deal of support and is clearly one way of ensuring that this issue is kept at the forefront of people's minds.

Last month, the Environment Secretary, Owen Paterson announced that the Government is bringing in compulsory micro-chipping for all dogs from 6 April 2016.

I very much hope that this will help reunite owners with lost or stolen pets and relieve the burden of stray dogs on animal charities and local authorities as well as identify any dog that attacks someone.

As a smitten dog-owner myself, I find it hard to believe that each year more than 100,000 dogs are lost or abandoned at a cost of £57 million to the taxpayer and welfare charities.

The introduction of this tiny microchip - the size of a grain of rice - enables pets to be reunited with their owners within hours. It offers a simple and cheap solution that aims to give peace of mind to dog-owners by making it easier to get their pet back.

This move is a great step forward in the bid to reduce dog thefts but it's not a cure.

I'm sure you remember that other well-used slogan "A dog is for life." Well so it should be.

Permitted Development

by George Hollingberry MP

Householders wanting to extend their homes should now face less cost, less delay and less bureaucracy because of proposals to update the planning system.

Government changes to so called permitted development rights are in the pipeline and will allow owners to improve their properties without asking for costly planning permission.

Presently, those wishing to build an extension or a conservatory larger than a few metres in size have to fill in complicated planning application forms and pay a substantial fee.

It can then take more than eight weeks for a council to consider the application despite almost 90 per cent of the 200,000 submitted every year being approved by council officers without ever going before a planning committee.

This process just adds to the costs and delays of improving homes without adding any real value and is a bugbear to many homeowners.

As a district councillor, I shared the frustration of everyone at having to seek complicated permissions for a simple conservatory or an extension for grandma. Administrative costs and professional fees are also significant and often the difference between deciding to proceed with the project or not - a serious knock-on effect for an economy struggling at the moment.

The Government has proposed that permitted development rights be reformed. The proposals, which are currently in the consultation stage, will make it simpler and cheaper to build small-scale single-storey extensions and conservatories and will see around 40,000 householders a year freed from, form filling and £2,470, on average, in costs. But let's be clear: these plans will not mean the destruction of the green belt or four-storey extensions with turrets appearing on every street. Plenty of applications will continue to be considered through the current system - including all of the larger and controversial cases.

It is important to ensure that any impact on neighbours and communities is acceptable. For this reason, existing safeguards will remain in place and the changes to permitted development rights will not apply in protected areas such as National Parks, Areas of Outstanding Natural Beauty or Sites of Special Scientific Interest. But, on the whole, I very much welcome these changes and see them as a further step towards the modernisation of our planning system.

Parish Council News

Busy start to the year

by Clerk to the Council, Lisa Walker

As the ground begins to dry out after the heavy rainfall of 2012 - reportedly the second wettest year on record - I would like to start this article by paying tribute to the hard work of the Parish's Flood Wardens, our Flood Action Group, especially over the Christmas and New Year period. The Group was ably and very actively led by Cllr Steve Protheroe, who worked hard to forge close links with organisations (Hampshire County Council, East Hampshire District Council, and Environment Agency), local councillors, landowners and residents, during the latter part of last year. This meant the Parish was well-prepared when the lavants rose as predicted, and its urgent requests for porta-loos and sandbags were taken seriously and acted upon. The Council recognises the need for longer term measures to mitigate the effects of flooding in the Parish, although such decisions ultimately lie in the hands of Hampshire County Council and the Environment Agency.

The Recreation Ground has suffered from the rain, and some football matches and exercise classes have had to be called off recently because the ground was too water-logged. These issues are compounded by thoughtless dog walkers who do not clear up after their four-legged friends. There are at least 5 bins at the Rec and all can take dog waste, so please – Bag it and Bin it! On a lighter note, we hope the drier weather will allow Council to install the long-awaited outdoor table tennis equipment in the south-east corner, so watch that space. In addition, Council will shortly be finalising the outdoor gym equipment to be installed at the southern end of the Rec in late spring/early summer. All this equipment has been generously funded by the Village Fair Committee, with additional donations from County Cllr Sam Darragh's fund, EHDC's Community Forum and Rowlands Castle Association. Council is very grateful to them and hopes residents of all ages will enjoy using the new facilities. You never know, it may even encourage a future local Olympian!

Following the recent survey on the Pavilion, Council will be commissioning the building repair work recommended and appropriate further refurbishment. It hopes to utilise the skills of volunteers where possible so if you feel you can help, do get in touch. Council is also progressing the provision of public WCs at the Rec.

Some members of the Parish Council recently attended a constructive meeting with EHDC's Chief Executive and Leader which aimed to foster closer rela-

tions and greater understanding between the two organisations. This will be especially important in the coming months now that Keydell Nursery has appealed EHDC's decision to refuse its planning application for a garden centre at Mays Coppice Farm. The Appeal will be heard at an Inquiry starting on 30 April 2013 in St John's Church Hall. The Parish Council has consistently objected to Keydell's proposals on a number of grounds, beyond that of the adverse impact on the landscape which prompted EHDC to refuse the application. Bearing in mind many residents had also objected to the development, Council has taken the decision not only to support EHDC in its defence, but also to be independently represented at the Inquiry. This will allow Council to raise additional reasons as to why the Appeal should be rejected. Council's Chairman and Planning Group members are currently working closely with a planning solicitor and other experts to hone its arguments for the Inquiry. Council was careful to consider the financial ramifications of this action, and has launched a Fund for those local businesses and/or individuals wishing to contribute to the cost of this action. Residents are also welcome to attend the Inquiry and make representations should they so wish.

As some of you may know, the process for adoption of EHDC/SDNPA's Joint Core Strategy, the policy document which will govern planning decisions in the district for many years to come, is currently suspended pending re-examination in October 2013. Councillors attending the initial examination last October were concerned to note the attitude of many developers to Rowlands Castle. Conscious that the government is encouraging house-building wherever possible, your Council is keen to ensure that any further development in the Parish is appropriate to local needs and supported by adequate infrastructure. Work is likely to have commenced at the Oaklands site by the time you read this article. Council is hopeful that, despite its objections, this development will add to the character of the area without disadvantaging its neighbours.

On a related matter, Council has noted an apparent increase in retrospective planning applications in recent months. Whilst some of these may have been unavoidable, Council would urge all householders thinking of undertaking work to their property to seek early advice from EHDC's Planning Dept. EHDC is also able to provide advice on appropriate and/or indigenous trees and shrubs which may be relevant to individual planning applications. Council continues to act in accordance with the Tree Policy it adopted in Janu-

Parish Council News

ary 2012. It has recently commissioned a further survey of all the trees for which it is responsible. The survey report advised no urgent work was required, and identified some future work which Council will seek to put in hand as appropriate over the next year or so.

After its nil increase in precept for this financial year, Council was keen to limit any additional request for the forthcoming 2013/14 financial year despite the added calls on its budget. It therefore resolved to increase its precept by 2.5% for 2013/14, which it understands is less than that determined by many other parish councils. Whilst the proportion of council tax revenue which goes to the Parish Council is relatively small, residents may see an increase in their household's council tax, due largely to central government changes in calculating the council tax base.

Finally, Council welcomed its newest member, Liz Longman, who joined in December 2012 after an uncontested election. She joins what has proved to be a very cohesive team of hard-working members of the community, whose consistent support I greatly value as Clerk. As the snowdrops bloom and the daffodils flower, here's to 2013 and lets hope it's a little less wet than last year!

Highways (roads/pavements, drains, street lighting, overgrown vegetation etc.)

HCC Contact Centre: 0845 603 5633

Report on-line at: www.hants.gov.uk/roadproblems

Rights of Way (footpaths, bridleways etc.)

HCC Contact Centre: 0845 603 5636

Report on-line at: www.hants.gov.uk/rh/row/problem-report.html

East Hampshire District Council

Main Switchboard: 01730 266551

Website Home Page: www.easthants.gov.uk/

Rowlands Castle Parish Council

11 The Green, Rowlands Castle PO9 6BW

Email: parish.rowlands@btconnect.com

Website: www.rowlandscastlepc.org.uk

Tel: 02392 413044

St John's School Quiz Night

By Kevin Connell

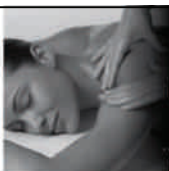
The St John's School fundraising quiz was a great success. A packed St John's Church Hall saw contestants answer questions ranging from the 2012 Olympics, to Music and Science. The half time meal was pie and mash supplied by Fraser Neal. An early lead was taken by the '100% Beef' team which, I am pleased to report, contained 4 members of the RCA. Not surprisingly several team's names alluded to the horse meat scandal. The early lead was maintained and 100% Beef came in winners on 71 points. Unusually, four teams were tied for second place on 61 points. They were 'Sensations' 'Strictly Come Quizzing', 'Village Idiots' and 'Horse Meat Not Included'. It was a winner take all quiz so the runners up weren't subjected to the added stress of a tie breaker. All proceeds have gone to the Sue Miness outdoor play project.

The cricket club quiz will be held on Saturday 13th April. and Rowan's Hospice on 26th April. Here is a warm up quiz. Below are 20 taglines from movies. Name the movies. Answers will appear on the RCA website.

1. 'He is afraid. He is alone. He is 3 million light-years from home'
2. 'They'll never get caught, they're on a mission from God'
3. 'Part man. Part machine. All cop. The future of law enforcement'
4. 'He's having the worst day of his life... over, and over again'
5. 'Protecting the Earth, from the scum of the universe'
6. 'An adventure 65 million years in the making'
7. 'To enter the mind of a killer, she must enter the mind of a madman'
8. 'You'll believe a man can fly'
9. 'For three men, the Civil War wasn't hell - it was practice'
10. 'The list is life'
11. '...and remember, the next scream you hear might be your own!' (to which Hitchcock movie does this tagline relate?)
12. 'Don't get him wet, keep him out of bright light, and never feed him after midnight'
13. 'The first casualty of war is innocence'
14. 'He knows no fear, he knows no danger, he knows nothing'
15. 'A chilling, bold, mesmerising, futuristic detective thriller'
16. 'He was the perfect weapon until he became the target'
17. 'The greatest fairy tale never told'
18. 'What if someone you never met, someone you never saw, someone you never knew was the only someone for you?' (with a tagline like that it can only be a Rom-Com)
19. 'Three decades of life in the Mafia'
20. 'Hang on for the comedy that goes to infinity and beyond!'



Unique
Hair &
Beauty



Hair Styling for all the family

|| Ladies Wash, Cut and Blowdry **£35.00** || Gents from **£14.00**
|| Children from **£6.00**

|| Advanced Colouring || Hair Extensions

Beauty

|| Waxing || Manicures
|| Pedicures || Massage

Parties & Packages

Enjoy your own Pamper event for any occasion... || Mini Minx Parties
|| Bridal Packages
|| Ladies Evenings

The Perfect Gifts for Mums

Mother's Day Promotions*

HALF PRICE Facials

FREE Gloss and Treatment

with Every Colour Service

Opening Times: Mon - Wed: 9 - 5

Thu - Fri: 9 - 7 Sat: 9 - 5

Email: uniquehairandbeautyltd@hotmail.co.uk

T: 02392 410 027

14 The Green, Rowlands Castle,
Hampshire, PO9 6BN

Major credit cards are accepted



*promotions valid for appointments booked on the 9th and 11th March 2013

Help *Curves* Support *THE Rowans* HOSPICE

- **FAST**
30 Minute effective workout
- **RESULT**
Burn up to 500 calories, measurable results
- **SUPPORT**
Fitness & nutrition advice from trained staff
- **WOMEN**
Women Only, all ages & abilities

www.curves.co.uk

Curves Waterlooville
27 London Road, Cowplain, PO8 8DF
T: 023 9225 0006

Curves Portsmouth (**OPENING MARCH**)
373 London Road, Portsmouth, PO2 9HJ
T: 02392 259996

*New members only, Terms and Conditions apply



Burchett Decorators

- Domestic, Commercial & Insurance Work
- 22 Years Experience
- All Types of Decorating including Wallpapering, Coving & Carpentry
- Fully Insured
- Clean, Tidy & Friendly Service

Ring for FREE Estimate
or Just Helpful Advice

07866 691 984
023 9241 3548

Email: Burchett.davis@btinternet.com

Keith was friendly,
reliable and worked
exactly as he promised
to, neat, tidy and very
personable

Customer, Stedham, 2012

Checkatrade.com
Where reputation matters

10/10

Member for 8 years

Burchett Decorators, Finchdean, Nr. Rowlands Castle, Hampshire

Why not advertise here?

Local businesses are welcome to advertise in RCA Village Magazine.

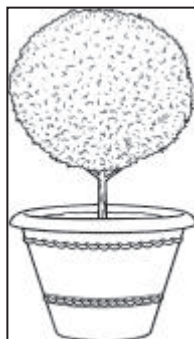
It's low cost and your advert will be seen by every household in Rowlands Castle, Finchdean and the surrounding area.

For more information contact
Prue Amner
Advertisement Manager
RCA Village Magazine

Email: adverts@rowlandscastle.com
or phone Tel 023 9241 2459

Gardener

Qualified gardener who really knows plants and correct pruning times is available for garden maintenance – all



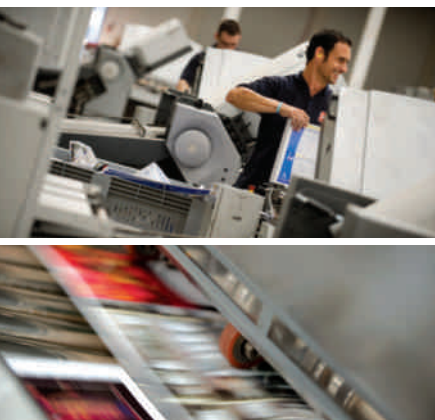
tasks from weeding and mowing to designing new planting schemes or more.

Debbie **023 9235 0714**
07875 499709

Print. Perfected

As the South's largest commercial printer,
we handle all your print needs:

**Programmes • Brochures • Folders • Catalogues
Stationery • Flyers and much much more...**



**DELIVERIES ON TIME EVERY TIME.
QUALITY GUARANTEED.**



Follow us on Twitter for up to the minute news,
print tips and last minute offers.

Large enough to cope, small enough to care

T: 023 9233 4900
enquiries@bishops.co.uk
www.bishops.co.uk



Print. Perfected



DO YOU NEED ASSISTANCE AT HOME?

AN INDEPENDENT CARE AGENCY

02392 362222

We can provide assistance with all social care tasks including:

All Personal Care Tasks
Domestic Tasks
Sitting Service

Bathing/Dressing
Shopping
Night Sleeps

We provide all the above services in Havant, Waterlooville, Petersfield, Portsmouth, West Sussex and Chichester Areas. Please telephone the above number for further information regarding our services.

Ashley Electricians

Dalkieth, Woodmancote Lane, Woodmancote,
West Sussex PO10 8RD

- Local reliable electrician.
- All electrical work undertaken from sockets to rewires.
- Free visual safety checks & estimates.
- Fully insured & Part 'P' registered.
- Member of Trading Standards 'Buy with Confidence' Scheme.

Contact Ed Ashley on 01243 373195 or 07733 467536

ejashley@tiscali.co.uk

www.checkatrade.com/ashleyelectricians

Checkatrade.com
Where reputation matters





**Inspiring gardens....
from concept to completion**

Landscaping • Bespoke Designed Gardens • Planting



Extending your home into your garden

FREE CONSULTATION AND QUOTATION

Tel: 02392 413865 Mobile: 07767 867603

office@charlesworthoutside.co.uk www.charlesworthoutside.co.uk



HEATING • PLUMBING • BATHROOMS

I can help with all your boiler, heating, plumbing and bathroom needs.
And I live right here in the village, so can call round at short notice.

**Here's my number.
Please keep it in a
safe place.**

07905 908143



**City & Guilds
Qualified**





DITCHAM PARK SCHOOL

Where every child is known and valued

A co-educational, independent day school for children aged 4-16 years
near Petersfield, Hampshire

- Caring family atmosphere.
- Small classes and individual attention.
- Impressive GCSE results.
- Wide range of extra-curricular activities, especially in music and sport.
- Outstanding location with excellent facilities including a superb sports hall



For further information please
contact the school office

☎ **01730 825659**

www.ditchampark.com
admissions@ditchampark.com

fabulous flooring with a perfect fit!



visit our website to find out more... waterloovillecarpets.co.uk

Service is the secret of satisfied customers and satisfied customers are the secret of our 45 year success.

- Fabulous Carpets from Greendale and Brintons
- Crucial Trading Specialist
- Fabulous Vinyl Tiles from Amtico, Karndean & Cavalio
- New Click only Vinyl Tile Range from Victoria
- Fabulous Pergo Laminate Floors with New Designs
- Oak Floors – Engineered Planks and Solid Click
- Fabulous Bamboo & Cork Floors
- 12 MONTHS INTEREST FREE CREDIT on all products



We promise you a flooring that fits your requirements, fits your budget and fits beautifully into your home. Please call in, anytime.

A pleasure to come home to.....

31 The Square, Petersfield, Hampshire Telephone: 01730 262223/267381 Fax: 01730 267394
email: sales@waterloovillecarpets.co.uk waterloovillecarpets.co.uk

*You imagine it,
we'll make it real...*



Specialists in bespoke luxury bathrooms

From design to completion
Attention to detail guaranteed
Come and visit our beautiful showroom
18 Elm Grove, Hayling Island,
Hampshire PO11 9EF

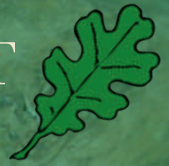
Tel: 02392 466007
www.aqua-ltd.co.uk

Showroom opening times: Mon - Fri 9am - 4.30pm Sat 9am - 12 noon

AQUA
BATHROOMS

Checkatrade.com
Where reputation matters

OAK FURNITURE OUTLET



£299

Quality Imported Furniture

The Very Best Prices

Wide Range Of Stock

Living, Dining, Kitchen
& Bedroom Ranges

28 North Street, Chichester, West Sussex, PO19 1LX
01243 776811
www.oakfurnitureoutlet.biz



£799

Rug Emporium

100S OF RUGS
IN STORE!

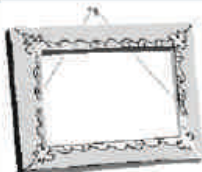
PRICES START
FROM
UNDER £100!

www.rugemporium.biz
www.chantryhouseoak.co.uk



TRADITIONAL,
MODERN
&
HAND WOVEN

28 North Street, Chichester,
PO19 1LX
01243 776811



Petersfield Framing Studios

**Picture Framing by
Andy Parks, MA, G.C.F.**

- ◆ Collection and Delivery Service in the Rowlands Castle area.
- ◆ Guild Commended Framer (G.C.F.) with 23 years experience.
- ◆ Over 400 different mouldings and 200 mount boards to choose from.
- ◆ Very competitive prices.
- ◆ Picture framing tuition also available.
- ◆ Tel: 01730 269926.
- ◆ Visit: www.petersfieldframing.co.uk

***"We Collect and Deliver Your
Picture Framing"***

microsomma



**IT Support for Home
& Small Business**

www.microsomma.com

**Please see my website for local
recommendations...**

Reliable & Local

Available 7 Days

Qualified & Experienced

0845 0170772

07796 346526

david@microsomma.com



Where play and learning fit together

Registration Charity Number 1088132
Rowlands Castle St Johns CEC Primary School
Whichers Gate Road, Rowlands Castle,
Hampshire PO9 6BB

OPENING TIMES: Monday to Fridays 8.30am ~ 4.30pm

Ofsted inspected

Early Years Foundation Stage curriculum

For a prospectus, or to arrange an informal chat, please drop in or contact:

LORRAINE BRYANT ~ Manager on 023 9241 2095

St. Johns CEC Primary School



QUALITY PLAYSCHOOL WITH AFFORDABLE FEES

ELIZABETH TURNER
PROFESSIONAL
CURTAIN MAKER

CURTAINS, BLINDS OF ALL TYPES, PELMETS
AND VALANCES, CUSHIONS ETC.

TRACKS, POLES AND

FITTING SERVICE

FABRICS, TRIMMINGS

FOR FREE ESTIMATE WITH EFFICIENT AND
FRIENDLY SERVICE

TELEPHONE / FAX 01243 389939

**PROFESSIONAL PLUMBING
& HEATING SPECIALISTS**

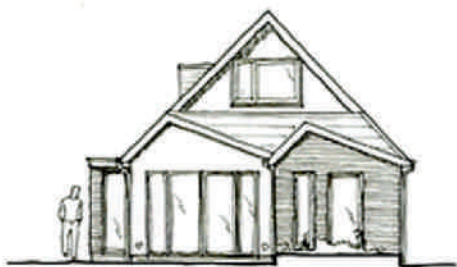
A. A. BARRETT

**51 Hatchmore Road
Denmead
Waterlooville
PO7 6TE**

**Tel: 023 92258057
Mobile: 07802321269**

engineering  **architecture ltd**

**integrated building
design**



experts in - planning applications
- building regulations approval -
structural surveys - for your home

t: **01730 352800**
e: mail@engarc.co.uk
w: www.engarc.co.uk

**LAVANT HOUSE
CHICHESTER**



- Thriving girls' day, boarding & flexi-boarding junior & senior
- Small classes
- 100% pass rate at 'A' level, all girls off to their first choice universities year after year
- Outstanding pastoral care
- Excellent Sport, Music, Drama & Art
- Flexible bus routes
- Happy girls

For more information, please contact the Registrar Tel : 01243 527211



Legal Advice You Can Trust

George Ide LLP Solicitors has a well established and highly regarded private client department which deals with all aspects of Wills, Probate, Trusts, Court of Protection and Powers of Attorney.

We can advise you on:

- The preparation of a Will
- Obtaining Probate
- Executor Responsibilities
- Investment Advice
- Post Death Variations
- Inheritance Tax Planning
- Trusts
- Lasting Powers of Attorney
- Court of Protection Issues

The breadth and depth of the expertise of our team is such that we offer private individuals and families a tailor made personal service of the highest quality.

We provide specialist advice to manage the personal affairs of individuals at every stage of their life. Our experienced Solicitors have a sound understanding of the issues, which can affect your personal wealth and family relationships and will take all of the necessary steps to protect your interests every step of the way.

Contact Ian Oliver on: 01243 812421
ian.oliver@georgeide.co.uk
www.georgeide.co.uk

On your side

LYNTON SERVICES

WWW.LYNTON-SERVICES.COM

Lynton Services provides first-class, flexible administrative support and assistance to business owners, trades people, consultants and individuals.

If you would like to talk about what we can do for you, please contact us at:

Email louise@lynton-services.com

Tel 07917 807155

MORRIS BUILDING SERVICES

Shaun Morris

113 Finchdean Road, Rowlands Castle, Hants, PO9 6EN

RENOVATIONS
ALTERATIONS
SMALL WORKS

ALL ASPECTS OF PROPERTY MAINTENANCE AND
REPAIRS, INTERNAL AND EXTERNAL

ROWLANDS CASTLE

(023) 9241 3130

FREE ESTIMATES

07941 742598

BUSY BUGGIES

for busy mummies



Fridays at 10am

Rowland's Castle Recreation Ground

A safe and effective 45 minute workout, with a fully qualified trainer, and no need for childcare, bring your baby or toddler in their buggy!

Socialize with other mums, get back in shape, get fit and have fun in the fresh air

For more information call Lorna on 07979 646 880
Or email lornahancockpt@hotmail.co.uk

Also available for Personal Training



- Do you have Arthritis?
- Do you feel stiff and in pain?
- Would you like better strength, mobility, posture and balance?
- Do you want to improve your fitness?
- Would you like to feel better and have more energy?
- Would you like to meet other people with arthritis and have fun?

Then come and try a FREE Taster Class

Local exercise classes to suit your needs run by Chartered Physiotherapist Juliette O'Hea For more details call Juliette 02392 413885 or 07974 238787. Email: physio@arthritisfirst.co.uk

S. Roberts Upholsterers

Professional Upholstery

Contract & Domestic Any size of work undertaken

We provide a free measuring and quotation service.

Find us on CheckATrade.com

Call on 01243 377200 for all your Upholstery requirements.

email: srulimited@hotmail.com
www.re-upholster.co.uk.



Proud members of
Checkatrade.com
Where reputation matters



S Roberts Upholsterers Ltd
Unit 17 Clovelly Rd, Southbourne
Emsworth, PO10 8PD



Caroway
Est 1980

**For all your
fencing needs**

Suppliers & Erectors of Every Type of Fencing Including:
Chainlink • Palisade (wood or metal) • Panels
Closeboard • Weldmesh • Posts (concrete or wood)
Security Fencing • Trellis • Gates



We also offer a friendly reliable and competent skip delivery service to all local areas. Our skip sizes are mini, midi and maxi and we also provide a Grab service.



**TRADE
AND
PUBLIC
WELCOME**

Visit our website for any fencing prices or call 023 9241 2768
www.caroway.co.uk

Caroway, Station Yard, Bowes Hill, Rowlands Castle, Hants PO9 6BP



BUILDING CONTRACTORS

COMMERCIAL, INDUSTRIAL and
MAJOR DOMESTIC WORKS

Joinery Mill, The Green, Rowlands Castle,
Hampshire. PO9 6BW

Tel 023 9241 2741
www.winnicott.co.uk

Established
1904

Fax 023 9241 2212
mail@winnicott.co.uk

HOME HARDWARE

Great Price, Friendly Advice – Your Local Store

EMSWORTH

Emsworth
Home Hardware
11 High Street
01243 376852

ROWLANDS CASTLE

Rowlands
Home Hardware
11 The Green
02392 412332

ALTON

Alton
Home Hardware
13 High Street
01420 85115

ROMSEY

Romsey
Home Hardware
38-40 The Hundred
01794 512141

Family Run Business

BATHROOM • CAMPING • CLEANING • COOKWARE • DIY • ELECTRICAL
HARDWARE • HOUSEWARES • IRONMONGERY • GARDENING • GIFTS
GLASSWARE • OUTDOOR LEISURE • PLUMBING • TABLEWARE • TOOLS

Open 7 Days a Week

CHILDRENS LEARNING CENTRE

Member of, PLA and 4Children

125 New Brighton Road, Emsworth

EDUCATIONAL NURSERY AND DAY CARE SERVICES

OPEN 50 WEEKS A YEAR 8.00AM - 6.00PM

We offer full time and term time care for children from 0 – 5 years, hours and sessions to suit your requirements. Also we provide holiday activities for children 3 – 5, school age children – 12 years and an after school club

Telephone: 01243 372015 or email: childrensle@btconnect.com



Introducing your newly refurbished village Hair and Beauty Salon

Offering a fantastic variety of Hair and Beauty treatments by experienced, professional stylists and beauticians.

Including:

- Cutting
- Colouring
- Perming
- Barbering
- Special occasions

Style Studio offers an extensive portfolio of services available for everyone.

And ... why not treat yourself to a spot of pampering in our beauty room?

Our qualified beautician hosts a range of personalised treatments.

For professional advice and bookings

**Call: 023 9241 2606
3 Links Lane, Rowlands Castle**



Extra Mech (Services) Ltd.

We are dedicated to provide a first class service with modern Plant.

**We Operate between Bournemouth to the West,
Dover to the East and Oxford to the North.**

**Our General Hire Fleet, to which new Machines are delivered
monthly consists of Excavators, Loaders, Planers, Vibrating Rollers,
Compressors, Dumpers, Compactor Plates and Skip Loaders etc.**

**Used Equipment ex Rental Fleet, which is well maintained with low
hours is offered for sale to our customers, and we provide a Service
and Breakdown cover if required.**

**We can Transport our Customers own plant up to 13.5 tones with
our Scania and Mercedes Beavertails and for small items we have
a 3.5 tones GVW with Tail Lift.**

We can supply Rebated Diesel Fuel. To approved customers

Telephone 02392 412888 Fax 02392 412370

Or our 24-hour service on 07860137102

**Or email us with you enquiry to
info@extramech.co.uk.**

**Or Visit Our Website on
www.extramechservices.co.uk**

We are expanding out of Recession.

**We need your enquiries to prove to you that we can
continue to remain efficient, reliable and competitive.**



Richard C Arnold

Optometrists & Contact Lens Practitioners

Est 1890.

**See Well
Look Good
Feel Great**

Care • Quality • Choice • Service

- Eye Examinations, Eyeplan™, Private, NHS
- Children's NHS Eye Examinations are FREE
- Experienced, Friendly, Qualified Staff
- Extensive Frame Selection - Designer to Budget
- Bespoke Contact Lenses
- OCT Eye Health Scanner
- Optomap - Advanced Digital Retinal Imaging
- Orthokeratology - Vision Correction whilst you Sleep
- High Performance Sports Eyewear and Sunglasses
- Low Vision Advisory Service - NHS Accredited



Please ask about eyeplan: **Eyeplan™** and **Eyeplan™ Complete**; Monthly payment schemes for Eyecare and Eyewear with many Additional Benefits

For further information please visit our website: www.rcarnold.co.uk

For an appointment call **Petersfield: 01730 263302**
or call in at 3-4 Exchange Buildings, High Street,
Petersfield, Hampshire, GU32 3JU

Weekdays: 9:00 - 5:30

Saturdays: 9:00 - 5:00



**Richard C Arnold
Optometrists**

Your local central heating & boiler specialist



Proud members of

Checkatrade.com
Where reputation matters

- ▶ New Boiler Installations
- ▶ Central Heating System Installations
- ▶ Service Plans from only £5 per Month
- ▶ 7 Year Boiler Guarantee
- ▶ Servicing & Repairs
- ▶ LPG & Oil Work Undertaken
- ▶ Havant Based



AURA GAS LIMITED



Costs include VAT!

New Boiler Deals From only **£1429**

Save up to 40% on your with a new 'A' Rated condensing boiler...

Replacing your existing Combi Boiler

Make and Model

Minimum Warranty

Cost

Worcester Bosch 25 SI

7 years

£1,779

Worcester Bosch 30 SI

7 years

£1,999

Dimplex Combi 24 HE

5 years

£1,529

Alpha Intec 24 x

2 years

£1,449

Replacing your existing regular boiler, one with a hot water tank

Make and Model

Minimum Warranty

Cost

Worcester Bosch 12 Ri

5 years

£1,629

Worcester Bosch 24 Ri

5 years

£1,869

Potterton Promax SL 12

2 years

£1,429

*The price you see is the price you pay!**

The cost includes a chemical system flush and Combi boilers are fitted with a new digital time control to optimise energy savings. All boilers include a Magnetic Filter to prolong the boiler life.

Ensuring your heating appliances run efficiently and safely

Call 02392 252171 or visit www.auragas.co.uk

*All prices are subject to a site inspection