

Rowlands Castle Association

Autumn 2016

Village Magazine

www.rowlandscastle.com



Richard C Arnold

Optometrists & Contact Lens Practitioners

EST 1890



Petersfield

ARNOLD & SON 
EST 1890

www.rcarnold.co.uk
3-4 Exchange Bldgs, High St,
GU32 3JU

Tel: 01730 263302

Midhurst

arnolds opticians limited
www.arnoldsopticians.co.uk
Ewen House, Red Lion St,
GU29 9PB

Tel: 01730 814035

Cowplain

arnolds opticians limited
www.arnoldsopticians.co.uk
69 London Road,
PO8 8UJ

Tel: 02392 250641

Always the choice for quality sympathetic
eye care from our team of
qualified Optometrists & Dispensing Opticians.
You can relax knowing your eyes are in good hands!





ROWLANDS CASTLE ASSOCIATION

Village Magazine Autumn 2016

Message from Chair.....	4-7
Village News.....	8-15
Local Council News.....	16-17
District Council News.....	18-19
County News.....	19-20
U3A.....	21
St John's School.....	22-25
Guides.....	26-27
Photography Club.....	28-29
Domestic Heating Advice.....	30
Thoughts on RCA Committee.....	31
Church on the Green.....	34-35
Craft Fayre.....	36
St John's Church.....	40-41
St Hubert's Church.....	42
401 Challenge.....	43
Rowan's Hospice and Alton Abbey.....	44
Good Neighbours.....	45
Gardening Club.....	46
Golf.....	48-49
Cricket Club.....	50-51

Note: All copy should be submitted to the editor by the
following dates:

March 18th, June 18th, October 18th

The magazine is distributed in early April, July and November.

The Village Magazine is published three times a year by the RCA. The aims of the RCA are to act as a channel of communication for the Village, to conserve the character and to enhance the life of the Village. If you would like to make a donation to magazine printing costs there is a collection tin in the hardware store or you can pop an envelope through Martha Dombey's door 26 The Drift, Rowlands Castle, PO9 6DG

Editor: Kevin Connell, 19 Mallard Road, Rowlands Castle, PO9 6HN

Tel: 02392 413857 email: editor@rowlandscastle.com

*Cover picture: Flypast during dedication of Stansted memorial, see pages 11 and 45
Photos: Steve Radcliffe*

Rowlands Castle Association

Message from the chairman of the RCA by Fiona Charlesworth Chair, RCA

Thank you to all those who supported the recent RCA Quiz and raised a magnificent amount (money is still coming in) to help with St Hubert Church repairs. See enclosed leaflet for details about St Hubert Friends fund raising. Please do help in any way you can.

The RCA have also recently donated funds to buy a heated trolley for the RVS lunch club and bought a number of tents for the Guides.

You will have seen a lot of posters about oil drilling in Markwells Wood, Forestside. This is in the South Downs National Park. UK Oil and Gas have applied for planning permission to drill in Markwells Wood, Forestside. Their plans include:-

- ✦ Drilling four further wells
- ✦ HGV traffic route planned from Horndean to Whichers Gate Road, Emsworth Common Rd and Broad Walk.
- ✦ Traffic movement from 7am- 7pm

An “innovative” technique using acid and other chemicals

This is **NOT** a little noddling donkey in a field and is virtually the same as fracking (just slightly less pressure used). They will be removing oil for 20 years.

Portsmouth Water have written to oppose the application. They say “that if Havant and Bedhampton Springs water supply source is impacted as a result of this application there would be significant effects on the population of the City of Portsmouth and surrounding areas. There are known features in the chalk south of the site making it a particularly sensitive site in terms of pollution risk. Pollution could appear at Havant and Bedhampton Springs within hours of a failure at the site.”

If you would like to know more go to Facebook “Markwells Wood Watch”. Objections should be made to South Downs National Park



Fiona Charlesworth
9241 3865
chair@rowlandscastle.com

Continued on page 6

Rowlands Castle Association

Your RCA Committee



Fiona Charlesworth (Chair)
9241 3865



Martha Dombey (Treasurer)
9241 0030



Gordon Charlesworth
9241 3865



Geoff Jacobs



David Hooper



Helen Penfold



Joyce Jacobs



Sue Morrison



Deborah Richards



Sue Leonard (Secretary)
9241 2108



Gillian Lovegrove (Webmaster)
9241 2426
webmaster@rowlandscastle.com



Kevin Connell (Editor)
92413857
editor@rowlandscastle.com

Rowlands Castle Association

It is still worth sending in a letter of objection if you are reading this after 17th November (the new extended deadline for objections) Please write as individuals, not one per household. Your letter of objection can be sent by email to the South Downs National Park Authority planning@southdowns.gov.uk – quoting the application number, location and proposal. Location: Markwells Wood-1 Well Site, South Holt Farm, Dean Lane End, Forestside, Rowlands Castle, West Sussex. Application No: SDNP/16/04679/CM Or you send a letter by post to: South Downs National Park Authority, South Downs Centre, North Street, Midhurst, West Sussex, GU29 9DH.

As I write, the RCA fireworks evening on 5th November is approaching fast. The RCA Children's Christmas Party (0-6years) is on Sunday 18th December 11-1 in the Parish Hall- excellent fun. Posters will go up (see bus shelter and RCA notice board) with contact details etc.

Finally the editor has received complaints about inconsiderate motorists parking across paths around the Village Green and elsewhere. Please be considerate of people in wheelchairs, mothers with children in buggies and people with impaired mobility who find manoeuvring around obstacles difficult. The paths are for pedestrians, they are not for car parking.



Rowlands Castle Association

Recent Donations and Support by the Rowlands Castle Association



Heated trolley donated to RVS Luncheon Club



Several tents donated to the Guides



All proceeds from the RCA Quiz donated for St Hubert's church repairs



Opposing the Markwells Wood oil drilling in Forestside

REMEMBERING IN ROWLANDS CASTLE.
Remembrance Sunday 2016 is November 13th.
Remembrance Day is Friday November 11th.
At the 11th hour of the 11th day of the 11th month the Union Flag will be lowered on the Village Green for the 2 minute silence. Please join together for this short remembering of all who have given their lives for our peace.

Barbara Openshaw Hon. Flag Master 92412400.



Village News

Twenty five years and counting

by Alan Eyres RCA Vice President

This June saw the 25th anniversary of the Company I run in Horndean, which means it is 25 years this November since I moved into Rowlands Castle, firstly into one of the cottages on the Green, then into a Rowlands Castle Brick Bungalow in Uplands Road when Jackie and I were married, four years later. Dating back to 1923, it was one of a first properties to be built on what was then a 'track'. Living next door was an elderly gentleman, Mr. Harry Goode, always insisted on being 'Mr. Goode', no first name terms, just Mr. Goode. He had lived in Uplands from the start, bring up his family with his wife, who passed away long before we moved in.

He would often knock on our door around 5.30 in the evening, after we had returned from work, to say 'I have your tea ready'. Always Smoked Salmon on well buttered white bread, strawberries with vanilla ice cream, which was always just beginning to melt, all to be washed down with a 'warm glass' of German white wine. A kindly soul, he and his afternoon Carer had spent their time preparing it all for us. He would regale us with stories of the 'old times', what was there before, what is there now, people who he knew in the village, not always some in a 'good light', he was a mine of information, even though we had heard many of the stories on several occasions!

Why the reminiscing, it is firstly a big contrast between a village such as Rowlands and Kingston upon Thames, where we had lived before moving down. On the few occasions we venture back up there, as soon as we leave the A3 at Tolworth, we say, 'this is the way we live in Hampshire' as there is an immediate queue of heavy traffic, along with accompanying noise and fumes. We had neighbours we knew of course, but there was not the variety of Clubs, Associations, Activities we have in Rowlands. In my first summer, I was 'roped' into helping out on Village Fair day by Jill my 'new' next door neighbour, it poured with rain!! So obviously I was on the Committee for the next ten fairs and yes it did rain occasionally!

Thinking fondly of our time next door to Mr. Goode, with his stories / history of his early village life, is one of the reasons I am involved in the formation of the Rowlands Castle Heritage Centre, along with several others, similarly keen in preserving the past in the hope we can safeguard the future. There has been a good response to the quest of archive photographs, newspaper articles, artifacts, plus we having been raising funds to purchase the iconic Model Railway of pre D-Day activities on the Green, it should arrive with us sometime in January, when we will have it up and running for all to see. Peter Goss who built the model lives near York, a long way from us, but his hobby is in building models of places

Village News

which have a military theme in one way or another and also of course, where a railway line can play a key part.

The fund raising has been going well, but we still need additional funds to be able to maintain the model in tip-top condition, to display within the village or at Model Exhibitions, dozens of which take place across the country every year. Peter was in Aldershot for the Farnham Model Club show, in October. Malcolm & I went to visit the show along with Peter, who was displaying his latest model of a Yorkshire Viaduct. There were ten times the number of people there than we had expected, with AA road signs showing us the way there. The RC Model will be a great attraction for us in the Village. Well known in the Modelling World, not only does it have strong historical significance with our Village, but is a remarkable piece of craftsmanship by Peter in building it, all to scale, with the accurate detail being so life like, it is almost 'real'. If you can further help in any way please do get in touch, if there are any Model Railway enthusiasts out there, we are looking for experienced 'drivers' to help, as and when we have the Model up and running.

Oh yes, the cottage on the Green I first lived in, is in the model, still painted white as it is now, and the Church on the Green, was where we were married, so in a small way it has some personal connections, as I am sure other Villagers will also find similar connections also?



Rowlands Castle Heritage Centre

Full steam ahead for Heritage Museum by Alan Drinkwater



Since first discussions about a village museum began back in January 2015, Rowlands Castle Heritage Centre continues to make gradual progress. Following a review in late 2015, the design of a ‘virtual museum’ or website using existing archive material became the top priority. Almost as important at the time, the website would raise the profile of the Museum and demonstrate that the concept was both achievable and of interest to residents.

An early version of the website was launched at the Village Fair in 2016, and reaffirmed in a ‘Grapevine’ message a month later. Several residents wrote that the early version of the website was interesting, and that they awaited further articles! Unfortunately, during October, the website was the subject of a hacking attack and was temporarily withdrawn, but has now been reinstalled.

The website relies heavily on photographs for colour and interest, particularly aimed at attracting younger people, but also benefiting from the work of the Photography Group who have been very supportive. After an introductory slider inviting viewers to ‘take a walk through the village’, the website gives our ‘Mission Statement’ as ‘Protect the Past, Record the Present, Prepare for the Future’. A subsequent section ‘About Us’ describes the area being covered which includes the Stansted Estate, indicates the viewership anticipated, and describes the museum as a ‘one-stop shop’ giving easy access on local matters or providing computer hyperlinks to other sources.

Several research projects have already been initiated – ‘The Brickworks’, ‘D-Day Period’, ‘Local Farming’ and ‘The Three Estates’ – with others planned; ‘The Railway and Station’, and ‘Local Castles’.

Also commencing at the Village Fair, residents were invited to demonstrate their support for the project by making pledges for the purchase the Award-winning Model Railway of Peter Goss (previously demonstrated in the Village on two occasions). Some two months later, it was considered that sufficient funds would become available to make the purchase. Agreement was made with Peter Goss to proceed with the purchase and prepare for its delivery. The pledges have been called in and further funding invited to display, store and insure the model railway. Sufficient funding for the purchase has now been received. The RCHC Working Group wishes to thank those residents who have donated, and is most grateful for the generosity.

Now, the Working Group continues to actively discuss the ‘Next Steps’ for the museum project. These include leasing premises to house and display the archive and model railway, preparation for registration as a charity, building of supervisory and management teams, and more detailed work to achieve sustained funding for premises and further research projects.

The Railway Station has been reconsidered as a possible centre for the Museum. An interim, short-term lease has been proposed and is being considered, pending agreement of a longer-term lease with the new franchise holder which may be SW trains or another successor, to be appointed by the Government in the New Year. Several aspects of



Rowlands Castle Heritage Centre

the interim offer – redecoration, insurance and funding of this offer - are now being considered.

For the future, the Working Group is proposing to register with the Charities Commission as a ‘Charitable Incorporated Organisation’ or CIO, so that it can sign a lease in its own name, for example. For this to be achieved, we need to agree a supervisory or trustee body and a management committee, as well as several part-time and other roles to function properly. Residents are invited to consider whether they would like to take part in this new initiative which is gradually gaining momentum. Members of the Working Group welcome the opportunity to discuss these opportunities with residents on an informal basis. Please feel free to contact us individually or collectively:

Alan Drinkwater	Tel: 92412066	Email: alan.drinkwater@btinternet.com
Kevin Connell	92413857	editor@rowlandscastle.com
Alan Eyers	92412443	alan@eyers4970.fsnet.co.uk
Malcolm Smith	92412384	malc.smith39@tiscali.co.uk
Sandra Hodgetts	92413264	sandraehodgetts@hotmail.com

Donations may be made to Sandra at 42, The Green, Rowlands Castle, PO9 6AB or by bank transfer, stating name of payee, to:
Rowlands Castle Heritage Centre, Barclays Bank,
Sort code: 20-45-45 Account no. 23080625

WOMENS FELLOWSHIP IN ROWLANDS CASTLE

Thank You to our small but very loyal and enthusiastic local ladies who attend our twice monthly meetings at Rowlands Castle Womens Fellowship. Would you like to come and join us or at least experience what we do? Our meetings are held on the 1st and 3rd Tuesdays each month – except August – between 2 and 4pm at St John’s Church Centre at the top of Redhill Road. Since last I wrote in the summer edition of the RCA magazine we have started a new programme for the first meeting each month which is devised by Claire. To welcome us back for the autumn term we enjoyed games and a good “catch-up” followed by “what’s my line” which was rounded off by scones and cream and jam!! For the third Tuesday meeting of the month - overseen by Alison – to whom I am most grateful, members take it in turn to run an activity. We all come up with suggestions and ideas. We will soon be round to our AGM in November with a Bring and Buy and in successive weeks we will have debates and quizzes. Completing our summer programme we had a very convivial lunch at The Horse and Groom in East Ashling on the hottest day of the year! We hope to hold our Christmas gathering at a pub in the village itself. Tea and posh biscuits – provided by Alison are always part our meetings. We all enjoy pretty flowers on the table as we start our meetings with a rousing hymn which we all join in and sing. I was made very welcome when I joined WF and that warm welcome is still as strong today.

Claire Stanley 02392412340

Village News

Obituary - Pamela Wynn by Jo Evans (daughter)

Pam was born on 28th April 1941. Although home for her parents, Doris and Arthur Lane, was in Hayes, Kent, due to the worry of bombs during the Blitz, Pam's Mum went up to Rochdale in Lancashire to stay with friends for safety and that was where Pam was born and spent the first 6 months of her life.

Although the war was still going on, Doris decided she would prefer to be back home as a family and Pam moved back down to Hayes, an area where she was to live for over 45 years. Pam attended Hayes Primary School and then went onto Sydenham High School for Girls. Pam always had a great love for animals and as a girl hadn't had any pets of her own, but often took her neighbour's dog Tony out for walks. Very sadly one evening Pam came home from school to find that the neighbours no longer wanted Tony and had sold him to a Pet Shop. Pam rushed to the pet shop after school the next day to try and get him back, but he had already been sold. Undeterred, Pam brought a puppy instead and came home from school with a puppy in her arms. I'm not sure how well this would have gone down if Jon or Jo had ever tried this when they were young and I don't think it was a story fully told to us until we were older. Anyway somehow Pam managed to persuade her Mum and Dad that she could keep the puppy, and so Mum had her first pet – Tony the Dog.



After school Pam went to secretarial college and then started working in London. However Mum had a love of languages and had an idea that she wanted to work abroad. When she saw an advert for secretarial roles in Switzerland, she jumped at the opportunity. She got a job working for Nestle in Vevey on Lake Geneva, a job which involved her using both German and French. Mum made many lifelong friends whilst working for Nestle, and as a group they have had many reunion holidays in Geneva, which Pam and Mike attended regularly.

After about 18 months Pam came back to the UK to work but the travel bug was still there and so she became a travel rep for Swiss Travel and worked a summer season in Interlaken. She then moved to work in a hotel in Grindlewald for the winter season so she could ski, but managed to pick a winter where there was no snow so she came back home again after a couple of months.

At that point Pam got a job as a secretary at Seismograph in Keston, Kent, a job which she stayed in until Jonathan was born in 1968.

Mum's love of languages led her to join a language speaking club in Bromley in 1963. At the same time Mike had just taken on a job that involved travelling to different parts of Europe and he had decided he needed to practice his language skills before travelling.

Village News

Pam and Mike never actually worked out who had joined first but they both joined within a week of each other in 1963.

However they didn't start going out with each other for a couple of years. They became good friends and Mum was always trying to fix Mike up with her friends as she thought he'd make a lovely boyfriend for someone! In January 1965 Mike gave a talk at the club on some of the photos he had taken, Pam was interested in photography and had just bought herself a light meter but didn't know how to use it. Mike volunteered to take Pam out to show her how to use the light meter and that was when they started seeing each other more.

When Mike started travelling to Lisbon Pam took him to the station one time to get the train and told him she couldn't pick him as she had decided she didn't want to get too serious with him, however when he returned to East Croydon station Pam was there waiting for him, and they started going out on a regular basis.

At that time Mike had a dinghy – a GP14 called Bali Hai, and was at that time looking for a crew. Mum decided sailing was something she would like to try and so they started sailing together, a hobby that they shared all that summer. In September that year, following a dinner out, they spent the evening talking and although Mike can't remember if he actually proposed they ended up deciding they should buy an engagement ring.

On 3rd May 1966 Pam and Mike got married at Hayes Church and were lucky enough to celebrate their Golden Wedding anniversary with friends and family just a month ago. In fact it took 50 years to get their wedding photos stuck into their wedding album!

Their sailing hobby was part of their honeymoon – they took their boat down to Salcombe and on day one took the boat out for sail and capsized. Obviously their married life was more successful than their sailing career!!

They started their married life in Westland Drive in Hayes and in July 1968 Jonathan was born, followed by Jo 2 years later in June 1970. They carried on sailing with the children, sailing at Hoo on the River Medway in the summer, and winter sailing on Bough Beech Reservoir where sometimes breaking the ice in order to launch the boat was the order of the day! Holidays at that time also included the boat – many family camping holidays with the camping club/boating group where both the car and the boat were filled up and towed to Wales, and even several weekends at Cobnor and a week on Thorney Island, long before Pam and Mike moved down to this area. Sailing must be in the blood, as it's a hobby that Jo and Rob, and Grandson's Rowan and Nathan have now taken up, with Jo and Rob capsizing far more than Rowan and Nathan!

Pam's love for animals, particularly horses, had been there throughout, and soon she was taking both Jonathan and Jo for riding lessons. Then in 1977 she was lucky to be able to take on a pony on loan. Debbie the pony had a mind of her own, and was the only horse on Shirley Hills who the Wardens would let go wherever she wanted because her owner had no control over where Debbie was going! Pam spent hours training Debbie to actually do as she was told and also walked miles taking Jonathan and Jo out for rides, and to Pony Club events. As you would expect of Pam, as Jonathan and Jo did more Pony Club activities, Pam took on voluntary roles within the club, including club secretary and even organised Pony Club camp and many shows and rallies.

Village News

In 1980 Pam was able to purchase a pony of our own. Lucky Star was a fantastic family pony and we all had hours of fun with her. Lucky Star was kept in a yard at Keston, and during that time Mum helped look after other horses and again made great friends, who kindly allowed Pam, Jonathan and Jo to ride and compete on their horses.

In 1986 Pam got her long standing wish of having horses in her own field at home as we moved to Lingfield in Surrey. There was a field at the end of the garden and Mum took on the project of building stables, a sand school and fencing the field. When viewing the house, Pam fell in love with a Labrador that lived in the house with the previous owners and jokingly asked if the dog came too. As it happened the owners couldn't take the dog with them and Tessa became the family pet. A Labrador puppy, Holly joined the family soon after along with several cats and more horses. Pam developed a love for dressage, and also supported Jo riding side saddle and drove all over the country for competitions.

In 1987 Jon went to University and then Jo followed a year later. Uni friends often came home to visit at weekends and Pam always loved having everyone to stay.

In 1989 Pam's father died suddenly and her mother Doris, came to live with her and Mike in Lingfield. The following year Jon graduated from University and moved back home, as he started a career as an accountant in Crawley. Jo graduated the year after and also moved back home. Pam and Mike had gone from a peaceful household of just 2 people, back up to 5 adults with 2 dogs, 2 cats and 3 horses, quite a houseful with always something fun going on.

In 1994 Jonathan was given the opportunity to go and work abroad, and took up an Accountancy post working in Winnipeg in Canada. Pam and Mike went out to visit, the first of many enjoyable trips to Canada.

In June 1995 Jo and Rob got married, and 3 years later Pam's first grandchild was born, Rowan, now nearly 18. Pam became Nana, and loved the role of being a grandparent, first to Rowan, and then Nathan, Ewan and Gavan – her 4 lovely grandsons, who she adored.

In September 2000, Jonathan married Teresa, and 4 weeks after their wedding they both emigrated to Canada, this time to Calgary. This led to more holidays to Canada for Pam and Mike, exploring different areas of Canada, including the Rockies and Vancouver. On one trip they even ended up finding a bear between themselves and their car! Mum was also a keen gardener and flower arranger. With a group of friends she started up Lingfield Flower Club, which is still going strong 16 years later with monthly meetings. Mum's love of flower arranging also helped her make many new friends when her and Mike moved down to Rowlands Castle, and she took part in many flower festivals as well as doing church flowers.

In 2004 Pam and Mike decided that they wanted to downsize and move to be closer to Jo, Rob and family. On one trip down to visit the area, Jo took them to have tea at Stansted House and then drove back home via Rowlands Castle. Pam and Mike both loved the look of the village and stopped to look at the estate agency window. Nathan, who was nearly 3 at the time, was determined he should go in the estate agency and that's how Pam and Mike found their new home at Hilbrow Close. Upon moving in, they went to church on the Sunday, and were made so welcome by the lovely congregation, who became such good friends to them, and Mum was invited to attend the WI the following

Village News

evening.

Being closer to Jo and Rob meant that Pam could take on more 'Nana' duties and would look after Nathan whilst Jo was at work, and take Rowan to Piano lessons and meet him from school. She was always interested in how her grandchildren were getting on, and loved being able to keep in touch with her Grandsons in Canada via modern technology on the Ipad.

Sadly Pam was unlucky enough to suffer from breast cancer 3 times, and although she had managed to beat the disease twice, the third bout came with complications including fluid around her heart, which affected her breathing. Pam still carried on doing as many activities as she could, especially tending to her garden which she loved being out in, and looking after her beloved dog Sandy. She celebrated her 75th birthday in April, and then Pam and Mike were lucky enough to celebrate their Golden Wedding together on the 3rd May, with a great evening of skittles with friends and family at the Barley Mow. Everyone so enjoyed themselves, an amazing evening to celebrate Pam and Mike's 50 years of happiness together.

Pam went into hospital a week later to have an operation to help reduce the fluid around her heart but sadly she was not able to recover. She had however had a full life, with lots of fun, laughter and caring. She will be missed greatly by all but always remembered fondly.

Rowlands Castle Historical Society

The society now has a permanent display cabinet for small items. It is in the small Parish Hall alongside other items of our village's past. If you have any artefacts that you would like to donate, either temporarily or permanently, please contact us.

Thank You

Paul Marshman RC 412028

Barbara Openshaw RC 412400

We want to hear from you.



Do you have something to say? The RCA Village Magazine belongs to the whole village and serves as a channel of communication between villagers. If you have a point of view, write a letter and we'll publish it.

Simply write to Editor, RCA Village Magazine, 19 Mallard Road, Rowlands Castle, Hampshire PO9 6HN. Email to editor@rowlandscastle.com

Local Council News

Rowlands Castle Neighbourhood Plan? **by Clerk to the Council, Lisa Walker**

Rowlands Castle Parish Council is considering whether to develop a Neighbourhood Plan. The preparation of Neighbourhood Plan must have the support and involvement of the wider community; the Parish Council cannot undertake this task alone.

The Plan itself, when prepared, will have to be approved by a referendum of all the residents of Rowlands Castle Parish and 50% of those voting must support it before it can become effective.

So what is the purpose of a Neighbourhood Plan?

Currently, there is a Parish Plan for Rowlands Castle but that covers the period 2008 to 2018 and will therefore soon 'expire'. So a new plan of some sort is likely to be needed. A Neighbourhood Plan would have to be taken into account by planning authorities as it would have statutory weight and legal force. It could build on the provisions of the existing Parish Plan to ensure continuity where appropriate. It could also make use of the existing Village Design Statement of 2000 and Local Landscape Character Assessment of 2012.

However, a Neighbourhood Plan cannot contradict the wider Plan of the local planning authority, ie that of East Hants District Council or South Downs National Park Authority.

It will set out planning policies that can be used when planning applications are being considered for the Parish. Some policies might encourage development proposals for the benefit of the local community; others may protect the special character of the Parish.

For example, policies may be needed to protect the Parish from more housing development and to maintain the green areas between Rowlands Castle and neighbouring areas, or to provide local people with the opportunity to downsize and continue to live in the Parish. Traffic and parking issues may also be addressed.

There may well be other issues that you as residents consider important, and which have not been mentioned. That is why the involvement of members of the public in the preparation of a Neighbourhood Plan is so essential. At the end of the process those in the Rowlands Castle Parish community must feel that it is their plan not one imposed on them.

The Parish Council will be carrying out a consultation in the near future to gauge public support and to assess how many people would volunteer to work on the project. A Neighbourhood Plan cannot and must not be produced by the Parish Council alone so it is essential that members of the community are also involved in its preparation.

Local Council News

Of course you do not have to wait for the full consultation. If you have any comments on the proposal and/or would like to get involved, please let the Parish Council know via its new website www.rowlandscastlepc.org.uk or its Facebook Page, or by contacting its Office on Tel: 02392 413044 or Email: clerk@rowlandscastlepc.org.uk

Highways (roads/pavements, flooding/drains, street lighting, overgrown vegetation etc)

HCC Contact Centre: 0300 555 1388

Report on-line at: www.hants.gov.uk/roadproblems

Rights of Way (footpaths, bridleways, pavement etc)

HCC Contact Centre: 0300 555 1391

Report on-line at: www.hants.gov.uk/rh/row/problem-report.html

East Hampshire District Council (waste collection, planning matters, environment)

Main Switchboard: 01730 266551

Website Home Page: www.easthants.gov.uk

Rowlands Castle RVS Lunch Club

The lunch club has been in existence for 33yrs now. It provides a freshly cooked nutritious meal and is a focal point to meet together and socialise. If you wonder what to eat and hate washing up treat yourself. Make new friends, enjoy some different meals.

Or could you make a difference? Yes with a little of your time you can do just that. Be a volunteer for the lunch club. We need help with preparing the meals, no special skills are required, just a willingness to join the Happy Working Group, all instructions will be given. Contact: Vi Anthony 02392412524

Or are you a driver who could join our rota to bring and return the less able members to the club?

REWARD Making a difference to another's well being, meeting new people, making new friends.

If you are interested in coming to the club or able to volunteer or would like more information please contact Mary Williams on 02392412763

District Council News

Spring Report

by Malcolm Johnson

As I reported in the summer edition of the RCA magazine the subject of Devolution has continued to exercise minds and opinions throughout the county as well as the district. We now have three proposals under discussion.

One from Hampshire County Council who have proposed a county-wide Unitary authority, one from the Isle of Wight, Southampton and Portsmouth and now a third from a group of districts in the north of the county. Hampshire has been endeavouring to gauge public opinion via both a MORI poll and on-line consultation which to date has received very little response. It would seem that the residents of Hampshire have other more pressing things on their minds than the convoluted versions of Devolution currently up for consideration! Should you desire more background information on two of the current proposals EHDC has created a web site that endeavours to provide un-biased answers to many of the questions raised by the subject of Devolution. It's available here:

(www.councilsfordevolution.co.uk)

On a more positive local note EHDC has been moving forward with its declared aim of removing council tax by 2020 by undertaking an increasing number of revenue-generating commercial ventures throughout the district and also further afield. The most recent has been collaboration with five other district authorities spread across the south of England to place various contracts with commercial service providers in support of a number of back-office operations. The first of these contracts was initiated in August with more to follow early in 2017. This will result in accumulated savings over the nine years of the contracts of some £40M. These contracts are in addition to others currently in place where EHDC provides support to other authorities in providing front line services like car park management. As a further example of how EHDC is developing its commercial strategy a wholly owned trading company, "EH Trading Services" has been formed to handle future commercial ventures. This is perfectly permissible under the local Government Act of 1972 providing more than 80% of the company's activities are carried out in the performance of tasks for the council. In the north of the district at the big Whitehill & Borden development an Enterprise Zone status has now been approved for the employment land on this important project at the old army barracks site.

EHDC Environmental Services have set up an on-line survey now for residents to make their views known on bin collections, street cleaning, grass cutting and general neighbourhood cleanliness. This survey can be accessed via the council's web site.

Hampshire County Council News

As I mentioned in the summer edition of the RCA magazine the council has again been able to provide the local Councillor Grant Funding Scheme. Currently I have funds available to help local community projects that require small top up funds to enable a project to go ahead and be completed. The application forms are available from the EHDC web site. Should you require any guidance in completing the forms please do not hesitate to get in touch.

Please remember that on the first Thursday of each month along with our Hampshire County Councillor Marge Harvey, I can be found in the village café between 1100 and 1200 so if you have something you wish to raise we will be there. I can also be contacted at EHDC via email: malcolm.johnson@easthants.gov.uk or by phone 92412096.

Malcolm Johnson
October 2016

County Council Report by Marge Harvey

It seems that it will be that time again very soon, so I will hope to bring you up to date as much as possible. It has been a very busy year so far trying to get everything done that needs to be done and not managing everything.

By now the drainage system in Bowes Hill should be completed, which I hope it will make a difference during the rainy season in the winter. It turned out that the drains weren't connected to the system and so the water just overflowed and ran down into the village centre and then of course, built up outside of the shops and the drains in the centre of the village needed to be cleaned out, so when the system is done I will ask the contractor to come and clear all the drains before the winter. Although Links Close is no longer in my remit, I am still attending meetings to try and get this sorted out because as you know I started this about 13 years ago and know the background to it.

Malcolm is working hard to try and get it solved, but Radian, who own the bungalows do not seem to want to have anything to do with it, so I will leave it to him to work on.

I have been working with the Parish Council on their traffic survey and have given them as much information as I can, but they really have worked hard to try and solve as many of the problems as possible. I have offered to use some of my devolved budget to pay towards a speed limit reminder, so that the village can try and slow down the traffic. It does seem that this is a common problem for everyone and we can only do our best to remind drivers to slow down.

I don't know if anyone noticed the officers at the double roundabout taking speeds

Hampshire County Council News

and activities, but I asked that they look at this as there have been a number of accidents there and I do think that something needs to be put in place to try and sort it out.

There was an accident on the bend in Durrants Road a few weeks ago, where a police car overturned and hit the lamp post. I'm not sure why it happened, but I saw that the lamp post was very quickly put right!!

I have been made co chair of the Hampshire Autism Partnership Board and I am very happy to take this on as there are many cases that I have been working on in my division and I do know that the government is very keen for this to be taken forward as mental health is one of the subjects that they are working on to try and improve.

In mental health of course, it can be something that is very short term, but Autism is something that you are born with and it will never change, so it is important that we get it right and get the right sort of help to these very vulnerable children and adults.

Of course, I still have my other committees which I take very seriously.

I am on two select committees and two other committees that are just as important and just as busy.

I'm sure that you will have seen on the television and in the press about Southern Health. The Chief Executive of Southern Health came to our Select Health Committee, of which I am a member, to explain about what she was doing to try and put things right. Our committee asked all the right questions and felt that we were unable to do anymore than we did as it was up to NHS England to sort out, but many of us were very pleased to see that she did the right thing in the end!

I would like to remind any of the clubs and associations in the village that I do have a devolved budget and if they need any help with paying for anything that is necessary, then I am very happy to help.

I have helped the parish with quite a lot of things for the village and I have also helped the school and very recently the project that is being run to try and get a heritage centre set up, so please call me or e mail me if you need any help.

I have also asked for the footways (footpaths) to be resurfaced, so I hope that it will happen very soon as I do realise that some are in need of treatment.

All that is left is to wish you all a very happy and healthy Christmas and New Year and I look forward to seeing you all when I start knocking on doors early next year or in the village.

Don't forget that I have a surgery with the District Councillor, Malcolm Johnson, in the cafe in the centre of the village the first Thursday of every month, but you can always call me or e mail me at any time.

Marge

Rowlands Castle U3A events for 2016

by Kevin Connell Chairman

The Rowlands Castle U3A has a wide variety of talks and events planned for the next year. Talks take place on the third Monday of the month in the Parish Hall at 14.00. Non members are welcome to attend for a fee of £2. As well as local events Rowlands Castle U3A is part of the Hampshire South Central Network and members are invited to a wide range of activities across the region.

We are currently working on expanding the number of Groups we run with Modern Art, Quizzing, Travel and Film all near to viability. Anyone who would like to start a group simply join the U3A. Let the groups co-ordinator know what you want to do and she will let the membership know about the group and off you go. Couldn't be easier.

The annual July outing was to Hever Castle and was enjoyed by all. Mike Whittle, who worked on the project as a Medic, gave a talk about Skylab in September which was absolutely fascinating. Steve Roberts, a real life 'George Carter' gave a talk about his life as a Scotland yard detective and his time with 'The Sweeney'. Again a fascinating talk with added hilarity in his numerous anecdotes. There should be something to suit all tastes in our varied programme which is listed below:

November 21st Richard Swaine: The Man who Never Was: the Greatest Wartime Deception

December 19th U3A Annual Christmas Party

January 16th Andrew Negus 'Portsmouth Harlots, Dung & Glory, Part II'

February 20th Bob Palmer 'Climate Change and Population Explosion'

March 20th Rona Musker 'My Career with Aunty, the BBC'

For information about the U3A visit our website at:

<http://u3asites.org.uk/rowlands-castle/home> or for further information contact u3achairman@rowlandscastle.com





Church School Inspection September 2016

by Kay Pennicotte-Henrie Head Teacher

In September the school was visited by Andrew Ricketts, a Church School Inspector. He spent one day in school and interviewed children, parents, staff and governors.

The children were the stars of the day and gave thoughtful answers to his questions. They also had lunch with him and introduced our puppets that represent our church values, to him.



There are some quotes from the report below. We were pleased that the inspection reflects our school accurately and is a positive outcome. The distinctiveness and effectiveness of Rowlands Castle St John's as a Church of England School are Good.

The school has made good progress since the previous inspection in developing a more explicit Christian ethos that has greater impact on the personal development of the children and is making a growing contribution to their learning.

Children talk with confidence about matters of faith and belief in an environment that values the views of all.

School leaders ensure that the Christian ethos has a high profile and is inclusive of all members of the school community.

"A significant strength of the school is the close link between church and school which has grown significantly since the previous inspection. Local clergy are fully involved in the life of the school; they support the school in numerous ways both pastorally, as members of the governing body and in leading worship. The local vicar serves as chair of governors."

Good examples of the mutually beneficial links between church and school

St John's School

include church

involvement in the school fete and support for the creation of the Garden of Peace. The RE leader is very effective and ensures that the subject has a high profile in the school curriculum. She has a good grasp of her subject, its strengths and what needs to be done to continue to take it forward. Parents say that their children bring home the language of the values and feel that they are inclusive to everyone 'regardless of whether they have a faith or not'. They say that the values help their children to develop relationships with others and that the school provides opportunities for their children to reflect and be calm. The school meets statutory requirements for RE and collective worship.

Adults care for the children, who say that they feel safe and secure knowing that they will be listened to. Parents say that the values help their children understand relationships. They talk about the three puppets which are used to represent each of the values and which, they say, give their children 'a language of values which they use at home'. Religious education makes a good contribution to the children's appreciation of right from wrong and moral and social issues. They are growing in their understanding of the diverse nature of modern Britain and that Anglicanism is a worldwide faith."



Thank you to everyone who contributes to our school to make it such a great place.

We always welcome help in school if you have any spare time please contact the school office 02392 412095

St John's School

Headteacher 'Busted' at school fair shocker by Jim Cochrane, St John's PTA Committee

On Saturday 11th June, the crowds once more descended on St John's Primary School for the annual Summer Fair organised by the PTA.

With a dual theme of Emergency Services and a Royal Tea Party, we were lucky to have our own special Royalty opening the fair – the Queen of the Crossing Patrol, Kath Molloy.

One of the main highlights of this year's fair was a brief but very exciting visit of a fire engine. We were also given a life saving skills demonstration from the St John's Ambulance. Crime figures were rock bottom this year due to the dozens of Police Children patrolling the fair who'd been busy making Police hats in the classroom-in-the-sky arts den. However, I understand some of the teaching staff had to be arrested and placed in the stocks where they got a good soaking.

One person who definitely got "Busted" was Headteacher, Kay Pennicotte-Henrie, who was the lucky winner of the Silent Auction for the Busted concert tickets!

As ever, there was lots of positive feedback about the fair. Grace from Year 2 said "I had such fun at the Summer fair, seeing the dancing and meeting the Policeman!!" and Elijah of Year 1 added "It was good".

With the funds raised from all the stalls including favourites like the bouncy castles, open top bus rides, Pimms bar, B-B-Q and the hugely popular raffle, the PTA are delighted to announce that the fair this year raised a massive £4219. This will be put towards purchasing new tablets and digital cameras for the school.

The PTA would like to give a special thanks to the St John's Ambulance and Fire Brigade and to everyone else who dedicated their time and hard work without whom the fair simply would not happen.

WE NEED YOU! The PTA is always looking for volunteers to help. Whether you want to join the committee or just help out at events like the summer fair, please contact chair@stjohnspta.com



St John's School



Guides

1st Rowlands Castle Rainbows

by Lorna Hancock (Tink)

Our names are Lorna and Marie, and we took over 1st Rowlands Castle Rainbows in September. Although we are now known as Tinkerbelle and Periwinkle (Tink and Peri), as in true girl guiding fashion we let the girls choose our names on our first week.



Since taking over Rainbows, lots of people have been asking us what it is. It is the youngest section of girl guiding (before Brownies) for girls aged 5-7. Rainbows learn by doing – they get their hands dirty, do sports, arts and crafts and play games. Being a Rainbow is all about having the space to try new things. Through taking part in a range of different activities with girls their own age, Rainbows develop self-confidence and make lots of new friends.

We meet on a Thursday evening, and this term among other things we are celebrating 150 years of Beatrix Potter, through lots of crafts and fun activities, and preparing 7 new girls to make their Rainbows promise, before moving on to lots more seasonal activities later in the year.

If you have a daughter that you think would like to become a Rainbow, please register through 'Join us' at www.girlguiding.org.uk and we will be in contact. (If you want to make sure she joins when she is 5, make sure you put her name down early, as our unit has a waiting list).



Guides

The RCA presenting a cheque for £529.86 to purchase 2 tents and ground sheets to Jane Beverage unit leader of the 2nd R.C guides for their over night activities, 12 guides will be going on their first adventure in Feb 2017, where guides from all over will meet up at Foxlease near Lyndhurst new forest.



Photography Club

Into 2017

by Kelvin Schaflí

A recent gathering of core enthusiasts decided unanimously to continue the activities of the group into 2017.

We believe there is enough interest in and passion for the craft to justify efforts to build upon what has already been established in the village by continuing with a vision to promote the appreciation and understanding of photography as a visual medium through stimulation, education and participation. The RCPG is actively seeking to attract new participants, involve current ones more frequently and play a greater role in developing creative photographic talent in and around the village.

In a program that's going to include inspirational speakers, workshops, challenges and outings, some of the activities planned for the year ahead include talks and participation in food photography, a fashion shoot, beautiful landscapes, seasonal light and a constructive session on how to critique your own work.

It's going to be a year of fresh challenges, fresh stimulation and increased participation. We welcome all residents both experienced and inexperienced to join us in what we hope will be a dynamic and interactive group focused upon photographic skills learning and social enjoyment.





Quality nursing care tailored to your needs

Springfield Care Homes are family run residential and nursing homes, fully equipped to care for those seeking long term nursing and residential care, convalescence or respite.

We have two homes, one in Emsworth and one in Southbourne. Both of these are staffed 24 hours a day by our caring nurses and health care workers. We truly strive to create a home away from home for all our residents.

At Springfield, we believe that every day should be lived to the full.

- 24/7 experienced nursing support
- Ensuite rooms
- Large, comfortable modern lounge areas
- Dining areas looking out into the gardens
- Landscaped patio and relaxation areas
- Telephone points in all rooms
- TV and Wi-Fi available

We look forward to welcoming you...



Springfield Care Home
72-74 Havant Road
Emsworth
Hampshire
PO10 7LH
Tel 01243 372445



Prinsted Care Home
Prinsted Lane
Prinsted
West Sussex
PO10 8HR
Tel 01243 372024

www.springfieldnursing.co.uk

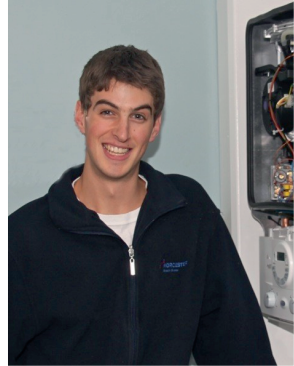
Domestic Heating Advice

Smart Meters

by Nic Radcliffe

Are Smart Meters all that smart?

I have two topics in this article. First, there has been a lot of talk recently in the energy industry about installing smart meters. The energy companies are promoting them telling us that they will help us use less energy. What's for sure is that, whether they will or not, the installation is in their interests as they cut down their cost of employing meter readers. The government has stated that there are currently 3.3 million smart meters installed in homes in the UK. The original plan is that by the end of 2020 there'll be 53 million fitted in more than 30 million homes and businesses, although delays in the infrastructure are making it increasingly unlikely. What I've found surprising is that the predicted cost is around £200 per meter - that's £400 per household for gas and electricity versions.



Along with the smart meter you also get a digital read-out to plug in somewhere in your home. This tells you how much energy you are using in real time. The idea is that this will encourage you to switch off lights and appliances you aren't using. This is great in theory but, in practice, research has shown the result is only a 2%-3% reduction in energy consumption which is only worth around £33 a year for a typical customer at current prices. So at an estimated £400 per household for the meters I'm wondering if smart meters really are that smart!

Second, as I'm writing this at the end of October we are in that time of year when it's time to switch the heating on. One recent Monday morning I received twelve calls from customers with no heating coming from their boilers or with various radiator-related problems. I'm sure I'm not the only heating engineer experiencing this. I know I've said it before but I can't stress enough how important it is to test your heating system a couple of times over the summer. It helps keep mechanical parts from seizing up from half a year of no use. Not only will this save you money on an engineer visit or new parts but it will also prevent a cold evening or two without heating when you need it the most.

Thoughts on joining the RCA Committee by Geoff and Joyce Jacobs

Our life in the village started peacefully enough twenty-two years ago. Joyce had retired, with Geoff very active in his career as a Management Consultant, working across the UK and abroad.

With Geoff spending a great deal of time away from home, our understanding of village life and the opportunity for integration, was painfully slow. Four years ago, Geoff too decided to step back from his working life with just occasional mentoring at Portsmouth University and sitting on the Board of Healthwatch (Portsmouth).

Retirement also gave Geoff his chance to write and four novels later, still he perseveres, though never a serious contender, for the Man Booker Prize for Fiction.

Our interests extended to how we might contribute to society and fellow retirees. Involvement with U3A., RCCA and other groups focused our attention on village life. Then we heard about the RCA.

Our introduction was intriguing as we listened intently to the range of programmes they manage, for the benefit of Rowlands Castle. At last, we had found precisely what we sought. A charitable group dedicated to the enrichment of village life.

Finding our position on Committee and how best we could contribute, took a few meetings. With Kevin Connell in the Chair, since replaced by Fiona Charlesworth and when the annual programme was discussed, our interests and experience identified primary roles for us.

Geoff with Sue Morrison arranges the Firework Night. Joyce, for Press Liaison. What is important is that all RCA Committee members are involved with every programme, working as a dedicated team. We also have the May Day, attendance at Annual Summer Fayre, then Quiz Night and Children's Christmas Party.

You will have seen RCA collecting litter in the village to acknowledge the 'Queens' birthday and ever environmentally aware, we have our own 'Greening' project. Full RCA details are on the Web Site.

Any funds raised by the RCA are ploughed back into village projects. Recent examples include contribution to Allotment Holders car parking, Heated Food Trolley for the RVS weekly mid day meals in the Parish Hall, Brownies/Guides camping equipment and RC Heritage Centre early research. We continue to invite requests for help both 'hands on' and monetary, from anyone in the village.

Approaching our second year, we honestly feel involvement with RCA to be one of the best decisions we have made. Essential to RCA Committee tasks are the many villagers who volunteer, to whom, we are indebted. Not forgetting local businesses who provide invaluable help, particularly on Firework night. We could go on but enough is enough and we hope our obvious enthusiasm has not been excessive.

Through our twelve years in the Royal Air Force and in our previous homes, we can only hope that society, whether in towns, cities or villages have the good fortune to have their version of our RCA.

Look forward to saying hello as we crisscross in our village.

A lifeline for families in crisis



Support and friendship
for families

Home-Start Butser

Behind closed doors, families with young children are suffering the effects of bereavement, redundancy, relationship breakdown, disability, illness, loneliness, and depression. These crises affect the children as well as the parents, and when no one is there to help the effects can last for years. Home-Start volunteers change lives for these families by supporting them during times of crisis: they walk through the door and provide vital support because we believe every child and parent deserves the best chance in life.

"My three hours are very special and without Home-start there may have been a tragic ending.

They never looked at me and said sorry you don't fit into this box."
Parent

Last year our 60 volunteers supported 77 families and 168 children in East Hampshire, but referrals are on the rise, and we are having to turn down families who need our help, due to lack of funds.

With your help we can say **yes** to the next family that calls, and give them a chance of a brighter future.

"With Home-Start's help I got through a terrible time,
and now my house is full of hope and laughter.
My volunteer was a lifeline." Parent

We are grateful for all donations, large and small,
which help us keep this vital service alive.

To
donate:

Call us on 01730 233 755

Email Nicola Winter, Scheme Manager, office@homestart-butser.org.uk

Visit our website www.homestart-butser.org.uk.

- ☐ Please tick here if you would like to receive our newsletter
- ☐ Please tick here if you are interested in joining our 100 Club
for £5 a month (currently monthly prize £96).

Name: _____

Address: _____

Email: _____

Phone: _____

Return to Nicola Winter, Home-Start Butser, Winton House Centre,
18 High Street, Petersfield, Hampshire GU32 3JL

Join us on Facebook, Twitter, and Google+



Thank you for helping us build a brighter future
for families and children in crisis in East Hampshire.

Company Number 7508097 Charity number 1140692

Church on the Green

'Tis the Season to be thankful! **by Jace Clark, student pastor**

Well, I think it is true to say that most of us at one stage or another have spoken out the very well known and familiar phrase "Time certainly does fly!" It is very true to say that this year is met with no exception and with the Summer holidays behind us, the darker Autumn evenings setting in and Christmas but a few weeks away, it all makes for that busy time of year where lots of things need to be done.....yesterday!

As is written at the top, 'Tis the season to be thankful and although we normally sing the well loved Christmas tune, 'Tis the season to be jolly, sometimes and for some of us, Christmas can bring a range of different emotions and sometimes, not always happy ones but it is amazing that if we change just one word from 'jolly' to 'thankful', then it changes the whole meaning entirely! We all have something to be thankful for, no matter what our circumstances. It clearly says in the Bible that we should 'give thanks' even for the small things in life and even the every day things we take for granted such as food, water, a roof over our head, family, friends and as the Sunday school chorus would say, the flowers, trees and sunshine.

With thankfulness in mind, our Friday morning 'mums and toddlers group' called Music Makers is going from strength to strength. With new friends joining us and the group going from bi-weekly to weekly (except for the last Friday in the month), this has proved very successful and a great time is had from the youngest to the oldest alike.

Our Tuesday and Wednesday morning coffee mornings continue to do well, with regular numbers each week coupled with a hot drink and a slice of cake, this is definitely well received!

This year on Friday 28th October, we are holding another of our Family Light Parties and as before it will be a joint event with St Johns. Last year we saw a good turn out, with lots of families enjoying the games, craft tables and fun.....not to mention the wonderful hot food on offer such as burgers and sausages, we pray that this year will be another great time of enjoyment.

As we said at the outset, with Christmas only around the corner, we have our Christmas services to look forward to.

On Sunday 18th December at 5pm we will be holding our Christmas Carol Service, which will be an hour of carols, poems, traditional Bible readings and a thought for the day, all the while with candles all lit around the chapel and with the added bonus of some craft laid on for the younger ones. Mince pies and hot drinks will be served before the service begins.

On Tuesday 20th December at 10.30am we will be holding our ever popular Carols over Coffee which will see an hour of singing carols and making requests all while we enjoy hot drinks and festive munchies!

On Saturday 24th December at 11.30pm we will be holding one of our most well attended services, the Christmas Eve Celebration Service. This will consist of approx 45 minutes of traditional carols and hymns accompanied with a band of musicians, prayer and a short

Church on the Green

thought for Christmas. It is a great time to see Christmas day in with the true meaning of what Christmas is really all about, Jesus.

Please note that there will be NO Sunday morning service on Christmas day. Lastly, on New Years day at 10.15am and being the first Sunday in the month, along with the first day of a new year we will have our normal Cafe Church. This is also a great way to enjoy Church.....and as we always say 'but not as we know it!' As with our regular Cafe Church style services, this consists of quizzes, poems, trivia, a song or two and a word for the day and this time, being a special day, there will be festive activities for all to enjoy!

So, as you can see, we at Church on the Green have no shortage of things to look forward to in the season ahead. Please do feel free to come along to any of the above, you will always be sure of a very warm welcome.

May we take this opportunity to wish each and every one of you a happy and blessed Christmas and a peaceful new year and with thankfulness in mind, lets us be truly thankful for the greatest gift of all, the Saviour who is Christ the Lord.



Caroway
Est 1980

**For all your
fencing needs**

Suppliers & Erectors of Every Type of Fencing Including:

**Chainlink • Palisade (wood or metal) • Panels
Closeboard • Weldmesh • Posts (concrete or wood)
Security Fencing • Trellis • Gates**



We also offer a friendly reliable and competent skip delivery service to all local areas. Our skip sizes are mini, midi and maxi and we also provide a Grab service.



**TRADE
AND
PUBLIC
WELCOME**

Visit our website for any fencing prices or call 023 9241 2768

www.caroway.co.uk

Caroway, Station Yard, Bowes Hill, Rowlands Castle, Hants PO9 6BP

Craft Fayre

Rowlands Castle Craft Fayres

by Hilda Tart



The craft fayres will be held on Sat 5th November and Sat 3rd December in the Parish Hall, Links Lane, Rowlands Castle PO9 6AD.

Admission is free and refreshments are provided by Zoe Chapman. We are very grateful for her support and hard work this year. There will be approx. 24 stalls selling high quality items hand-made by local people.

Crafts include Beading, Woodwork, Silverwork (jewellery), Glasswork, Knitting, Chinese art, Ceramics, Candle-Making, Spinning and Dyeing.

This year there has been much interest from prospective stall-holders and we have a waiting list at present.

If you are looking for gifts for Christmas or for another special occasion you are sure to find something suitable at the next fayre.

If you are interested in having a stall please contact: rowlandscastle-craftfayre@gmail.com

Find us on Facebook at Rowlands Castle Craft Fayre.

Rowlands Castle Craft Fayres

The local Artisans' showcase

Parish Hall, Links Lane,
Rowlands Castle, PO9 6AD.

1st Saturday Apr, May, Jun, Jul,
Sep, Oct, Nov & Dec. 10am-1pm.

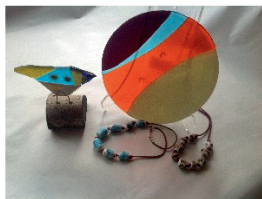
Free admission, Refreshments,

Varied Crafts, 20+ exhibitors.

rowlandscastlecraftfayre@gmail.com



Rowlands Castle Craft Fayre





NSPCC CHRISTMAS FAIR

**Please support us and raise money
for the NSPCC at our annual Christ-
mas Fair.**

Date: Saturday 26th November

Time: 11am to 2pm

Where: Rowlands Castle Parish Hall

There will be Christmas stalls with gift ideas,
cards etc.

Crafts to entertain the children and a visit from
Father Christmas.

Christmas Carols sung by the children of St
Johns School.

Refreshments including soup, sausage rolls,
mince pies, tea and coffee.

NSPCC

EVERY CHILDHOOD IS WORTH FIGHTING FOR

Martin Steels Ltd

Optometrist & Contact Lens Practitioner

The LATEST in Eyewear Technology & Style

OCT technology for sight protection



With a quick and simple OCT test we can examine the internal structure of your eye and can detect problems before they start affecting or damaging your eyesight

In many cases, the earlier the treatment the less likelihood of permanent eyesight impairment

Ask about OCT when you book your next eye test

High quality & high fashion frames

We always stock a wide selection of the latest fashions and innovations
Whatever your look, you'll find a match at Martin Steels

RADLEY
LONDON

Silhouette

AUSTIN REED

Chloé

PORSCHE DESIGN

R
RODENSTOCK

MICHAEL KORS

Maui Jim

ck
Calvin Klein

LACOSTE

22IKILL



Saturdays: 9am - 1:00pm
Weekdays: 9am - 5:30pm

4, The Old Flour Mill,
Queen Street, Emsworth

martinsteels.com
01243 375141

'Excellent' in all categories
Independent Schools Inspectorate 2015

Portsmouth High School

Open Doors

Please see our website for details
of our next Open Doors event

An independent school for girls from Nursery
to Sixth Form achieving outstanding results

www.portsmouthhigh.co.uk

*Part of the Girls' Day School
Trust network of schools*

A school minibus
service collects
pupils from
Rowlands Castle
daily and takes
them right to the
school door



Portsmouth
High School

023 9282 6714 • admissions@por.gdst.net

Part of the Girls' Day School Trust network of schools

St John's Church

Upcoming Events

by Revd Trevor Filtness Vicar of St John's

How the year goes by! As I write this, I am reminded by Barbara, who brings us together to commemorate Trafalgar Day each year, that once again 21st October is very close but also that we are once again in the season of Mists and Mellow Fruitfulness! Days are very much shorter but there is a beautiful red-gold hue to the landscape. But this might be a memory by the time of publication as we rush headlong into Advent and Christmas.

I know that Kay, our head at St John's School, will mention this but just to say how pleased we are to receive an excellent report from a recent Ofsted inspection into the school's integration and application of its Christian values. As you know St John's is a Church of England Controlled School, so this inspection also looks at how the school is supported by the church both at local and diocesan level. Congratulations to Kay and all staff, all of you in Rowlands and close by who support the school in many and numerous ways. But a big thank you to our children who responded so well to questions by the Inspector. They showed not only good factual knowledge but perhaps more importantly, they showed how well they understand and can articulate how our Christian Faith should be put into action in our personal relationships and with the world in which we live.

Just to let you know about our Advent/Christmas worship:

Sunday 27th Nov at 6pm: Advent Sunday Candlelit Praise Service with Advent readings and traditional advent hymns. This is not the Nine Lessons & Carols - see below.

Friday 2 Dec at 7.30pm, Saturday 3rd Dec at 2.30pm and 7.30pm in St John's Church: Curtain Up Productions present: Christmas Journeys. A Christmas celebration and readings about journeys taken at Christmas. Tickets from our office £8 standard; £6 OAP/under 16s.

Sunday 4th Dec at 3.30pm In Loving Memory. A candlelit service. This service is for everyone who will miss their loved one(s) this Christmas and would like to light a candle in loving memory. Tea and refreshments after the service.

Sunday 11th Dec at 3pm in the Church Centre & Church: Messy Christingle. A very popular family occasion. It is a wonderful way for families to think about all the unhappy and children in the world and the work of the Children's Society. An excellent tea is provided!

St John's Church

Sunday 18st Dec at 6pm: Traditional Candlelit Festival of 9 Lessons and Carols

Christmas Eve:

6pm: Carols Around the Tree, a fun family service with carols and an 'Instant Nativity Scene'. A great family occasion but be early.

1130pm: Traditional Midnight Mass

Christmas Day 10am: Family Holy Communion

Please get in touch if you would like to have more details

With every blessing for Christmas and 2017 to you, your families and friends.

Trevor

Revd T Filtness

Vicar

St John the Baptist

Rowlands Castle

07785 568056

02392 410111 (Office)

Rowlands Castle Surgery

Surgery opening hours: 8:30 to 18:00 & alternate Saturday mornings 8:30 to 12:00.

GPs phone-in for consultations & advice 08:00 - 08:20 Mon – Fri - Tel 02392412309

Pharmacy opening hours: 8.30 to 18.00 & Saturday mornings 9:00 to 13:00.

(Pharmacy closed for lunch 13:00 to 14:00)

The Surgery situated at the tip of the green has been providing the village with GP services for decades. Our attached pharmacy opened in May 2010.

New patients welcome, pop in to reception & ask for the new patient registration form

12 The Green, Rowlands Castle, Hampshire, PO9 6BN

Tel: 023 9241 2846 Fax: 023 9241 3070 www.rowlandscastlesurgery.co.uk

St Hubert's Church



The Friends of Church of St Hubert, Idsworth Trust

by Roger Walker, Chairman

If there is any magic in this world, it is here - on our doorstep - in the ancient parish of Idsworth. Caesar's people have come and gone, likewise the people of Jutland, of Saxon Slesvig, of Denmark, and Normandy. St Hubert's church has stood for more than a thousand years: a place of refuge, of solace and of inspiration; a silent witness to the history of Wessex and the land we now call England.

St. Hubert's, 'the little church in the field', has witnessed many challenges: war, plague and neglect. It has been rebuilt, extended, modified and repaired many, many times. The current series of repairs is held up for lack of funds and its future as a place of worship is most uncertain.

Against this background, we, the farming community and a group of concerned families and individuals, have created The Friends of the Church of St Hubert, Idsworth Trust. The aims, described in the leaflet enclosed in this edition of the RCA magazine, are clear: to generate funds to continue the present refit, to explore the history of the valley in which we live and to safeguard the long-term future of this historic building for generations to come.

The leaflet is about recognising the importance of this treasure in our valley. It has significance as a silent witness to our history and as a monument to our predecessors from Ida's Enclosure, now Idsworth, Finchdean and Rowlands Castle, who took part in events, great and small, through British history.

If you have sensed the magic of this special place or simply have an interest in where we live and who we are, please join us as a Friend. The future of St Hubert's is in our own control. Your voice will count.

The 401 Challenge by Lorna Hancock

Many of you may have heard the name Ben Smith mentioned in various different places over the last year or so, but for those of you that haven't, he is the 401 Marathon man. On the 1st September 2015 he began one of the most challenging and rewarding experiences of his life.

He began a 'World Record' attempt to run 401 marathons in 401 consecutive days, around 309 different locations of the UK mainland.

After suffering from daily physical and emotional abuse through bullying when younger, the challenge was to raise both awareness of the issues of bullying in our society, along with £250,000 for two amazing charities dedicated to tackling bullying. The two charities are called 'Stonewall' and 'Kidscape'. Both these charities work tirelessly to support award winning initiatives which really get to the heart of bullying in our UK schools and society in all its forms.

On September 25th 2016, Ben's 391st Marathon passed through Rowlands Castle, and we took the chance to meet him with our children, to support and join him for a mile of his epic journey. We all felt very lucky to have had the chance to run alongside this really amazing man. He was truly inspirational!!! He was so nice, with so much time for everyone, and during the mile we ran with him, he ran at the back with us, and really made an effort to chat to, play with and encourage our children (aged between 3 and 5). Our youngest daughter, Autumn Hancock states "Ben's really REALLY funny" when people have asked her about her little running adventure.

Ben has now finished his challenge, although is now partaking in a very long cool down process. He has gained a world record, run 10506 miles, raised over £291,000 for charity and worn through 22 pairs of trainers! Over his journey he ran with 9485 members of the public, and I feel very proud and lucky to have been one of them.

The attached picture is of Runner Ben Smith, with Amber Hancock, Amelia Blacoe and Olly Banachowicz (all from Rowlands Castle), outside Tea on the Green where he had stopped for his lunch.



Alton Abbey and Rowans Hospice

Advent Concert in The Abbey Church of Our Lady & St John, Alton Abbey,
Beech, GU34 4AP
Saturday 10th December 2016 19.30

Tickets £5.00 for mulled wine & nibbles after the Concert
For Tickets contact Br John OSB guesthouse@altonabbey.com
Alton Abbey, Beech, Alton, GU34 4AP
Tel – 01420 562145



Havant & Rowlands Castle Support Group Event Update – October 2016

Many thanks for the support you have given to our recent events.

The Golf Day at Corhampton Golf Club on Thursday 6th October had 25 teams entered and raised £1,160.38.

Our final event for 2016 is:

Friday 25th November – Skittles evening at Southwick Park Golf Club

The first event planned for 2017 is:

Thursday 16th March – Ladies Luncheon at Rowlands Castle Golf Club

Di Cose

Tel: 02392 252369

on sale

The
Rowlands Castle

Photographic Calendar



ROWLANDS CASTLE



2017 CALENDAR
Our Village & surroundings

In your local shops or

email Pat Carter [patcarter123@hotmail.co.uk]

Rowlands Castle Good Neighbours



What do Good Neighbours do? by Ian Hewitt, Chairman

Our normal work of driving people to hospitals, shopping etc continues although a few regular clients no longer need our services at present so the tasks undertaken over the last few months has dropped slightly. But after losing a few drivers during the Spring we are grateful for new volunteers. Thank you Caroline, Gillian and Peter. Older volunteers are encouraged so that we continue and trust that it will do so when we, too, need the service.



The village Good Neighbours is one of about 120 throughout Hampshire. In July the county celebrated its 40th year with a royal tea party in the grounds of Winchester cathedral attended by HRH Princess Alexandra. Our two representatives were Barbara Bowers and Joan Drinkwater, both original volunteers when the village's group started 27 years ago. Barbara and Joan both met and talked to the princess during the afternoon. Some readers may have read the full 2 page centre spread in the September edition of Pompey Chimes, the Portsmouth diocesan monthly magazine.

In mid October we held another coffee morning in the Church on the Green - a chance for all involved to meet and to enjoy the church's generous hospitality. The recent planned Thank You tea for all volunteers has now been deferred until mid November – our opportunity to thank all volunteers for their work throughout the year.

If you are able to spare an hour or so each month and have a car in which you could help, please let me know by phoning the number below.

If you need any help – or know of anyone who may need help - for example, with:

Transport to hospital, library or shopping ?

Collecting a prescription from the doctors ?

Transport to a club or social event ?

Any other neighbourly activity?

then please remind them of our help line - 0845 519 6641



Please give at least 48 hours notice, particularly if phoning at weekends.

Gardening Club

Coming events by Gordon Charlesworth, Chairman

In addition to the first Spring Show (pictured below) we have enjoyed visiting local gardens, hearing stimulating talks and of course the Annual Horticultural Competition at the Village Fair.

To come this autumn and winter we have

- Gardeners Question Time
- Wolbeding Garden (Head Gardener)
- “Making the most of what you have”
Top trees for small gardens

And of course the Christmas Party!

Then on Saturday 8 April 2017 our second Spring Show- so now is the time to get those bulbs and spring plants going!

We meet on the third Wednesday each month at 7-30 at The Church on the Green. You don't have to be a member to attend.



The Summer at Rowlands Castle Golf Club by Peter Klepacz PGA Professional

Golf at Rowlands Castle has certainly been busy this year, with a varied and competitive golfing diary, with our weekly competitions on a Saturday regularly attracting over 200 competitors, and a variety of Trophies, cups and shields to compete for.

The Club's signature event is the Dupree Trophy, an open event played over 3 days in August, with competitors coming from as far as Derbyshire and New Zealand to try and qualify for the knockout stages. This year it went down to the final putt of the 36 hole final to decide the eventual winner who was Shaun Maskell from Bognor Regis golf club. Our club championship this year was won by Billy McKenzie, who was home for the summer from his golfing scholarship at William Woods University in America. Playing off a handicap of plus 3, Billy has not only had an all-conquering year in the states winning 5 collegiate college titles, but has successfully represented the club in many national and international events, including victory in the prestigious Tillman trophy at the East Sussex National golf club. The ladies club championship was won by Jackie Cushion, who has recently retired from her job as assistant secretary at the club.

October traditionally signifies the end of the club's main competition season culminating in members competing for the Quaffers trophy. This is followed by a presentation evening where



all the trophies, cups and medals from the season are received by the winners.

For those golfers at the club who prefer their golf to be slightly less competitive, the club has also hosted many varied and informal golfing events this year. Although keenly contested, these place an emphasis on fun and participation and are often accompanied by a meal and a drink or two afterwards.

Within the club, we have different sections that are all very active, including Seniors, Ladies, Juniors and Men's. All of these have both competitive and friendly golf and played by golfers of

all standards. These sections play a number of matches against other local clubs, often in leagues and knockouts, and this year our Men's county sevens team, the ladies Stoneham team and the Juniors Southdown league team have all achieved notable success.

Many people do not realise that as well as the golf course, we also have fantastic function and clubhouse facilities. We regularly welcome many local organisations who take advantage of these when it comes to hosting their events, parties and meetings. For the non-golfers in the village, there is also an opportunity to take out social membership. This enables you to not only use our restaurant and bar facilities but also attend our many social events. In the past few months, the club has had a very busy social diary, with the standout events being the Summer party in July and the recent Abba tribute night. As always we are planning to celebrate Christmas in a big way at the club, with many social events planned, including Christmas parties, Carol concerts and lunches along with our New Year's Eve celebrations, so now would be a great time to think about joining as a social member.



The club are very proud of our active junior section, and along with many internal junior competitions we enter teams in a number of local leagues and host friendly matches, with the emphasis very much on participation and enjoyment. As a club we are actively trying to increase the numbers of junior golfers, and as the club's professional I am currently holding junior group lessons on a Sunday morning, which are free and open to everyone to attend.

This year I have also hosted a number of free Ladies taster sessions where over 100 ladies have sampled the game, and I am pleased with how many have now gone on to become regular golfers. As well as the taster sessions and clinics, I am available for golf lessons, which cost £15 each or I do a course of six lessons for £75, which are available to everyone and not just members, and lesson vouchers also make great Christmas presents.

On the subject of Christmas, the club also have a large well stocked Golf shop, which I run with my son Jimmy and we have everything in stock that a golfer would need, from clothing, tees and accessories to the latest clubs from the biggest manufacturers. So if you are in need of a golfing gift then why not pop in and see us, where we will be on hand to give you all the necessary help and advice.

If you live in the village and have never been to the club, why not pop in and see us, we would be happy to show you around our facilities. If you would like any more information on golf, lessons or the shop, then I can be contacted on 023 92 412785, or my website is www.peterklepaczgolfshop.com, or why not follow me on:

twitter: [@rowlandsproshop](https://twitter.com/rowlandsproshop) or facebook: [rowlandsproshop](https://www.facebook.com/rowlandsproshop). For more information on memberships and using the club facilities Keith Fisher the clubs secretary/manager can be contacted on 02392412784, or by emailing: manager@rowlandscastle.co.uk

DACD (Rowlands Castle) Cricket Club

2016 Season Report

by Jonathan Law

Eagle eyed readers will have noticed the absence of the early season report in the last magazine. To be honest there was very little to report. The fixture list comprised 20 fixtures to the end of June but only 8 were played due to the weather (we subsequently learnt that June was one of the worst on record for rainfall). With only one win and heavy losses to East Meon (again) Clanfield (yet again) and losing the Bill Young Cup to the Tax Office for the first time in 5 years I decided not to trouble the readership with our travails.



The season picked up at the beginning of July with our tour to Cardiff. A return fixture was arranged with Barry Island CC on the Friday where they narrowly won by 8 runs avenging their defeat from 2013. It should be noted that our performance was in no way affected by the tour and tasting session at the Wadworth brewery en-route to South Wales. Post-match hospitality at the Barry West End social club coincided with watching the epic Wales v Belgium Euro quarter final. On our return to the centre of Cardiff later that night celebrations were in full swing and it would have been the height of rudeness not to join in!

The next day we decided to let the professionals show us how to play and went to watch England vs Sri Lanka at the SWALEC and saw a comfortable England win. It must have worked as the following week we recorded a good win against Sweaters at the recreation ground. Veteran leg spinner Ray Smith with 3-8 off 3 overs helped restrict Sweaters to 84 in 20 overs and a quick 26 (retired no) from Will Andrews (son of skipper Guy) saw us to a 5 wicket win. It should be noted that Will has the dubious honour of being the first DACD member to take to the field with a man-bun!

We followed this with yet another 3rd place at the East Meon sixes (one day we will reach the final) and a close defeat to Petersfield. Our next midweek game against Skulking Loafers in Chichester saw a vintage fielding performance with 6 outstanding catches and a direct hit run out leave us with a target of 131. We cruised to a 7 wicket win with the highlight being a 69 run unbeaten match winning partnership in which your correspondent contributed 1 run assisting Meredydd Hughes to 66 not out in the process. We also cleaned up in the post-match raffle back in the pub.

Two further wins against Peartree and Portsmouth Academicals were followed by a loss against MCC before we made the trip to Hythe and Dibden. For a while we have been struggling to play competitive cricket on a Sunday but this time managed to post a decent 215 off 40 overs with half centuries from Colin Lord, Andy Robinson (no) and 26 (no) from Euan Robinson (batting with his dad). The Hythe and Dibden reply was led by their Aussie overseas player scoring a century but lack of support from the rest of his team saw them dismissed for 204 and a very satisfying win against a good club team.

August continued with another good win (at last) against Clanfield at the recreation

DACD (Rowlands Castle) Cricket Club

ground. Meredydd Hughes led the way with 86 not out in a total of 163-3 off 40 overs. He followed this with 3 wickets ably supported by the rest of the bowlers as Clanfield collapsed to 110 all out for DACD to record their first win over our local rivals for some years.

As we moved into September the season finished with a close defeat away to Bishops Waltham, the highlight being club stalwart Paul Maidment's highest score of 44. This was followed by our traditional season closer at Lavant where a spirited rearguard batting performance by the lower order took DACD to a respectable draw in a timed game.

The club has completed its end of season re-seeding of the square, held our Black Tie Ball with 50 plus attendees at the Bat and Ball and now just have the post season cultural European trip to Lisbon to look forward to and round off the year.

2016 Playing Record

Played 22 Won 8 Lost 12 Drawn 1 Abandoned 1 Cancelled 15





Sales | Repairs | Service | Parts

SOUTHERN MOWER SERVICES

New and used lawn mowers, trimmers, hedge trimmers, chain saws, ride on mowers, leaf blowers and more



Our highest priority is service to our customers



HAYTER

STIHL

Tanaka
POWER EQUIPMENT

FGM
Claymore

Husqvarna

Unit 4 Hillside Industrial Estate, London Road, Horndean, Hampshire PO8 0BL
Tel: 02392 592954 Email: info@southernmowerservices.co.uk
www.southernmowerservices.co.uk



Divorce, Mediation
and Family Law
Specialists
Making separation manageable.

We are compassionate, professional and able to offer you a personal service to achieve the best possible outcome for you and your family.

Both Lisa and Kristy are trained mediators and collaborative lawyers so are able to offer non-court options. Your first consultation with us will always be at no charge – we believe that it is important that you have absolute confidence in our services before we work with you.

We are transparent about the costs you are likely to incur from the outset. There will be no hidden costs and we offer various payment plans.



Tel: 01243 373165 • Email: info@lkfamilylaw.co.uk • www.lkfamilylaw.co.uk

Fiscal House, Emsworth, Hampshire PO10 7JE



Drews Farm - Rowlands Castle/Forestside

Every 3-4 months we sell mixed boxes of Beef and Lamb/Hogget. The animals have grazed solely on the local chalk pastures. They are not fed on any supplements, additives or prophylactic antibiotics. We try to produce the best tasting, healthiest beef and lamb without compromise for our family and you.

The beef is hung for 28 days. The boxes are 7-10kg of mixed cuts.

To reserve your box or to put your name on the mailing list please email : annafawcett@mac.com

Or call : 07775641638 Visit our website for further information: www.drewsfarm.org



An Excellent School

ISI Inspection Teams judge The Portsmouth Grammar School as 'excellent'



- Pastoral care is excellent
- Quality of teaching is excellent
- Pupils benefit from an excellent curriculum
- Pupils' academic and other achievements is excellent

Nursery | Infants | Juniors | Senior | Sixth Form

Discover what makes The Portsmouth Grammar School such an exciting place to learn, at every age, at our
Open Morning on Saturday 24 September 2016, from 9:30am.

To find out more please call us or visit
023 9236 0036 | www.pgs.org.uk



**THE
PORTSMOUTH
GRAMMAR
SCHOOL**

**PROFESSIONAL PLUMBING
& HEATING SPECIALISTS**

A. A. BARRETT

**51 Hatchmore Road
Denmead
Waterlooville
PO7 6TE**

**Tel: 023 92258057
Mobile: 07802321269**

**Tel: 023 92258057
Mobile: 07802321269**

Local businesses are welcome to advertise in RCA Village Magazine.

It's low cost and your advert will be seen by every household in

Rowlands Castle, Finchdean and the surrounding area.

For more information contact **Prue Amner Advertisement Manager**

RCA Village Magazine Email: adverts@rowlandscastle.com or phone Tel 023 9241 2459

Copy required by March 18th, June 18th and October 18th



Interior Design Service including handmade bespoke curtains, roman blinds, loose covers and headboards. Stunning fabrics and contemporary seating available.

Website: www.ameliawarreninteriors.com

Email: studio@ameliawarreninteriors.com

The Paddock, Drayton Farm, East Meon, GU32 1PN

01730 823618

Free Quotations

N • K • S

Building & Landscapes

Drives • Patios

Stonework • Drainage

Garden Walls • Building Maintenance

Alterations and Renovations

Free Estimates

Nigel Sykes

023 9241 0118

07788 126 547

Please keep this leaflet in a safe place
for when you need my services.

MORRIS BUILDING SERVICES

Shaun Morris

113 Finchdean Road, Rowlands Castle, Hants, PO9 6EN

RENOVATIONS

ALTERATIONS

SMALL WORKS

ALL ASPECTS OF PROPERTY MAINTENANCE AND
REPAIRS, INTERNAL AND EXTERNAL

ROWLANDS CASTLE

(023) 9241 3130

FREE ESTIMATES

07941 742598

MacDonald Oates LLP SOLICITORS



Leading Client Service

Residential Property

Family Law

Mediation Services

Wills, Probate & Trusts

Litigation & Dispute Resolution

Employment Law

Company & Commercial

Commercial Property

Petersfield Office

Tel: 01730 268211 | Fax: 01730 261232

Midhurst Office

Tel: 01730 816711 | Fax: 01730 816016

www.macdonaldoates.co.uk

A photograph of two mountain bikers riding on a dirt trail. The biker in the foreground is wearing a blue and red jersey and a helmet, leaning forward. The biker in the background is wearing a yellow and black jersey. The sun is low in the sky, creating a lens flare effect. The background shows a valley with a lake and mountains.

We make print and
mailing ***nice and easy.***

So you can focus your energy
on more important things.

Everything you need for your
direct marketing campaign
all under one roof.

WE CREATE
WE PRINT
WE DELIVER

|T| 023 9233 4900 |E| enquiries@bishops.co.uk
|W| bishops.co.uk



Print. Perfected

Nic Radcliffe

HEATING • PLUMBING • BATHROOMS

I can help with all your boiler, heating, plumbing and bathroom needs.
And I live right here in the village, so can call round at short notice.

**Here's my number.
Please keep it in a
safe place.**

07905 908143

www.nicradcliffe.com

nic@nicradcliffe.com



City & Guilds
Qualified



Tailormade Holidays, Tours & Experiences

Portfolio
TRAVEL

Experts in crafting exceptional holidays

5% OFF Tailormade Travel for Village Magazine Readers

www.portfoliotravel.co.uk

023 9298 9720



DITCHAM
PARK SCHOOL



Just 20 mins
from Havant

Just 10 mins
from Petersfield

*Where every child is
known and valued*

Stunning South Downs Location
Excellence in Education from 4 to 16 years

www.ditchampark.com

Call us on: 01730 825 659 Petersfield Hants GU31 5RN

fabulous flooring with a perfect fit!

visit our website
to find out more
waterloovillecarpets.co.uk

Service is the secret of satisfied customers and satisfied customers are the secret of our 49 year success.

- Fabulous Carpets from Greendale, Brintons and Ulster
- Crucial Trading/Alternative Flooring Specialist
- Fabulous Vinyl Tiles from Amtico, Karndean & Vusta
- New Click only Vinyl Planks & Tiles from Karndean
- Fabulous Quickstep Laminate Flooring
- Oak Floors – Engineered Planks and Solid Click
- Fabulous Bamboo, Cork and Sustainable Flooring
- 12 MONTHS INTEREST FREE CREDIT on all products



We promise you a flooring that fits your requirements, fits your budget and fits beautifully into your home. Please call in, anytime.

A pleasure to come home to.....

31 The Square, Petersfield, Hampshire Telephone: 01730 262223/267381 Fax: 01730 267394
email: sales@waterloovillecarpets.co.uk waterloovillecarpets.co.uk

Handyman

Household maintenance

Home Maintenance
Carpentry
Door Hanging
Repairs
Painting / Decorating

Fencing
Jet Washing
Gutter Cleaning
Soffit Cleaning
Shelving

*For all the jobs you can't or don't want to do
Call Alan on 07580 067190 or 023 9241 2797
for a free no obligation quotation
Email: alan@handyman66.com*



Do you have arthritis?

**Would you like to improve your
fitness, strength, mobility, posture
and balance?**

- Exercise classes and home visits
- Tailored to your needs
- All ages and abilities welcome
- Classes in Emsworth, Havant and Chichester
- Free Taster Class
- Run by Chartered Physiotherapist Juliette O'Hea



02392 413885 or 07974 238787
www.arthritisfirst.co.uk
physio@arthritisfirst.co.uk

PILATES & FITNESS YOGA CLASSES in ROWLANDS CASTLE

Pilates

Monday, Tuesday &
Wednesday Mornings.
Tuesday & Wednesday Evenings

ALL LEVELS WELCOME

PRIVATE STUDIO

LEVEL 3 EXPERIENCED INSTRUCTOR



FITNESS YOGA

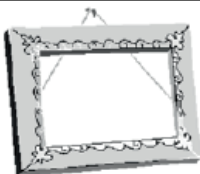
**INCORPORATES
STRETCH, STRENGTH,
AND YOGA POSTURES.**

A STRONG ACTIVE PRACTICE



Monday & Friday Morning & Monday Evening

Please contact: Stacey Merritt
BSc Physiotherapy
07957 215459
merrittstacey@hotmail.com



Petersfield Framing Studios

Picture Framing by Andy Parks, MA, G.C.F.

- ◆ Collection and Delivery Service in the Rowlands Castle area.
- ◆ Guild Commended Framer (G.C.F.) with 23 years experience.
- ◆ Over 400 different mouldings and 200 mount boards to choose from.
- ◆ Very competitive prices.
- ◆ Picture framing tuition also available.
- ◆ Tel: 01730 269926.
- ◆ Visit: www.petersfieldframing.co.uk

"We Collect and Deliver Your Picture Framing"

microsomma



IT Support for Home & Small Business

www.microsomma.com

Please see my website for local recommendations...

Reliable & Local

Available 7 Days

Qualified & Experienced

0845 0170772

07796 346526

david@microsomma.com



"OFSTED RATED OUTSTANDING"

ROWLANDS CASTLE ST JOHNS CEC PRIMARY SCHOOL
Whichers Gate Road, Rowlands Castle
Hampshire PO9 6BB

Monday to Fridays 8.30am ~ 4.30pm
For children aged 2-5 years

Early Years Foundation Stage curriculum
For a prospectus, or to arrange an informal chat, please contact:

Lorraine Bryant ~ Manager on 023 9241 2095

"The experienced and enthusiastic staff are skilled at making learning fun".

Ofsted 2015

Registration Charity Number: 1088132



Elizabeth Turner Soft Furnishings Ltd

Hand-made quality curtains, Roman blinds, cushion covers and other soft furnishings. We also supply curtain poles, tracks, tie backs & other curtain accessories, plus provide a fitting service.

01243 389939 / info@elizabethturner.co.uk

www.elizabethturner.co.uk / Find us on facebook!



Craniosacral Therapist Louise Toone RCST BCST

Have you thought about trying Craniosacral Therapy?

This mindful therapy can help people of all ages, from the very young to the very old. It helps with physical difficulties, such as recovery after injury and surgery.

Craniosacral Therapy helps relieve stress symptoms such as emotional over-whelm, headaches and insomnia. I am qualified to treat Post-Traumatic Stress Disorder. Treatments are gentle and relaxing, helping you find balance.

Craniosacral Therapy is so safe it is suitable for Pregnant Women, Mothers and Babies. It can aid recovery after birth and improve babies' feeding and sleeping patterns.

I offer convenient appointment times in Rowlands Castle and at Hamblin Hall, Bosham. Find out more by visiting my website at www.gentletouchcst.com

Contact Louise on 02392 413278

Email: louise.toone@btinternet.com



S.Roberts Upholsterers

Professional upholstery.

Contract and domestic - any size work undertaken

We provide a free measuring and quotation service and you can find us on Checkatrade.com

Checkatrade.com

Call on **01243 377200**
for all your upholstery
requirements

www.re-upholster.co.uk



Unit 10, Palmers Road Industrial Estate, Emsworth, Hants PO10 7DH

CACI

NON SURGICAL SOLUTIONS

Karyn Westmore - CACI Specialist

m: 07769 183908 w: beauty-onthemove.co.uk

e: karyn@beauty-onthemove.co.uk



Using non-invasive micro current, CACI can re-educate, tighten, tone & gently lift facial muscles & improve the appearance of the skin

CACI treatments in the privacy of your own home or in my treatment room, West Stoke, PO18 9AA. Whether you are looking to book your first course or are already on monthly maintenance, contact me to find out about my bespoke treatments and course offers



BUILDING CONTRACTORS

COMMERCIAL, INDUSTRIAL and
MAJOR DOMESTIC WORKS

Joinery Mill, The Green, Rowlands Castle,
Hampshire. PO9 6BW

Tel 023 9241 2741
www.winnicott.co.uk

Established
1904

Fax 023 9241 2212
mail@winnicott.co.uk



Austens

Petworth

Tel: 01798 342104

Billingshurst

Tel: 01403 782963

Midhurst

Tel: 01730 815979

Alton

Tel: 01420 85115

Emsworth

Tel: 01243 376852

Romsey

Tel: 01794 512141

Rowlands Castle

Tel: 02392 412332

homehardware

Not just paint!

WE COVER EVERYTHING!

- ✓ GREAT SAVINGS ON MANY RANGES
- ✓ FRIENDLY EXPERIENCED STAFF
- ✓ **OPEN SUNDAYS**

ICI Dulux
PAINT MIXING CENTRES



www.rowlandshomehardware.co.uk

POST OFFICE

OPEN 7 DAYS A WEEK

CHILDRENS LEARNING CENTRE

RATED OUTSTANDING BY OFSTED 2011

Member of; 4Children

125 New Brighton Road, Emsworth

EDUCATIONAL NURSERY AND DAY CARE SERVICES

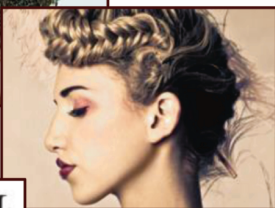
OPEN 50 WEEKS A YEAR 8.00AM - 6.00PM

We offer full time and term time care for children from 0 – 5 years, hours and days to suit your requirements. Also we provide holiday activities for children 3 – 5, and an after school club

Telephone: 01243 372015 or email: childrenslc@btconnect.com



JOICO



TIGI



02392 412 606



info@stylestudio-rowlandscastle.co.uk

Your local Hair and Beauty Salon

Recommended by The Good Salon Guide, we're situated in the heart of Rowlands Castle.

Offering a professional portfolio of hair and beauty treatments by a team of experienced hairdressers and beauticians.

- Hair for ladies and gents
- Beauty
- Special packages
- Late appointments available by request

Contact us: 3 Links Lane, Rowlands Castle, Hampshire, PO9 6AD

Find us online: stylestudio-rowlandscastle.co.uk



Legal Advice You Can Trust

George Ide LLP Solicitors has a well established and highly regarded private client department which deals with all aspects of Wills, Probate, Trusts, Court of Protection and Powers of Attorney.

We can advise you on:

- The preparation of a Will
- Obtaining Probate
- Executor Responsibilities
- Investment Advice
- Post Death Variations
- Inheritance Tax Planning
- Trusts
- Lasting Powers of Attorney
- Court of Protection Issues

The breadth and depth of the expertise of our team is such that we offer private individuals and families a tailor made personal service of the highest quality.

We provide specialist advice to manage the personal affairs of individuals at every stage of their life. Our experienced Solicitors have a sound understanding of the issues, which can affect your personal wealth and family relationships and will take all of the necessary steps to protect your interests every step of the way.

Contact Ian Oliver on: 01243 812421
ian.oliver@georgeide.co.uk
www.georgeide.co.uk

On your side



We'll get you moving

**Successfully selling and
letting in your area**

**Free Valuations, Free EPC,
Competitive Fees**



14 The Green, Rowlands Castle, Hampshire PO9 6BN | **023 9241 0014**
sales@hpd-estates.co.uk | lettings@hpd-estates.co.uk | www.harrisparkesanddrake.co.uk



HallsGarage

GARAGE SERVICES

8 The Green, Rowlands Castle, Hampshire PO9 6BN

SERVICING ALL MAKES



MOT TESTING

MOTORCYCLE MOT TESTING

LOCAL BREAKDOWN SERVICE

FREE COLLECTION AND DELIVERY IN THE AREA



PERSONAL ATTENTION FROM YOUR INDEPENDENT LOCAL GARAGE

t: **023 9241 2244** e: **he.hall@btconnect.com**

www.hallsgarageservices.co.uk