



Rowlands Castle Association

Autumn 2014

Village Magazine

www.rowlandscastle.com



**Extra Mech
(Services) Ltd.**

**YOUR VILLAGE PLANT HIRE
COMPANY SUPPLYING A FULL
RANGE OF GENERAL PLANT**

**SEE OUR VAST RANGE
ON OUR WEBSITE
WWW.EXTRAMECHSERVICES.CO.UK**

**OR
CALL AND DISCUSS ON
023 92 412888**





ROWLANDS CASTLE ASSOCIATION

Village Magazine

Autumn 2014

Message from Chair.....	4
RCA Committee.....	5
RCA News.....	6
Localism.....	7-8
U3A.....	9
Village News.....	10-11
Letter to the Editor.....	12
Women's Institute.....	13
Local Council News.....	14-16
District Council News.....	17-18
WRAGS.....	19
1stRowlands Castle Scouts.....	20-21
Photography club.....	22-25
Craft Fair.....	26
Gardening Club.....	27
Tennis Club.....	28-29
St John's School.....	30-33
Painting Society.....	36
Health Care.....	37
Cricket.....	38-39
Hedgehogs.....	40
Children's Christmas Party.....	41
St John's Church.....	42-43
St Hubert's Church.....	44-45
Church on the Green.....	46
Good Neighbours.....	47-48
Domestic heating advice.....	49
The War Memorial Jutland.....	50-51
Doctor services/Women's Fellowship.....	52

The Village Magazine is published three times a year by the RCA. The aims of the RCA are to act as a channel of communication for the Village, to conserve the character and to enhance the life of the Village. **If you would like to make a donation to magazine printing costs there is a collection tin in the hardware store**

Editor: Kevin Connell , 19 Mallard Road, Rowlands Castle, PO9 6HN

Cover picture: Peter Langdown

Rowlands Castle Association

Message from the chairman of the RCA

by Kevin Connell Chair, RCA

First I welcome onto the RCA committee David Hooper. With several members of the committee due to retire in March he joins at a good time for the continuity of the RCA and we are very grateful to him for volunteering. We say farewell and thanks to Jane Collins who has had to step down due to personal commitments. We need more committee members for next year; if you are interested please contact me.

I must congratulate St John's School for initiating the Rowlands Castle Scarecrow Trail. There were lots of excellent entries and the judging must have been very difficult. The generous supply of cakes and refreshments at the prize giving were much enjoyed by those who attended. Let's hope the enthusiasm continues and the Scarecrow Trail becomes a yearly event.

The Mosaic was unveiled at a ceremony on September 19th. It represents events that took place over the weekend of the Diamond Jubilee and will be a lasting reminder of that happy time.



RCA Scarecrow

Photo: Fiona Charlesworth



Mosaic unveiling

Photo: Ann Page

Rowlands Castle Association

Your RCA Committee



Kevin Connell (Chair)
9241 3857
chair@rowlandscastle.com



Fiona Charlesworth (Secretary)
9241 3865
secretary@rowlandscastle.com



Sharon Broom (Treasurer)
9241 3592



Sue Morrison



Martha Dombey
9241 0030



David Hooper



Gillian Lovegrove (Webmaster)
9241 2426
webmaster@rowlandscastle.com



Sue Leonard
9241 2108



Deborah Richards

RCA News

RCA Quiz

by Sue Connell Quiz Inquisitor

Another successful brainstorming event! There was a great turn out for the annual RCA Quiz Night which took place this year on Saturday 18 October in the Parish Hall. The Hall was full as 11 teams did battle to win one of the four prizes on offer. First prize was six bottles of wine, second prize was six boxes of Maltesers, third prize was a box of chocolates, and there was even a fun booby prize for the losers!

The quiz questions were set by Sue Connell and marked by Kevin Connell, and contained a Film Picture Round, a Musicals round, an A to Z round, and eight other subject rounds. Our resident Quiz Master, Dave Richardson, made sure everything ran smoothly, and entertained everyone with extra snippets of knowledge related to the questions. The scores were very close at the end, which made for an exciting and hotly contested finish! At half time there was a greatly anticipated meal of curry, prepared for and delivered by The Taste of India in the village. This was a change from the usual fish and chip meal and was very well received.

There was also an excellent raffle, which took place before the final scores were announced, and included donations from the village of:

Orchid in pot - Wyevale Garden Centre, Havant
Bird feeder and food set - Rowlands Castle Hardware Store
Two bottles of wine - Londis, Rowlands Castle
£25 token for food and drink - The Castle
£20 token for hair and beauty - Style Studio Hairdressers
Entry for 2 adults and 2 children to Staunton Park - Staunton Park
Two tokens for an Afternoon Tea for 2 - Tea on The Green café
Haunch of venison - Stansted Farm Butchers shop
£10 voucher for the Taste of India on The Green - Taste of India
Oil paint set - Craft shop, Rowlands Castle

Other prizes donated by committee members included scented candles and 2 hyacinth growing kits from Martha Dombey, a tin of Quality Street from Fiona Charlesworth, and bottles of wine from Sue Morrison and Sharon Broom. A box of chocolates was also kindly donated by Paul Marshman.

The profits from the ticket sales and the raffle will this year go towards a community defibrillator for the village.

Many thanks to everyone who came along and ensured that this was a fun and worthwhile evening. See you all next year!



Photo: Fiona Charlesworth

Housing crisis figures: What's an error of 11,885 between friends?

by Michael Daysh

My last article for this magazine was in the form of a letter to George Hollingbery MP, asking him to explain why the government is forcing us to take great numbers of houses despite assurances that they would not do so.

I did not get a reply to my letter, so I went to his meeting of 450 constituents in Horndean School on 17 October, and I asked him directly why the Prime Minister had misled the country. This led to the headline in the Horndean Post “CAMERON - stick to your TV pledge”.

Also at that meeting were several members of our Parish Council, and Mr Pickering's penetrating questions were reported with appreciation in the Horndean Post.

I have written again to Mr Hollingbery as follows:

23 October 2014

Dear Mr Hollingbery,

Thank you for holding your meeting at Horndean School on 17 October, and for allowing me to ask a question.

On a point of detail which I raised at the meeting, I can confirm that the housing targets in the Local Plan are overwhelmingly to allow for the deliberate attraction of inward migration to the area via large scale speculative building, and not for the evolving needs of local people and communities.

You may, for example, be interested in the *East Hampshire : SHMA and Local Housing Requirements Study*. The study has a range of scenarios, all of which show inward migration as being the overwhelming cause of the projected population growth in our District.



Localism

For example, the Baseline Scenario projects a population increase of 11,706 people over the period 2011 to 2028 consisting of a reduction through natural change (i.e. the genuine local demographic) of **179** people and net in migration of 11,885 people.

Since you seemed to believe that NO inward migration was included in the housing targets, and certainly that 70% was wildly wrong, since you said that the reason for all the building is a housing crisis in this area, and since the whole thrust of government publicity about the new planning system is that house building will be to meet the needs and aspirations of the communities, I therefore wonder if you will now support a significant reduction in the housing targets across East Hampshire?

Finally, I wrote to you before the meeting and suggested you might allow a dissenting voice on the panel. In the event, everybody on your panel seemed to be in agreement with you. In my opinion, this was a lost opportunity: it is better to allow issues to be debated.

Therefore, would you now be amenable to the idea of reconvening, but this time allowing a full debate, with you speaking for government policy, and others from the local communities making you aware of their opinions?

Yours sincerely,
Michael Daysh

We want to hear from you.



Do you have something to say? The RCA Village Magazine belongs to the whole Village and serves as a channel of communication between villagers. If you have a point of view, write a letter and we'll publish it.

Simply write to Editor, RCA Village Magazine, 19 Mallard Road, Rowlands Castle, Hampshire PO9 6HN. Email to editor@rowlandscastle.com

U3A Programme by Kevin Connell

For more information about the activities running in the U3A come to the Monday meeting 14.00 in the Parish Hall, third Monday of each month or email u3achairman@rowlandscastle.com. The Rowlands Castle U3A is intended for anyone not in full time work. The programme of presentations until May 2015 is as follows:
Visitors very welcome £2.00 per meeting.

Nov 17th Gordon Aspey,
Gordon who was himself born in the workhouse, will talk about The Foundling Hospital, The last of the Coram Foundlings, and will bring copies of his book to sell

Dec 15th 1st Anniversary Celebration and Christmas tea

2015

Jan 19th Hampshire & Isle of Wight Air Ambulance

The talk will concern the day to day work of this amazing charity and their lifesaving emergency service

Feb 16th Andy Kendall with 'Owls about Town'

Andy will bring some of his owls and tell us all about them. Close encounters a possibility!

March 16th Dr Gill Clarke

The Warhorse Story from peacetime to service in the First World War

April 20th John Sandy

My Time Inside! Tales from a Prison Governor

May 18th Christine Ames

A glimpse through the door of No 10! Christine was the youngest assistant to work under PMs Wilson and Heath

In July 2014 we had an outing to Blenheim Palace. In July 2015 we are planning another outing. We are also looking at the possibility of a U3A dinner party.



Village News

Please do not blame the dog

Alan Eyers Vice President RCA

I attended the last Parish Council meeting, because a topic of particular interest was scheduled for general discussion, that of ‘dog fouling’ in the village but on the Recreation Ground in particular.

There have been more than a few complaints about the number of occasions ‘dog mess’ has been found on the grass and or surrounding areas. A member of Castle United Football Team was present; he explained they had to check the playing area before every match to ensure there was no ‘mess’ to be picked up. Children & grown-ups play regularly over the weekend and I am sure there are practice sessions also at other times. There is of course a health risk; to children in particular, from coming into contact with these doggy deposits, especially if there are cuts or grazes, a common hazard for playing the game. I should imagine the Cricket Team must have similar concerns.

At the meeting, several people mentioned they had seen dog owners arrive by car, open the door and let their dogs out to run around, while still remaining in the car or standing nearby.

There are of course several blind spots, from the Car Park where the owners cannot see if or where their dog may do their ‘business’ so have no opportunity of picking it up if they do!

I am sure this is not the only reason why there is unpicked-up mess; a free running dog will leave their deposit as when they need to. If a dog is on the lead, then there is obviously a chance to pickup and deposit the bag in one of several bins in and around the recreation ground.

The recreation ground is a well-used facility, football, cricket, children’s play areas, keep-fit equipment, tennis courts, plus of course a dog walking arena. There is a risk that the latter could be withdrawn with a ban on dogs being allowed / banned from the ‘Rec’. This would be a disappointing thing, should it come about. I would urge ALL dog owners to be vigilant in picking up their dog’s deposits, they are of course only doing what comes naturally to them, they are not to blame here! Similarly ‘deposits’ are not confined to the Rec. The pavements in the village also suffer from the same problem, this is where the dog is much more likely to be on a lead, so there can be no excuses of ‘not knowing’.

As ‘responsible’ owners, we make sure we never leave home without a few doggy bags with us. Whether we are walking in Stansted, around the village or around the Rec. I understand from the meeting a large sign will appear on the Rec shortly, encouraging all to pickup and deposit in a convenient bin. With the maxim ‘if you abuse it, you will lose it’, I would encourage all dog owners & walkers to act responsibly, pick it up, please. Let’s keep open the Recreation Ground to all users, respect other users and their concerns about the potential health risks and general discomfort dog mess brings. Thank you.

The New Street Lighting in Rowlands Castle

Mark Seaman

As I'm sure you've noticed, new street lighting has been installed in most of Rowlands Castle. As a keen amateur astronomer I had looked forward to the new lights to cut down on the amount of light pollution we suffer. I have however been rather disappointed. The lights have reduced the amount of horizontal light spillage somewhat. This is illustrated by the photos which show the houses in College Close lit up less than originally. I used the same camera settings in the before and after images. However the light appears very harsh compared with the old, softer tones of the orange lights. The lights also reflect more off droplets in the air. I haven't been able to see the Milky Way from my back garden since the lights were installed.

The problem is that the new lights still throw a lot of light off horizontally into, for instance, upstairs rooms rather than down to the pavement and roads. This is a basic design fault. I notice that in Finchdean, the lighting installed along Ashcroft Lane has a much better design that really cuts down on horizontal spillage.

I'm also disappointed that the residents were not consulted before decisions were made on lighting. Someone from Hampshire County Council made a presentation at a Parish Council meeting in July but that was it - a presentation of their plans made without consultation. He was not prepared to discuss options for reducing light pollution such as switching off lights that are not wanted by local residents.

Apparently there is some hope that the better lighting in Finchdean will be installed in due course in Rowlands Castle - let's hope that's sooner rather than later!



Old Lighting

New Lighting

Letters

The Shipwrights Way sculpture in Finchdean **Anna Hume and Steve Collins**

You asked for our thoughts on the Shipwrights Way.

We live in Finchdean , overlooking the green and the new sculpture.

We do not approve; the sculpture is incongruous with the location, its scale is too big for our tiny green, yet too small for 'landscape' sculpture - AND IS SET ON AN ENORMOUS CONCRETE PLINTH.

The material used is unsympathetic to our rural location.

The form itself is unclear to those who did not know of the original binding tree.

MOST CRUCIALLY WE WERE NEVER CONSULTED ABOUT THIS !!!

This was similarly the case when the **HIDEOUS AND MONSTROUS** shelter and seat were built in the sheep pound, including the quite inappropriate gate with a goat on it!

Our little hamlet is being spoilt by ever increasing elements of urbanisation with road signs and markings, curb stones, ornate lampposts, an illegible sign post and yet more sign posts.

Presumably this is all paid for with our own money. What we really need is robust flood prevention. Many of our neighbours are seriously affected by this every year. Apart from the obvious damage from water ingress, it is unthinkable that some of the elderly residents are expected to use a portaloo.

Who makes these decisions and why do they ignore our real needs ?

Well you did ask!

Editor's note

This is the second letter concerning the sculpture in Finchdean. I have also had a number of negative comments about it made to me. Is there anyone out there who likes the sculpture? An issue seems to be public consultation. Ensuring adequate public consultation is a difficult one. There was consultation over this issue but hardly anyone attended. The RCA provides the Grapevine which keeps people in touch but it only reaches around 300 homes. What can be done to make sure people are engaged in decisions that affect them? The magazine isn't an appropriate vehicle for this type of information as it isn't sufficiently timely. Postal notification uses up funds which are needed elsewhere. What is the answer?

Rowlands Castle Women's Institute

WI looking forward to centenary year

by Rona Musker, President, Women's Institute

As ever Rowlands Castle WI is enjoying a busy and varied autumn season and is looking forward to Christmas.

The Book Club enjoyed a very interesting visit to Gilbert White's house in Selborne in mid-September. The exhibition area has been much extended and there is now a fascinating collection of artefacts focussing on Captain Lawrence Oates who was chosen to be part of Scott's team to the South Pole in 1911-12. They suffered appalling conditions and failing health so Oates sacrificed his life in the hope of saving his comrades, leaving his tent in a terrible blizzard with the famous last words "I am just going outside and may be some time." His body has not been found. It's a museum well worth visiting.

Last February we had a delightfully illustrated talk by Christina Reid entitled "Ode to Autumn – John Keats in Winchester". She described a walk that she does around the City pointing out all the aspects of Keats' time there. We asked her if she would be able to do a special walk for us and in October seventeen of us had a fascinating walk around aspects of the city that we had never seen. Sadly the weather didn't serve us well, with a couple of torrential downpours but it certainly didn't detract from a most interesting day.

Also in October the Hampshire Federation of the WI had its Autumn Council meeting in Basingstoke. 8 members from Rowlands Castle were lucky to attend as 1600 people applied for tickets and the Anvil holds about 1000. The morning ended with a talk by the Director of Sir Harold Hillier's Gardens at Romsey with photos of their new Centenary Avenue which is now 4 years old. After lunch the main speaker was train enthusiast and former Cabinet Minister, Michael Portillo, who entertained the membership about his career in politics and the BBC.

In early November Bush Wines of Westbourne put on a very educational and convivial Wine Tasting "Tour of Spain" for WI members, their partners and friends. We sampled 8 distinctive high quality wines at a very reasonable price – and I think quite a few Christmas orders were made!

To make Christmas start with a swing we are having a Barn Dance at our December meeting with business matters kept as short as possible. There's too much sitting around and eating mince pies at this time of year, so we felt a bit of exercise, music and fun was called for – and we have got an excellent caller! As ever each member will bring a present which we donate each year to "MIND". This year we are delighted that two representatives of the charity will join us for the evening and take the presents away for distribution.

Sadly we have lost several WI members this year, but the most recent is the passing of dear Hazel Bee, known to so many of you in the Village. The WI was in her DNA and she contributed to our organisation in so many ways. Our thoughts have very much been with Bernard and his family. As the WI looks forward to celebrating its Centenary next year – and Rowlands Castle WI has several events organised - may I wish everyone in the Village a Happy Christmas and best wishes for 2015.

Local Council News

Diamond Jubilee Mosaic unveiled.

**by the Clerk to the Council, Lisa Walker,
and Chairman of the Council, Cllr John Pickering**

The good news is that the Mosaic on The Green, commemorating our celebration of HM the Queen's Diamond Jubilee, was completed and unveiled on time. This was not a Parish Council project but is a good example of how well different people and groups can work together for our mutual benefit. The sale of the Jubilee Photobooks provided funding for the mosaic and the outcome is a colourful, imaginative and worthwhile memento, which is much appreciated. Our thanks go to the Diamond Jubilee Celebrations Group and all those who worked with its members, especially the mosaic designer, Liz D'Ath (pictured), who did a marvellous job for us. Thanks are also due to local builder, John Featherstone, for constructing the base, to Caroways for digging out the site, and to Keyline for supplying the base materials.



Editors note - late news: Rowlands Castle Diamond Jubilee Committee were runners up in the category of Best Street award, with their creation of a commemorative Mosaic which is situated by the Deer Leap wall on The Green. Members of the Committee attended the Ceremony last night at The King's Theatre and can be seen here holding the award.

Money for the Mosaic was raised from the sales of the Diamond Jubilee Photo Book which was spearheaded and driven by Dreen Chestnut.

Pavilion Extension

Regrettably, the work on the Pavilion extension is still not complete, though we hope nearing a conclusion. Unfortunately, the contractor has not been as helpful as we were entitled to expect. The delays have cost money, which we are in the process of recovering. We are being well served by Ruth Butler, our architect and agent, together with Cllr David Symonds who has kept the PC fully informed.

Planning Matters

Planning continues to take up much of the Council's time, in formal meetings and through the detailed work undertaken by our Planning Working Group, led by Cllr Brian

Local Council News

Harpur, with tremendous technical exploration undertaken by Cllrs Greg Becket-Leonard and Bill Wilson. They are very thorough in considering the implications of major applications. Indeed, some would say their work is more considered and professional than the comments produced by EHDC and Hampshire Highways officers.

The overall policy position on housing in this District is still not fully resolved. The Governments' NPPF leaves many issues unresolved. Our MP – George Hollingbery – has convened two meetings locally to explore matters affecting the three South of Butser Parishes – Clanfield, Horndean and Rowlands Castle, but many key questions remain unresolved. The much greater size, and hence representation on EHDC, of Horndean creates challenges to ensure our interests are taken properly into account. There is still no clarity or consultation as to the 'credit' of housing numbers if development goes ahead at Hazelton Farm. Planning permission has now been granted to build 43 dwellings at the Keyline site. Many residents will be pleased when the heavy lorries no longer need to deliver there!

Highways and Footways

The resurfacing of Redhill Road is very welcome and we hope other roads, especially Castle Road, will shortly receive the same attention. However, it is all too evident that some drivers blatantly ignore the speed limits. This is a serious hazard, so please do observe speed restrictions which are there for the good of us all.

As the nights draw in, it is especially important pavements and rights of way are kept clear for safe use by pedestrians etc. Please would all householders and landowners take appropriate action so that hedges and trees do not block pavements or rights of way, or otherwise affect the safety and convenience of others, especially as they walk about our Parish.

Dog Fouling

The open discussion at a recent Parish Council meeting on dog fouling, especially on the Recreation Ground, was constructive. It is an unseemly, unsightly and unhygienic practice, so if you are a dog owner please ensure that you clear up after them. If not, then stronger measures may have to be taken. Please remember all dogs must be on leads at all times when at the Recreation Ground, and should not be allowed to run freely on the Rec. Arising out of the open discussion, it has been suggested that residents should report to the Clerk the registration details of the vehicles of owners whose dogs are off the lead at the Rec.

Flooding

As we move into autumn and winter we necessarily have to address the possible need for action to avoid flooding in the Parish. The Flood Action Group, led by Cllr Steve Protheroe, is already active on our behalf, and we are grateful to

Local Council News

those riparian landowners who have already cleared ditches etc to help reduce the risk of flooding. We urge ALL landowners to play their part in this.

Councillor Recruitment

Finally, May 2015 will see elections to the Parish and District Councils and Parliament. If you feel joining the Parish Council may be a way in which you can contribute to your local community, please do prepare in good time.

Highways (roads/pavements, flooding/drains, street lighting, over-grown vegetation etc)

HCC Contact Centre: 0845 603 5633

Report on-line at: www.hants.gov.uk/roadproblems

Rights of Way (footpaths, bridleways, pavement etc)

HCC Contact Centre: 0845 603 5636

Report on-line at: www.hants.gov.uk/rh/row/problem-report.html

East Hampshire District Council (waste collection, planning matters, environment)

Main Switchboard: 01730 266551

Website Home Page: www.easthants.gov.uk

Rowans Hospice

We had a successful day at the Village fayre, a bric-a-brac table, and we raffled a cake, which was decorated with the Rowans logo, to mark the opening of the Hospice 20 years ago.

Our next event is a skittles evening on Friday February 27th 2015, 7pm, at Southwick Park Golf Club.

Ann Summers,
Chairman,

Rowans Hospice Havant Support Group

Planning issues

by Marge Harvey

Christmas is just around the corner and I'm not ready for it this year as it's been a very busy time for me. I thought that I would give you a run through of all the planning applications within our parish boundary. The most interesting one is the Hazelton Farm application which for those of you who don't know about this, are the fields on the left as you go towards Horndean. Part of this, is within our Parish boundary, but EHDC have said that as it is within the settlement of Horndean, that the houses built on it will be credited to Horndean. I, along with the Parish Council, have questioned this and I have asked for a second opinion on it and I am still waiting for the judgment. This land could deliver all of the houses that the government Inspector said that we had to supply from now until 2028 which is 150. A judgment in our favour would mean no more houses need to be built in the village, so watch this space. The Keyline site has been given permission, so as soon as they move, so will the big lorries, or most of them anyway. We still have Caroways and EMS rolling through the village, with EMS getting larger and larger and going through the centre of the village. The site right next door to the Keyline site is the Former Brickworks and that application is now in, so we will have to wait and see what that brings, if anything. Add to that the application for 106 houses on Oaklands phase two and if these go through, then we will have, with the Hazelton Farm houses, if they are credited to us, many more houses than we need!

We also have the Land North of Bartons Road with 17 houses applied for in the gap between Havant and us. This one is very controversial as it is building in the gap, which we have always tried to vote against. It is also a joint application with Havant and I have been working hard to get this application sorted out because I do not feel that houses should be built there, so I will carry on trying to find ways of sorting it out. There are, of course, SHLAA sites, which are pieces of land that have been sent to EHDC as sites for building on and are assessed and then included, if they are found to be sound for future sites for houses and of course, the Land owners are trying to get this land in now as EHDC do not have a five year land supply at the time of writing. I am hoping that by the time this is printed, that we will have this five year land supply and the pressure of applications will slow down a bit. In the National Planning Policy Framework, which is a document of rules set out by the government, it says that if there is no five year land supply then we should grant applications that fit with the rules, and of course, you can be sure that the developers know exactly how to do that! I do hope that I haven't depressed you too much with this information and if you would like to talk to me about it, I am very happy to meet with you and talk it through.

The next thing that I will be involved with is the site allocations, which is always difficult, because we have to choose sites in our village for the future and that is always a

District Council News

very difficult thing to do, if we think that we don't need any more houses and perhaps we will come to that situation, we will just have to wait and see.

Moving on to Hampshire issues, I'm sure that you are all happy to see Redhill Road resurfaced. I made this road my priority when assessing the roads in the village and I have also been told that Castle Road will be the next one to be resurfaced, so that is also very good news. Bowes Hill has had the pot holes done and in the future, after traffic calming, it will be resurfaced. The decision was made to assess the traffic and make traffic calming measures and then it would save resurfacing and then digging it up for the calming measures to be done. I hope that you all agree that the speed of traffic on Bowes Hill needs some work done. Finchdean Road also will be assessed for traffic calming as we have been told that the traffic speeds along there are very high, so we will be doing that work in the near future. Some people have also reported that some of the foot ways (footpaths) need some work and I have reported this to HCC, but if you have anything to report, please let me know and I can get it put on the list. I am always happy to ask the officers to come and take a look and always look myself, so that I know what it looks like. White and yellow lines have been reported, but I have been told that this is not the best time to be doing that work, but it is on the list. There are many small projects that have been reported to me and you can be sure that I have already spoken to the officers for them to be done.

I think that by now, most of you will know that I will not be standing for re election at EHDC next year and after 11 years, I think it is time for someone else to take it on. I have recommended someone and I think you will be happy with the person and in due course you will get to know who this is. I will, of course, be around to give any help at the beginning and will still be your County Councillor, as well as a resident of the village, you can be sure that I will be keeping my eye on things! I still have all of my committees and the work that goes with that, so life is as busy as ever, but as you know, looking after Rowlands Castle is at the heart of everything I do, but takes up a tremendous amount of time and I'm not getting any younger! All that is left to say is that I wish you all a very happy and healthy Christmas and New Year.

The Stansted Christmas Fayre – 21st – 23rd November 2014

Everything you need to inspire you for Christmas.

Friday 21st – 12pm – 8pm

Saturday 22nd & Sunday 23rd – 10am – 5pm

Come and soak up the traditional festive atmosphere at Stansted House this Christmas. With a wide range of gifts to provide inspiration for everyone and festive family entertainment, you'll find everything you need to make this Christmas a magical one.

Adult/ Senior £6 entry (under 16yrs free)

Please be advised that pushchairs are not permitted in Stansted House.

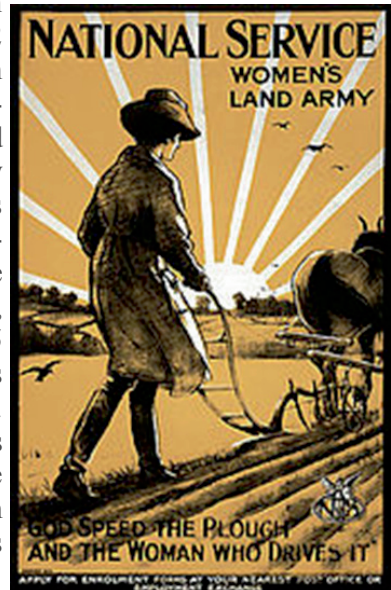
No dogs except those needed to assist.

For more information and to book tickets visit www.stanstedpark.co.uk

Opportunities for garden trainees and garden owners! Historic charity featured on BBC's "Countryfile"

By Liddy Davidson

Local gardens now have vacancies for anyone who might be interested in improving their practical gardening skills. The “**Work and Retrain As a Gardener Scheme**” (or **WRAGS**) provides men or women of all ages with the opportunity to work for 2 days a week for 12 months, under the instruction of a garden owner or head gardener, in a carefully sourced garden. The scheme is coordinated across Sussex and South Hampshire by Liddy Davidson, who sets up placements, reviews monthly reports and visits the trainees twice during their training year. Registration fees are charged to help with the costs of the scheme, which at present are £375 for trainees and £125 for garden owners and a training allowance is paid direct to the trainee by the garden owner. Liddy says that “It is a ‘win win’ situation as garden owners benefit from the help they receive from enthusiastic and committed trainees who in turn gain practical experience to go on to various careers in horticulture”.



The scheme is just one project offered by the national charity the Women's Farm and Garden Association (WFGA) and members can also benefit from very useful workshops and workdays, informative newsletters, tours of gardens in the UK and Europe and free members' gatherings in local gardens.

Liddy also mentioned that readers of the Rowlands Castle Association newsletter might have seen the WFGA featured on BBC's "Countryfile" on 10 August as part of the WW1 commemorations. The programme highlighted how in 1912, a member of this historic charity led the setting up of the Women's Land Army before the FIRST World War.

For more information about WFGA membership and WRAGS (whether as

1st Rowlands Castle Scouts

Action packed summer camp

by Nicci Lucas

The Scouts spent an action packed week at Butchers Copse in Dorset for their summer camp. They took part in activities such as climbing, shooting, abseiling, archery and crate stacking!!! Many of them have also just attended JOTA (Jamboree over the airwaves,) the largest Scout event in the world with nearly one million Scouts in over 160 countries participating. This gives Scouts the opportunity to speak with others all over the world and share adventures and experiences.

Our Scout troop has grown from strength to strength over the last year with the troop doubling in size. This term they have been working towards their cycling badge and have attended the fire station in Havant to learn about fire safety.



The Cubs had a fun filled summer camp which took place during a weekend in July. They all completed their backwoods badge where they had to learn how to light a fire, cook a meal on the fire using a billy can, cook pudding in the embers (banana surprise!) followed by marshmallows on sticks. This was followed by a session on how to safely extinguish the fire and the importance of making the area safe afterwards.

Huge congratulations to Ben Thorne, Toby Laferty and Edward Gamble who achieved their Bronze award and also to Aaron Butcher, Samuel Lucas, Alex Smith and Calum Urquhart for obtaining their silver award. These badges are the highest awards that they can obtain in their respective groups. This shows dedication and commitment throughout their time as a Beaver and a Cub and we wish them all the best as they embark on their further journeys through Cubs and Scouts. Well done to you all!

1st Rowlands Castle Scouts

In the New Year we were delighted to welcome home James Ketchell who safely returned having cycled around the world. James is a Hampshire Scout and an Ambassador for Scouting. Having only been home about 6 weeks, he was asked what his next adventure would be. He was approached by Ashley Wilson, a Scout leader from Hampshire, about expeditions that might be possible for someone with epilepsy, a condition that Ash has suffered with all his life.



After much discussion they decided that the next challenge would be to row the Indian Ocean together. So in April 2015, Ashley and James will row 3,600 miles across the Indian Ocean, departing from Geraldton, Western Australia to Mauritius. We wish them both the best of luck with their training and look forward to reporting back next year. They will continue to support the ELIFAR Foundation, (www.elifarfoundation.org), however the project will also support the Young Epilepsy Foundation. Their aim is to demonstrate that, just because you have epilepsy, it doesn't mean you can't get out there and follow your dreams.

Scouting helps children reach their full potential and helps them to develop skills including teamwork, time management, leadership, initiative, planning, communication, self-motivation, cultural awareness and commitment. This everyday adventure is only possible thanks to our dedicated team of adult volunteers and I would like to thank them all for their continued support and dedication. We would like to take this opportunity to especially thank Claire Rhymes and Jodie Chan who, after many years are stepping down as Beaver Leaders. They have done an amazing job with our younger group and have shown commitment and enthusiasm to the group. We are therefore currently looking for someone to take over our Beaver colony (6-8 year olds) so if you feel that you could offer some spare time then please do contact me. We would also like to thank Kevin Miness, who stepped down as our hut treasurer at the AGM. Kevin has held this position for a number of years and now feels that it is time to hand over the reins...or spread sheets so if there is someone out there who would be able to offer us some help with the accounts or some secretarial support please do get in contact.

Photography Club

Rowlands Castle Photographic Group.

by Ann Page

During the summer and early autumn the photographic group have been out and about taking photographs in the village, listened to some inspirational talks and enjoyed a summer BBQ.

June was a show and tell evening, where we saw member's photos, some of which were amazing and some the photographer wanted help and advice on how to take a better shot next time. These are always hugely popular meetings because we learn so much from each other.

We also talked about entering the village fair photographic competition which was on the 5th July. The number of subsequent entries far exceeded expectation and this year the standard was very high. Congratulations to everyone who was placed and a big thank you to all that entered for supporting the show.

The July meeting saw the group venturing out around the village green to take images in the evening light.

It was a time for less experienced photographers to team up with those with more experience and see how they approach the subject and set their camera up to take the shot. A good time was had by all, with some excellent results.

In August we were very lucky to be invited by David and Val Mitchell to their home for a BBQ and social evening. Everyone who attended had a thoroughly good time. Thanks to their very good hosts.



Photography Club

September was the turn of Ann Page to talk about taking a close up image and how to get the best from your image by cropping. Ann showed a selection of her images, then members were invited to use their own cameras to take shots of objects and flowers that had been provided. Finally Ann talked about the art of cropping both before and after taking the shot.



In October we will be having a look at images taken in Iceland and on Safari by Mark Seaman and Steve Radcliffe. Graham Sergeant FRPS and Carol Speight ARPS will be giving a talk on November 20th “an evening of audio visual”. December 18th is our Christmas Social. Jill Stanley LRPS, will be talking about qualifications in the Royal Photographic Society and showing her work on 15th January. So check the website <http://www.rowlandscastle.com/CulturalSocialDir/photography.htm> for more information. We look forward to welcoming you to our meetings.

Rowlands Castle Historical Society

The society now has a permanent display cabinet for small items. It is in the small Parish Hall alongside other items of our village's past. If you have any artefacts that you would like to donate, either temporarily or permanently, please contact us.

Thank You

Paul Marshman RC412028

Barbara Openshaw RC 412400

2015 Calendar

The Rowlands Castle Photography Group are pleased to announce this years Calendar is now on Sale in the Village. It costs £6.00 and features thirteen images from our village and its surroundings.

This year 50% of the profits will be donated to two local causes St Hubert's Church and Finchdean Chapel, both of which suffered in last years floods. Last year the calendar was a huge success and was very well received, this year we think it is even better and we have included exactly where each image was taken.

If you would like a large number of Calendars or wish to take some to sell then please contact Pat Carter [patcarter123@hotmail.co.uk] or Ann Page [annie.p@btinternet.com] to arrange delivery or collection.

If any Group or Cause would like to be considered for next years donation then please contact Pat Carter.

ROWLANDS CASTLE



2015 CALENDAR

Our Village & surroundings

The Rowlands Castle photography group are pleased to donate 50% of Profits from the sale of this calendar to St Huberts Church and Finchdean Chapel.

Contact Pat Carter [patcarter123@hotmail.co.uk]

on sale

This years new
and exciting

£6.00

ROWLANDS CASTLE



2015 CALENDAR
Our Village & surroundings

Rowlands castle
Photographic calendar

In your local shops or

email Pat Carter [patcarter123@hotmail.co.uk]

Craft Fair

Craft Fair Update

Hilda Tart

The next Rowlands Castle Craft Fairs will be on Saturday 8th November and Saturday 13th December from 10am to 1pm in the Parish Hall, Links Lane, Rowlands Castle PO9 6AD.

A wide range of unique gifts for Christmas and other occasions will be on sale. All items are made by local people and include Textiles, Jewellery, Knitting, Patchwork, Quilting, Woodwork, Photography and Cards.

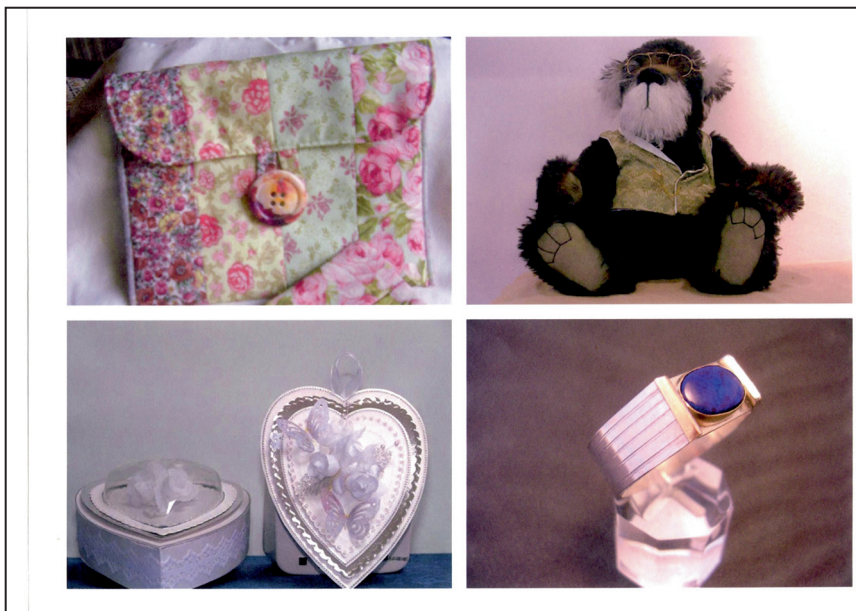
Admission is free and refreshments can be purchased.

There is a Knitting Advice Clinic so bring along your project if you are having a problem with it.

A plant stall is also available.

Find us on Facebook at: www.facebook.com/rowlandscastle.craftfayre.

If you would like to be considered for a stall please contact: rowlandscastlecraft-fayre@gmail.com or phone 07879 470127.



Gardening Club

Gardening Club Team Enters Hampshire Quiz

by Elisabeth Hall, Chairman

Eight teams of four from all over Hampshire gathered at Otterbourne on a beautiful September afternoon to compete in the Hampshire Federation of Horticultural Societies annual quiz. This was the first time Rowlands Castle have entered this competition. We had 80 questions on a huge range of horticultural subjects, and our team finished 5th, drawing with the much larger Emsworth club's team. As a consolation, we won two



raffle prizes, and had an enjoyable afternoon tea with homemade cakes.

Our last summer garden visit was at Hayling Island, and now we have commenced our autumn series of lectures, ending with the Christmas event in December for members only.

Grasses were the theme in the last picture. They have a reputation for taking over, and true to form, the hall was transformed. We were spoiled for choice. Grasses are good for autumn colour, and are good drought survivors. Our speaker says the landscaping of the motorway into Portsmouth has been good for his business; take a look on your next visit.

An exciting programme is in place for 2015. New members will be welcome to join in January. See the local noticeboard for dates and speakers.



Tennis Club

Tennis club wins Colin Manvell Award

Alan Best

The tennis club rounded off another very successful season when they were declared the winners of the inaugural Colin Manvell Award for Sportsmanship at the Portsmouth and District LTA's annual presentation evening. The award, which was set up as a memorial for the well known local tennis stalwart, tragically killed whilst on holiday in India last year, is voted for by all the teams competing in the Portsmouth league (84 of them!) and is intended to recognise and reward the club which, in the opinion of the team captains, arranges and plays their matches with sportsmanship and good humour, in the way that Colin would have appreciated.

Accepting the award on behalf of Rowlands Castle, club secretary Alan Best said that he was very proud to accept the trophy for the club, and in particular he praised the contribution to the results made by the Ladies team, who, he said, never fail to enjoy their matches, win or lose, and who must surely enjoy their tennis more than any other team in the leagues!

The Portsmouth League caters for 18 clubs in the area, large and small, with competitions for Men's, Ladies and Mixed teams. There are 4 divisions in each section (5 for Ladies in the winter) and Rowlands competes in the second or third tier in all sections – a particularly good performance given the size of the club!

Many of those who play in the teams also featured in the club's internal tournament, the finals of which were held over two days in mid September. The tournament features events for all, Open events for the best players and age related events where partners are drawn at random rather than chosen. This leads to some very interesting and enjoyable combinations and as ever, the finals weekend saw a good mix of highly competitive and rather more light hearted fun tennis.

But the club doesn't just cater for competitive players. Club evenings, open to all players of any standard, are held every Monday and Friday evening from early April to early September. The club sessions switch to Saturday afternoons during the winter, but attendance has been very poor so far this winter and unless support picks up the sessions may be cancelled in the New Year.

The club also has a comprehensive court booking system which allows those who wish to play social tennis with their friends to book a court up to 7 days in advance.

Tennis Club

New members are always welcome so if you are interested in rekindling a long lost interest in the game, or would like to test your skills against players from other clubs by playing some team tennis then please contact the club using the details given below.

We do not have a coach of our own, but we have very good relationships with the Advantage Tennis Academy run by Roger Manvell, head coach at the Avenue tennis club in Havant. Roger organises various coaching courses for adults and juniors during the summer months. Just ask if you would like more details.

We are also extremely fortunate to have Chris Wilkinson, former British No 1, television commentator and LTA performance coach, as a member of the club. Chris is available for individual (or group) coaching by arrangement – just contact him as below.

Membership sec	Michele Harpur 023 9241 3566 membership@rctc.co.uk
Club Secretary	Alan Best 01243 389 443 sec@rctc.co.uk
Chris Wilkinson	07768 772561 chris.wilkinson90@virgin.net
Web site	www.rctc.co.uk



St John's School

The First Rowlands Castle Scarecrow trail 4th-12th October

Sue Arnold

Despite being a wet and miserable Saturday, the 4th October heralded the start of the first ever Rowlands Castle Scarecrow Trail. Streets around Rowlands Castle were now home to new faces, those of many different Book Characters. They could be found, in windows, attached to gateposts, flying through the air and even climbing walls! There were 40 scarecrows in all on the trail, which was a fantastic turnout for a first time event and the effort that businesses, organisations and households had put into them was amazing. Characters ranged from those in fairy tales such as Goldilocks and Cinderella to Miss Havisham (Great Expectations) and Mr Collins from Pride and Prejudice. It was lovely (when it stopped raining), to see so many families out on foot or on bicycles following the trail.

Thank you to Reverend Trevor Filtness and Mrs Pennicotte-Henrie for judging the competition for the best scarecrow. A task I know was not easy as the standard was so high. Prizes were awarded at a Scarecrow Open Day at St Johns School on the final trail day, Sunday 12th. The Outdoor Learning Areas at St Johns were on display with the fantastic scarecrow characters that the pupils of St Johns had made, strategically placed around the school grounds. Pupils, parents and villagers attended this event and it was lovely to see the school host to many new as well as familiar faces.

Everyone enjoyed delicious tea and cakes whilst eagerly awaiting the announcement of the winning scarecrows. In first place was Rapunzel by the Allcock family, second was Burglar Bill made by Annabelle Cooter and in third place was Mr Perks from The Railway Children crafted by Catherine Claasen. There was also a prize for the person/family who guessed the most book characters and this went to the King family.

The St Johns School Outdoor Learning Group Committee would like to thank everyone who took part, both those who made the scarecrows and those who followed the trail. The event made about £350.00 to go towards the last phase of the schools outdoor learning project.

St John's School



*Photos: Peter Langdown and
Fiona Charlesworth (bottom right).*



Successful summer

Debbie Cornish

We had a great end to our summer term with many achievements to celebrate.

Our year six class performed 'Midsummer's Night Dream' with clarity and confidence. Their acting and singing skills were praised by everyone.

For our end of year prize giving we had difficulty deciding who would win the awards and were grateful to Jack Miness for attending and presenting the 'Endeavour' cup this year. This was awarded to Sam Tait for his extraordinary ability to keep on trying even if he found something difficult.

We have a range of cups that have been donated over the years. The 'Little Cup' for music, 'Tilley Cup' for writing, and a variety of others. The 'Courage Cup' is awarded for bravery and this year went to Eryn Tait. Commander Cowin gave a fascinating talk on bravery and awarded this in person. We always enjoy Commander Cowin's exciting tales.

Our end of year SATs results were extremely good. This demonstrates the progress that the children are making throughout the school.

We had some fun end of term events including two residential visits; year five went to Stubbington for a week and year six visited Fairthorne Manor. We were blessed with good weather and the children explored new activities and adventures.

We also held our camping evening for year four and had a campfire to cook marshmallows and jelly babies on.

The term always ends with a special worship time lead by St. Johns Church. The children look for-



St John's School

ward to the end of term quiz where they astound us with their ability to remember facts from The Bible from the past year.

We look forward this autumn to 'Forest School' mornings, where children will be learning specific outdoor skills. If anyone is interested in helping on these mornings please contact the school.

Thank you to the village for participating in our recent Scarecrow Trail and to our team for organising this. Please see the other article for names of winners etc. We enjoyed villagers popping into school to collect trails and it was great to see them all around the village.



Caroway
Est 1980

**For all your
fencing needs**

Suppliers & Erectors of Every Type of Fencing Including:

**Chainlink • Palisade (wood or metal) • Panels
Closeboard • Weldmesh • Posts (concrete or wood)
Security Fencing • Trellis • Gates**



We also offer a friendly reliable and competent skip delivery service to all local areas. Our skip sizes are mini, midi and maxi and we also provide a Grab service.



**TRADE
AND
PUBLIC
WELCOME**

Visit our website for any fencing prices or call 023 9241 2768

www.caroway.co.uk

Caroway, Station Yard, Bowes Hill, Rowlands Castle, Hants PO9 6BP

For all sales and letting enquiries: **02392 410 014**
lettings@hpd-estates.co.uk
sales@hpd-estates.co.uk
14 The Green, Rowlands Castle, Hampshire, PO9 6BN
7 South Street, Havant, Hampshire, PO9 1BU

HPD ESTATES



GREEN LANE, HAMBLEDON, PO7 £1,250,000

Key features

**Detached • Six Bedrooms • Two Detached Out Buildings
 Paddock • Woodland • Panoramic Views • Circa 6.2 Acres**

Located in the South Downs National Park on the edge of the village of Hambledon, is this interesting proposition which could provide excellent flexibility in this desirable location. The property consists of a detached six bedroom family home set in grounds of approaching 6.2 acres, with two detached outbuildings which could be ideal for someone looking to work from home. The grounds are made up of formal gardens, an area of woodland and a paddock area.



WHICHERS GATE ROAD, ROWLANDS CASTLE PO9 £450,000

Key features

**Three Bedroom Detached Cottage • Three Reception
 Rooms • Detached Garage With Drive • En-Suite To Master
 Bedroom • Fully Fitted Kitchen • Utility Room • Double
 Glazing • Gas Central Heating • Beautifully Presented
 Viewing Highly Recommended**

The property benefits: Entrance hall, lounge, dining room, music room/study, fully fitted kitchen, utility room, cloakroom, first floor, master bedroom with en-suite, bedroom two, bedroom three, bathroom, garden to rear, garage and drive.

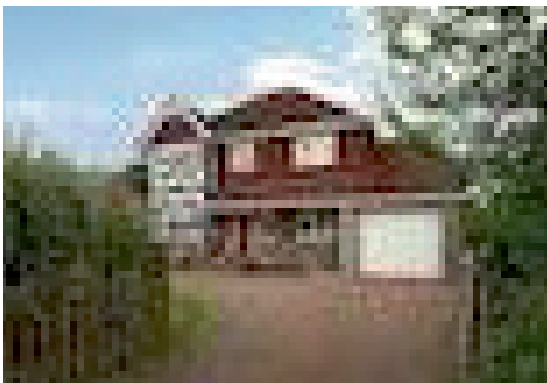


FINCHDEAN ROAD, ROWLANDS CASTLE PO9 £520,000

Key features

**Three Bedroom Detached Bungalow • Two Reception Rooms
 Garage With Drive • En-Suite To Master Bedroom • Utility
 Room • Double Glazing • Gas Central Heating • Panoramic
 Views • No Forward Chain • Requested Location**

The property benefits: Entrance hall, lounge, dining room, kitchen, utility room, master bedroom with en-suite, bedroom two, bedroom three, bathroom, garage and drive providing off road parking with side and rear gardens.



WELLSWORTH LANE, ROWLANDS CASTLE PO9 £575,000

Key features

**Four Bedroom Detached House • Garage With Drive
 Three Reception Rooms • Conservatory • Fully Fitted Kitchen
 En-Suite To Master Bedroom • Double Glazing • Gas Central
 Heating • Excellent Decorative Order • No Forward Chain**

The property benefits: Entrance hall, lounge, dining room, sitting room, kitchen, utility room, conservatory, cloakroom, first floor, bedroom one with en-suite, bedroom two, bedroom three, bedroom four, bathroom, garden to rear and drive leading to garage. The property is set in the requested village location of Rowlands Castle with local shops and Rowlands Castle Train Station is on the London Waterloo to Portsmouth line.

HPD ESTATES are an innovative and contemporary agency that is founded on traditional customer based standards.

We have built an unrivalled reputation for professionalism and service that is unparalleled from our experienced and motivated sales team.

At HPD ESTATES we have a reputation for marketing fine properties across the South Coast and each customer is offered a personal and tailored service ensuring that needs are met throughout the sales process.

HPD ESTATES bring a fresh modern approach backed by professional and friendly staff. Whether buying, selling, letting, developing, in need of financial advice survey or auction please do not hesitate to contact us or call into one of our office's to meet the team.

RENTING AND LETTING WITH HPD ESTATES

Landlords will benefit from our competitive full management services. We offer a full management package, tenant find and lots more with very competitive commission rates.

Tenants looking for a property to rent can view our extensive portfolio of properties – there is something for everyone's tastes and budget.

BUYING AND SELLING WITH HPD ESTATES

We realise how stressful buying or selling a property can be, we have an effective system for matching clients with available properties.

Achieve the best price with our proactive, experienced and motivated sales team.

The Government's Help to Buy scheme could help you get on or up the property ladder, read our factsheet or contact your local office. Buying a home is very exciting but can also be very challenging, we're here to make sure it goes as easy as possible and that starts with helping you find your dream home.

Finding what you're looking for? Just tell us where you're looking and we'll undertake the search for you. We will even tout/ advertise your desired areas to help find the property you want.

MORE PROPERTIES REQUIRED



FINCHDEAN ROAD, ROWLANDS CASTLE PO9 £576 PW / £2495 PCM

Furnished • Long term Let

Key features

Five Bedrooms • Three Reception Rooms • En-Suite • Fully Fitted Kitchen • Utility Room • Double Glazing • Gas Central Heating • Garage With Drive • Panoramic Views • Extensive Grounds

This executive five bedroom house set in a rural location with picturesque views over the South downs and set in extensive grounds. The property is available to let fully furnished and comprises of five large bedrooms with master en-suite, family bathroom with separate shower and bath. Ground floor benefits from three reception rooms, dining area, fully fitted kitchen with built in appliances and breakfast bar, utility room, cloakroom and large entrance hallway.

Rowlands Castle Painting Society

New members welcome

by Terry Devaney

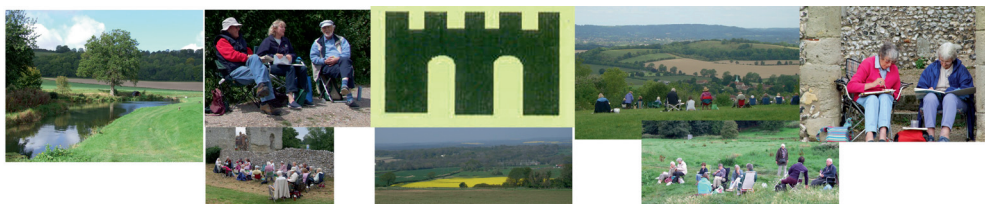
The members of the Rowlands Castle Painting Society started back at the Parish Hall on the 7th October. Life drawing was the order of the day, the new model proved to be very popular and some very good work was produced. The society has Gary Miller to thank for sourcing the models for the Life Drawing sessions. Gary, who is a relatively new member works hard to supply the demand for good models and does a sterling job.

Members of the public might be interested to know they can attend the fortnightly art demonstrations which take place in the Parish Hall from 7.30pm to 9.30pm. To find out details of these go onto www.rowlandscastlepaintingsociety or telephone : 01243 371662 and speak to John Davis.

There is a varied programme, with all meetings taking place from 2pm to 4pm on Tuesdays at the Parish Hall. Life drawing Tuesdays alternates with Tuesday workshops, which are followed in the evening (7.30pm-9.30pm) with a demonstration by a professional artist.

The next workshop sounds intriguing, it is being given by John Shervall who has asked members to bring along acrylic paints, a palette knife, board and nylon sock (no brushes!) Will members be asked to "put a sock in it?" It sounds like a fun afternoon. This is just the beginning of an exciting time ahead with a Christmas Party to look forward to.

The Society is open to all and is actively looking to enroll new members regardless of ability. If interested in joining this friendly group of artists contact as above. New members are most welcome, it enriches not just the Society but on a personal level, they are able to meet with like-minded people.



Shaking off the cold

by Juliette O’Hea MCSP MSc PGDip (rheum)

In the last edition of the Village Magazine I gave you an exercise to improve your posture. In this Autumn edition to shake off the cold, let's try a couple of exercises that warm and mobilise the body.



Sit in a firm, upright and preferably armless chair and pop a small, soft cushion behind your lower back. Imagine you are being pulled up by a piece of string attached to the crown of your head, creating height in the spine. Soften the shoulders out to the side. *Now squeeze in your tummy button, tightening your abdominal muscles to protect and create strength around the spine. If you can, try to keep this posture throughout the exercises.*

Exercise 1

From this position, make circles with your lower spine as if you were belly dancing. Breathing out whilst you squeeze your back into the cushion and breathing in as you lift away from the cushion. Do around 5 - 10 circles and then change direction. You should feel yourself rising and falling in the chair and your head should stay upright.

Exercise 2

Continuing to sit tall with your head upright, lift one buttock at a time off the chair. The faster you do this exercise and the more you lift your buttocks off the chair and swing your arms, the more effective the exercise. This exercise mobilises the lower spine and involves a little cardiovascular work too. Your body should now feel a little warmer ready to fight off the cold.

As with any exercise, if there is any sharp or unusual pain, never push into the pain and back off the exercise a little. Try to exercise and keep moving through your week.

As Confucius says 'It does not matter how slow you go as long as you do not stop!'

Juliette is a Chartered Physiotherapist and she lives in Rowlands Castle. She can assess and give you exercise advice in your own home and she runs exercise classes for people with arthritis and mobility problems in Emsworth, Havant and Chichester. For more information please check out her website www.arthritisfirst.co.uk, email her physio@arthritisfirst.co.uk or call her on 02392 413885/07974 238787

DACD (Rowlands Castle) Cricket Club

Second Half Season Report

Jonathan Law

Following our return from foreign fields, fixtures resumed with our annual trip to Buriton. Buriton CC was reformed a few years ago and have made great strides particularly with their on-field performances. Suffice to say we succumbed to our first ever defeat with our inability to post a competitive total (104-9 off 35 overs) leading to a loss by 2 wickets. Defeat was tempered by the usual excellent post match hospitality in The 5 Bells.

Two good midweek wins at the Recreation ground followed against Sweaters and Skulking Loafers. These were interspersed with a busy weekend of Sixes first at East Meon followed the next day at Mortimer in Berkshire. Whilst our on-field performances didn't see us qualify for the knock out stages we were good value in the beer tent. The six a side format is definitely a young man's game but while these tournaments are combined with beer festivals our attendance can be guaranteed.

Next up was Petersfield away and what was probably our most satisfying win of the season. After last year's two heavy defeats we batted first on a very hot day at The Heath posting a total of 214 with Tim Dix, Owen Hughes and Dinesh all posting scores in the 40's. Petersfield had, as usual, a very useful line-up but opening bowlers Mike Whyatt and Jon Law with 3 and 2 wickets respectively removed the top order in quick time and Petersfield eventually limped to 140 all out.

A close midweek defeat to Raymarine was then followed by a couple of heavy Sunday defeats by 12th Men and Slindon. In the shorter form midweek games we posted victories against The Bell, Chichester and Portsmouth Academicals, both games seeing DACD holding their collective nerves to win



DACD (Rowlands Castle) Cricket Club

in the last over.

The glorious summer weather meant we played 10 games in July and the continuing good weather saw August start with wins over Odd Socks and MCC before a thunderstorm meant the cancellation of our return fixture against Buriton in early August. This was the first game rained off since the end of May although unfortunately the extended dry spell meant the pitch suffered from a lack of water. That's the British weather for you!

Our derby against Clanfield ended in another defeat to our local rivals. After bowling Clanfield out for 134 with the wickets being shared around the bowlers, we followed up with an indifferent batting performance to lose by 51 runs. Only one batsman reached double figures and extras was second top score!

As the end of the season approached, we suffered heavy Sunday defeats to St James Casuals, Bishops Waltham and Lavant. The game against St James Casuals saw only the second lady player to take the field for DACD in 27 years. Many thanks to Sam McGuire for her contribution. The only bright note was a tied game away to Sway in the New Forest at the end of August. Meredydd Hughes led the way with an innings of 81 (highest club score of the season) and 2 wickets but we just couldn't find the winning run off the last ball.

A busy weekend in mid-September saw a very enjoyable Summer Ball at the Bat and Ball followed by a hard mornings work carrying out the end of season groundwork on the square. The wet and warm weather through September and early October has seen excellent early growth on the re-seeded ground.

All that remains is for the Awards Dinner and Cultural Trip to Seville in November before we re-commence with indoor nets in January.

2014 Playing Record P 27 W 13 L 13 Tied 1

DATE FOR YOUR DIARY 14th MARCH FUND RAISING QUIZ AT PARISH HALL

Details to follow on Grapevine in due course.



Hedgehogs

Hedgehogs need your help

by Carolyn Couch

The best way to provide a nesting option for hedgehogs is by creating a natural feature, such as a compost heap or log pile, as this has the added benefit of encouraging insect prey too. Artificial hedgehog houses (or hibernacula) are also used by hedgehogs and can be really fun to make.

If you leave a messy patch in a quiet undisturbed area of your garden then hedgehogs might make their own nest there either to hibern-

nate in or to rear their young. However, if you want to improve your chances of having a resident hedgehog you could either buy or make them a home.

Some things to bear in mind are:

- When siting the box choose a shady, quiet area of your garden.
- If the box lacks a tunnel entrance, try to include an interior tunnel or dividing wall to prevent predators such as badgers or foxes from getting to the hedgehog with their paws.
- We recommend using untreated wood for hedgehog homes. Wood from certain softwood tree species grown in the UK, such as larch, Douglas-fir and red cedar have excellent durability as exterior timbers. Pre-treated wood can contain chromated copper arsenate (CCA) compounds that are hazardous to many species. PTES promote the use of locally grown timber which encourages good woodland management practices.
- Consider rigging up a trail camera to keep an eye on who's about.

Remember - without access into your garden, a hedgehog won't use your hedgehog home, no matter how lovely it is.

DON'T GIVE THEM BREAD AND MILK IT MAKES THEM SICK.

Hedgehogs are in decline they need your help!



The children of Rowlands Castle are invited to:
The Rowlands Castle Association's Annual

CHILDREN'S CHRISTMAS PARTY

Sunday 21st December 3.00-5.00pm
at Saint Johns Church Hall, RC

Join us for an afternoon of magic, dancing, and
high tea for the children plus a visit from Santa
Claus. Only £1 per child

(please bring a present with your child's name clearly labelled)



**Featuring
Magic Mikey**



For more information
and to book tickets
please contact:
Anita King on
07952 882201 or
anita.mcmullan@virgin.net

St John's Church

Flower Festival and Upcoming events by Revd Trevor Filtness Vicar of St John's

A very busy summer and early autumn with all the excellent and traditional Rowlands Castle events and it was a delight to participate. We also very much enjoyed our school's Scarecrow Trail Competition. We participated at the Rectory by making a scarecrow that was supposed to be the irritatingly obsequious cleric Mr Collins from *Pride and Prejudice*. I am sorry to say that our congregation thought it was me but I hope that was more to do with size than Mr Collins' character! We also tied-in our Messy Harvest Festival with the scarecrow theme; worship which was enjoyed by about 150 people of all ages.

Having completed repairs to the roof, porch and one or two other small items (thank you again for all your support) we then had a piece of the ceiling descend, praise God the place was empty. We had to close the church because we could not predict if this was a one-off event or a ceiling structural problem. We now understand that it was caused by the continuous warm weather during the summer. I am pleased to say that we are once again using the church as safety netting has now been put in place while we consider options for a permanent solution. I have no doubt all options will be at a lively cost! I would like to thank our brothers and sisters in Christ at the Church on the Green and also at St Wilfred's Cowplain who generously came to our rescue for services requiring a church building.

On a more pastoral note, as I write we have just launched our 'Here to Listen' service. If you would like a visit to chat about anything at all or perhaps you are feeling a little lonely or something is troubling you then please do give our confidential number a call: 0845 226 9437 or send an e-mail to:

heretolisten@stjohnschurch.org.uk You can even phone 92 410111, our office, between 9am & 1pm. Just mention 'Here to Listen' and Gill will pass your name and contact details immediately to our organisers. You will see leaflets around the village as well.

This service is for everyone, church-goer or not, religious or not. It is entirely confidential and is there to complement everything else that is done so well in our village. We are of course motivated by our faith in Jesus but our aim is to provide someone to chat to without condition.

Astoundingly Christmas is not far off, so here is what we are doing during Advent and Christmas:

Sunday 30th Nov at 6pm: Advent Sunday Candlelit Praise Service with Advent readings and traditional hymns. This is not the Carol Service.

Sunday 7th Dec at 3pm in the Church Centre & Church: Messy Christingle. This was very popular last year. It is a wonderful way for families to think about all the unhappy and neglected children around the world. An excellent tea is provided!

St John's Church

Sunday 14th Dec at 3.30pm In Loving Memory. A candlelit service. The first Christmas after a loved one has died is hugely sad. We cannot avoid thinking about the 'empty chair'. This service is for everyone who will miss their loved one this Christmas and would like to light a candle in loving memory.

Sunday 21st Dec at 6pm: Traditional Festival of 9 Lessons and Carols

Christmas Eve:

6pm: Carols Around the Tree, a fun family service with carols and an 'Instant Nativity Scene'. A great family occasion.

1130pm: Traditional Midnight Holy Communion

Christmas Day 10am: Family Holy Communion

With every blessing

Trevor

Rev Trevor Filtness

Vicar

St John the Baptist

Rowlands Castle

07785 568056

02392 410111 (Office)



MORRIS BUILDING SERVICES

Shaun Morris

113 Finchdean Road, Rowlands Castle, Hants, PO9 6EN

RENOVATIONS

ALTERATIONS

SMALL WORKS

ALL ASPECTS OF PROPERTY MAINTENANCE AND
REPAIRS, INTERNAL AND EXTERNAL

ROWLANDS CASTLE

(023) 9241 3130

FREE ESTIMATES

07941 742598



ARTHRITISFIRST

Exercise Classes and Home Visits

- Improve your fitness and mobility
- Tailored to your needs
- All ages and abilities welcome
- Classes in Emsworth, Havant and Chichester

FREE Taster Class

Run by a **Chartered Physiotherapist**
Please contact Juliette O'Hea

Tel: 02392 413885 or 07974 238787

Email: physio@arthritisfirst.co.uk

Website: www.arthritisfirst.co.uk

St Hubert's Church



Heaven on Earth

John Bates

History, a stone at the foot of the footpath leading to St Hubert's church, Idsworth and a list of its incumbents contained in a picture frame in the building, all indicate that it had its beginnings in 1053. Its original construction is attributed to the Earl of Godwin, the father of King Harold of Hastings fame. According to them, the church was visited on 30th August 1912 by two of his descendants, Bill and Pauline Godwin. This interesting fact would be lost to history were it not recorded in a fascinating document kept in the church and compiled by its many visitors. The above ancestral link has not been checked for accuracy but it could well be true.

Entries reflect the views, comments, aspirations, prayers and the effects that their visits have had on their authors. As might be expected, these are extremely diverse. Their totality provides fascinating dimensions to the value of the existence of places such as St Hubert's. However, throughout both periods, there is a consistency of entries that highlight the circumstances that attracted the visitor in the first place, appreciation of the obvious historical features of the building and its decoration, the almost uniqueness of finding the church door unlocked, its framed prayer of welcome, evidence in the obviously cared-for flower arrangements and weekly duty lists of its use by a regular congregation and above all, the silence. A few of the repeated remarks illustrate the atmosphere experienced by visitors:-

You can feel divinity and peace. Very special. Spiritually lovely. My favourite place for peace. Feels quite magical. A little piece of Heaven on earth. Stunning. Happy just to sit here. You can feel all those who have been here before. If the walls could only talk. For a few moments my troubles disappeared. Historical treasure. Serenity for ever. Haven of peace and beauty. Feel nearer to God here. Simplicity touches the heart. Never known such peace. It is perhaps possible to encapsulate the above comments in the following gems:-

What a jewel to find in a field!

A small church with a big insight.

Need a new vicar?

Another group of visitors is made up from those who have either lived locally, been associated with St Hubert's and moved away or come from families whose forebears had an association with the church. These include elderly visitors who from a young age had been told of their family connections with St Hubert's going back several generations. "He pumped the organ, went to Idsworth School, worked at the big house and went to war in 1914". "The family have always come here since 1886". "My father, Arthur Stares discovered the painting when asked to re-plaster the church". "Our great-great grandparents were married here in 1840" I realise that generations of Tregust have worshipped here and are included in the 1795 seating plan"

St Hubert's Church

Anniversaries of marriages, christenings, bereavements and interments of ashes give rise to visits by many who have experienced these events at Idsworth. In the case of marriage, comments have cause to recall the events with joy and happiness and often include the name(s) of their accompanying children. They provide an indication that the existence of St. Hubert's will continue to be a feature in their future lives. The comments made by those who come to be near the earthly remains of loved ones are simple, factual and significant in their brevity. In many cases, one remembers those concerned as having been a member of the congregation and recalls the contributions they made to the continuance of worship in this special place. That there has been a reunion of family members of the interred is comforting in that St Hubert's retains its significance of purpose in the lives of families of those who have worshipped within its ancient walls. Prominent among these is the continuing connection with the family of Doreen Bufton, authoress of the Idsworth Prayer; her contribution will continue to be valued by the many visitors that come through the open door.

Why don't you consider giving it a go? I'm sure you'll find it rewarding. There is a further group of regular visitors other than the congregation who do this. They come because they are ill - at -ease, they are emotionally disturbed and have insurmountable problems. They seek help and guidance through their presence and prayers in this Holy place and are confident that it will be available to them by doing so. Their comments make it quite clear that they feel that their aim has been achieved and their prayers answered. They depart renewed and refreshed for what life has to offer in the future. Some examples:-
Thank you Lord for your guidance, strength and hope.

Thank you God. I came last week because I needed you so. It was so silent yet I heard you all around. I was never sure, but now I have no doubt.

God bless all those who pray for those of us with difficult paths to follow.

In a
few
moments
my
troubles
disap-



all

CHRISTMAS SERVICES AT: ST. HUBERT'S, IDSWORTH

Sunday 21st December

9.30am

Service of Nine Lessons & Carols

Christmas Eve 24th December

11.30pm

Midnight Communion by Candlelight

Christmas Day 25th December

9.30am

Family Eucharist with Carols

Church on the Green

“Onward Christian Soldiers...”

by Jackie Whitehead COTG

We have two new things to report from the Church on the Green.

Jason (Jace) Clark has joined us as a student pastor. He will be working with us, preaching regularly and we are sure he and his family will be a breath of fresh air for the church family at the COTG. Come and meet him, we will be so pleased to see you.



Also, on the 22nd November at 7pm we are having another music evening. If you remember the last one then you will know it is a time filled with good music from local singers and musicians and lots of fun. There will also be loads of drinks and munchies so if you don't like music, come for the food!

Our little church, neatly tucked at the end of the village, is a Christian community, it is a place of reflection and peace in a busy world so full of turmoil and unrest. It is also a place of activity and significance within the wider community of Rowlands Castle. Don't forget our Sunday Services, our monthly Cafe Church (from Jan, the first Sunday in each month) or our Coffee Mornings and should you need prayer or help then contact us or pop a note through the door.

Phone: 07952 572 526

Email: everyone@church-on-the-green.org.uk

Website: www.churchonthegreen.hampshire.org.uk/

Every Blessing from us to you.

Rowlands Castle Good Neighbours

Rowlands Castle Good Neighbours AGM

by Ian Hewitt

Good Neighbours continues ... with a few changes. During the year Diana Ford, Tim Haigh and Vera Whitlock retired as volunteer drivers while we welcomed David Hooper, Richard Tyrell, Jenny Dolman, David and Diane Mussell, with Stuart Meeke, Michelle Daniels and Gina Eberhardt soon to start. Thank you to all retiring and new volunteers.



In September some 25 or so volunteers enjoyed a slap-up cream tea at the Church-on-the-Green as a Thank You from the committee for their work over the year. And more thanks to the ladies of the committee for laying on such a splendid tea.

On 5th November all those involved, volunteer drivers and clients, will hold one of our regular get-togethers at the Church on the Green. The church is open for refreshments every Tuesday and Wednesday morning from 10.30 – 12 noon. All are welcome – we just join the usual open house and swell the numbers.

In October, some committee members attended the county annual Good Neighbours conference in Winchester. In Hampshire there are about 125 Good Neighbours groups with over 3,800 volunteers who carried out 156, 600 tasks. This represented a 2% annual rise in volunteers, but a 9% rise in tasks so we are getting busier and very much still needed.

The county Support Services are evolving with a series of 'on the road' local cafe staff visits which committee members have found useful. Next year they will be launching some e-learning training programmes for volunteers on subjects such as Safeguarding Adults, Food Hygiene and Dementia Awareness. Watch this space ...

We heard a talk on Trading Standards – ALWAYS worth hearing. Two loud-and-clear messages: DON'T DEAL WITH DOORSTEP TRADERS and DON'T GIVE BANK DETAILS OVER THE PHONE OR AT THE DOORSTEP. We heard some heartbreaking stories of scams where vulnerable people have lost life savings.

1 IGNORE telephone calls or emails telling you your bank card may have

Rowlands Castle Good Neighbours

been compromised and needs changing – and requesting your bank account details.

- 2 IGNORE visiting doorstep traders offering to do deals like Jet Washing your drive
- 3 IGNORE mail orders inviting attractive investment opportunities in unusual COMMODITIES e.g. wine. One gentleman had invested a five-figure sum in wine laid down in cellars in Dubai. Every 6 months or so he can ‘upgrade’ for a fee, to a better quality vintage. He hasn’t actually seen any of ‘his’ wine !
- 4 IGNORE text messages which allow you to ‘unsubscribe’ by texting ‘Stop’. This informs the scammer that the number is still in use and could therefore be subject to further nuisance or threatening calls.
- 5 IGNORE letters telling you that you are a beneficiary of some long-distant relative. For a modest lawyer’s fee, that money can be released to you in due course ...
- 6 IGNORE sales catalogue prizes where you have to send some money to claim the prize.
... and the list goes on

Finally, if you need any help – or know of anyone who may need help - for example, with:

Transport to hospital, library or shopping ?

Collecting a prescription from the doctors ?

Transport to a club or social event ?

Some company for a chat ?

Any other neighbourly activity?

then please phone or remind them of our help line - 0845 519 6641

Please try to give at least 48 hours notice (if possible) – particularly if phoning at weekends.

Domestic Heating Advice

Questions I'm most often asked

by Nic Radcliffe

As you can imagine, my customers ask a whole range of questions. Here are my answers to three of the most common ones I'm asked.

Q. I've heard people talk about balancing radiators. What is this?

A. If your radiators are not balanced, some will not get as hot as others or may not even get hot at all. The good news is that this is relatively easy to fix. There are two ends to a radiator. The User End, the one with a thermostatic valve or a head you can turn, and the Engineer End which has a head you cannot turn. The Engineer Ends can be adjusted by your plumber so that all radiators heat up evenly at the same time. Once they are set, that should be that with the delicate balance of the system then holding steady.

Q. Is it possible to get more pressure from my hot taps and showers?

A. Most people have what's called a gravity-fed hot water system in which the pressure coming from the taps and showers is literally the water dropping from the loft tanks. In some instances this simply isn't enough. There are a couple of ways to fix this. The first is by putting a pump on the shower supply to give you a nice powerful shower. The other route is to have a pressurised hot water cylinder, also known as an unvented cylinder. This puts all the taps and showers in the house to mains pressure, that is, the same as the pressure from your cold kitchen tap. Another benefit is that the water in this type of cylinder heats up more quickly and so the boiler uses less gas.

Q. What are the benefits of me changing my boiler?

A. The main difference is less use of gas and so lower gas bills. The Energy Saving Trust estimate that by moving from an old G-rated boiler without thermostatic radiator valves to a new boiler with these controls could save you up to £490 a year. Or if you already have the thermostatic controls the saving can be £315 a year. You can compare these figures with the cost of a new boiler installation which starts at around £1500. And of course, you'll also be helping the planet by significantly cutting your carbon emissions.



Why not advertise here?

Local businesses are welcome to advertise in RCA Village Magazine.

It's low cost and your advert will be seen by every household in Rowlands Castle, Finchdean and the surrounding area.

For more information contact

Prue Amner Advertisement Manager

RCA Village Magazine

Email: adverts@rowlandscastle.com

or phone Tel 023 9241 2459

First World War History

The War Memorial Jutland

by Tony Cowin Historical Society

The Battle of Jutland, fought on 31 May/1 June 1916, was the ultimate clash of the British and German battle-fleets in the First World War. Both sides claimed a victory. 2,554 German seamen died; and 6,094 British. Among the latter were 2 men from Rowlands Castle.

Herbert Lyne Geoghegan (pronounced Jagan) was brought up in Germany, and fluent in German. He took a first degree in Queen's College, Galway and an MD in Trinity College, Dublin. He started his nautical career as a doctor aboard the ships of the Pacific Steam Navigation Company (PSNC), carrying passengers and freight on the route from Liverpool, round Cape Horn to Valparaiso, Chile, with calls at intermediate ports (Lisbon, Buenos Aires, occasionally the Falkland Islands. The Panama Canal was not yet built). He made 5 round trips.

In 1899, several of the PSNC ships were taken up as troop ships for the Boer War. Herbert joined the Royal Navy as a Surgeon. He spent some time ashore, at the Royal Naval Barracks, Portsmouth, and latterly, at the Royal Marines Depot at Deal, caring for the young Marines under training.

During his time ashore he translated into English the German book *Bacteria* by Dr Max Schottelius (in its day a useful introduction for doctors).

Following promotion to Fleet Surgeon, he was appointed at the start of the war as the Principal Medical Officer of *BLACK PRINCE*, an armoured cruiser of 13,350 tons, launched at the Thames Iron Works in 1904. She carried a main armament of six 9.2 inch guns, each in separate turret.

Joseph James Boncey is one of the 3 Boncey brothers whose names are recorded on our War Memorial. Joseph joined the Royal Marine Light Infantry (RMLI) as a Regular, and was trained at Deal. (His brothers were respectively, a corporal in the Royal Sussex Regiment, and a Petty Officer Stoker in the Royal Navy. I hope to discuss them in another article).

Joseph was appointed to the battle-cruiser *INVINCIBLE* (17,250 tons). Like the revolutionary all-big-gun *DREADNOUGHT* (ten 12-inch guns), launched in 1906, *INVINCIBLE* was a product of the fertile mind of Admiral 'Jackie' Fisher. She carried the same big guns as a Dreadnought (eight 12-inch guns in 4 turrets), but carrying less armour, was significantly faster. Fisher said 'Speed is Armour!' *INVINCIBLE*, first of her class, was launched in 1907. The Royal Marines formed the crew of one such turret at Jutland.

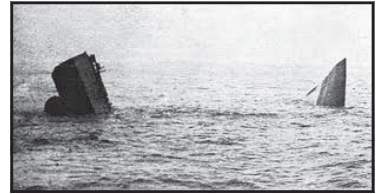
British wireless intercept and code-breaking ensured that Admiral Jellicoe with the Grand Fleet left Scapa Flow (and Admiral Beatty with the battle-cruisers left Rosyth) well in advance of the German Admiral Scheer sailing with the High Seas Fleet from Wilhelmshaven. The German battle-cruisers under the command of Admiral Hipper left Wilhelmshaven an hour ahead of Scheer (around 1am on 31 May).

First World War History

The 2 battle-cruiser forces met around 3.30pm. The Germans opened fire at 3.48pm. The battle-cruiser INDEFATIGABLE blew up at 4.02pm, 1,017 officers and men being lost, 2 saved. Her sister QUEEN MARY blew up at 4.26pm, (1,266 officers and men lost, 20 saved).

The 2 battleship forces came into contact only at 6.15pm. Admiral Jellicoe, flying his flag in IRON DUKE, gave the order to deploy into line-of-battle. The 4 armoured cruisers, scouting ahead of the Grand Fleet, were scattered. (DEFENCE was sunk, WARRIOR badly damaged, sinking later, BLACK PRINCE wounded and forced to withdraw. Only DUKE OF EDINBURGH escaped).

INVINCIBLE, flying the flag of Rear Admiral Hood, led the 3rd Battle-cruiser squadron between the 2 fleets, but was blown in two by a magazine explosion at 6.32pm. 1,026 officers and men were lost. Amongst the 6 survivors were the ship's gunnery officer, Commander Dannreuther, who saw the German shell penetrate 'Q' turret (that manned by the Royal Marines), exploding inside and blowing the armoured roof off, followed by the bigger explosion which split the ship. Also saved was a much wounded and burnt Marine Gasson, the turret range-taker.

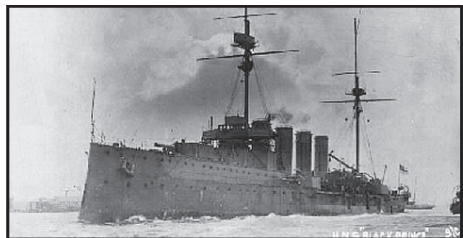
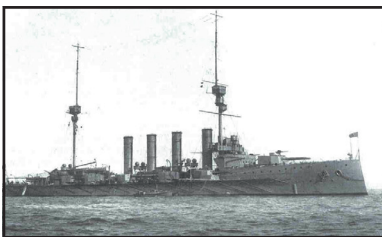


HMS Invincible

After dark, the action was largely over. Both British and German fleets headed south-east, towards Wilhelmshaven. At 10 minutes after midnight, BLACK PRINCE blundered into the German battleships, and was engaged by at least 3 of them at close range. Her aft turret was blown overboard, a fire started, and the ship blew up with 2 large explosions. All 857 officers and men were lost.

We will remember them!

The names of both men are also recorded on the Royal Naval memorial on South-sea common.



Two views of HMS Black Prince

Rowlands Castle Surgery

Surgery opening hours: 8:30 to 18:00 & alternate Saturday mornings 8:30 to 12:00.

GPs Phone-in for consultations & advice" 08:00 - 08:20 Mon – Fri - Tel 02392412309

Pharmacy opening hours: 8.30 to 18.00 & Saturday mornings 9:00 to 13:00.

(Pharmacy Closed for lunch 13:00 to 14:00)

The Surgery situated at the tip of the green has been providing the village with GP Services for decades. Our attached pharmacy opened in May 2010.

New patients welcome, pop in to reception & ask for the new patient registration form

12 The Green, Rowlands Castle, Hampshire, PO9 6BN

Tel: 023 9241 2846 Fax: 023 9241 3070 www.rowlandscastlesurgery.co.uk

WOMENS FELLOWSHIP IN ROWLANDS CASTLE

Our Womens Fellowship is held every 1st and 3rd Tuesday afternoon each month (except August) at 2pm in St John's Church Centre. Our small group is one of the longest established organisations in the village. ' Fellowship ' means sharing interests, experiences, ideas and skills so we have talks, outings, demonstrations and games included with this is a great deal of good conversation plus a welcome cuppa! We also enjoy socials, Bring and Buy Sales, meals out, quizzes, musical afternoons and debates. **We are a small friendly group so if you are interested in coming along to our meetings please contact Claire Stanley 02392412340.**

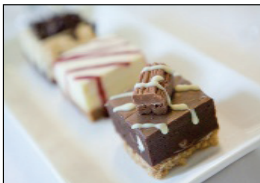
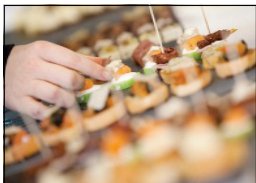


RKdia Catering Services specialise in outside catering for:

Christenings * Weddings * Funeral Receptions

Black Tie Dinners * Garden Parties * Dinner Parties

Mobile Bars * Hog Roasts * BBQs



Christmas Dinners brought to your community venue, superb value for money, a quality meal at a modest price.



Call now to make a booking as dates are limited!!



Telephone: 023 9259 5158 Email: rkdia@radian.co.uk

RKdia Catering, Knighton Corner, Portsmouth Road, Horndean, PO8 9NN

www.rkdiacatering.co.uk





SPRINGFIELD CARE HOMES



Quality nursing care tailored to your needs

Springfield Care Homes are family run residential and nursing homes, fully equipped to care for those seeking long term nursing and residential care, convalescence or respite.

We have two homes, one in Emsworth and one in Southbourne. Both of these are staffed 24 hours a day by our caring nurses and health care workers. We truly strive to create a home away from home for all our residents.

At Springfield, we believe that every day should be lived to the full.

- 24/7 experienced nursing support
- Ensuite rooms
- Large, comfortable modern lounge areas
- Dining areas looking out into the gardens
- Landscaped patio and relaxation areas
- Telephone points in all rooms
- TV and Wi-Fi available

We look forward to welcoming you...



Springfield Care Home
72 – 74 Havant Road
Emsworth
Hampshire
PO10 7LH
Tel 01243 372445



Printsted Care Home
Printsted Lane
Printsted
West Sussex
PO10 8HR
Tel 01243 372024

www.springfieldnursing.co.uk

Ashley Electricians

Dalkieth, Woodmancote Lane, Woodmancote,
West Sussex PO10 8RD

- Local reliable electrician.
- All electrical work undertaken from sockets to rewires.
- Free visual safety checks & estimates.
- Fully insured & Part 'P' registered.
- Member of Trading Standards 'Buy with Confidence' Scheme.

Contact Ed Ashley on 01243 373195 or 07733 467536

ejashley@tiscali.co.uk

www.checkatrade.com/ashleyelectricians

Checkatrade.com
Where reputation matters



Bookkeeping solutions for small business

Services include:

- Invoicing & Supplier payments
- VAT
- Payroll
- Bank reconciliation
- HMRC liaison
- Business start-up advice
- On-site or remote options

Contact us now for your free consultation

T: 023 92006466

E: alison@simplybalancedsolutions.co.uk

www.simplybalancedsolutions.co.uk



Amelia Warren
Interior Design

Wellsworth Lane
Rowlands Castle
07753 362842

Experienced interior designer providing advice on design schemes alongside made to measure curtains and blinds

Please visit my website for more information on services provided, view completed projects and client testimonials

Website: www.ameliawarreninteriordesign.co.uk

Email: ameliawarren@btinternet.com

AQUA

BATHROOMS



Bathrooms designed especially for you...

At Aqua Bathrooms, we offer a tailored design service, helping you create the perfect bathing space in your home.

From concept through to completion, our experienced and talented designers will work with you to ensure every aspect of your new bathroom meets your requirements. Our experienced installation team will ensure your bathroom is installed correctly with minimum fuss and disruption to your home.

Our friendly and knowledgeable team are highly skilled and experienced and have built up a strong reputation for quality and reliability. All our work is fully guaranteed so rest assured that entrusting your bathroom design and installation to Aqua, you will be in good hands.

We look forward to welcoming you from
Simon, Dave and the Aqua Team

-  Fully fitted showroom
-  Free design service
-  Detailed quotation
-  In house fitters
-  Fully guaranteed
-  Peace of mind



Visit our Showroom
18 Elm Grove,
Hayling Island,
Hampshire
PO11 9EF

T: 02392 466007

E: enquiries@aqua-ltd.co.uk

W: www.aqua-ltd.co.uk

Proud members of
Checkatrade.com
Where reputation matters

Print. Perfected

As the South's largest commercial printer,
we handle all your print needs:

Programmes • Brochures • Folders • Catalogues
Stationery • Flyers and much much more...



DELIVERIES ON TIME EVERY TIME.
QUALITY GUARANTEED.



Follow us on Twitter for up to the minute news,
print tips and last minute offers.

Large enough to cope, small enough to care

T: 023 9233 4900
enquiries@bishops.co.uk
www.bishops.co.uk



Print. Perfected



Charlesworth
Outside

Inspiring gardens....
from concept to completion

Bespoke Designed Gardens • Planting



Extending your home into your garden

FREE CONSULTATION AND QUOTATION

Tel: 02392 413865 Mobile: 07767 867603

office@charlesworthoutside.co.uk www.charlesworthoutside.co.uk



HEATING • PLUMBING • BATHROOMS

I can help with all your boiler, heating, plumbing and bathroom needs.
And I live right here in the village, so can call round at short notice.

**Here's my number.
Please keep it in a
safe place.**

07905 908143



City &
Guilds
Qualified





DITCHAM PARK SCHOOL

Where every child is known and valued

A co-educational, independent day school for children aged 4-16 years



Small classes & individual attention
Excellent academic results

For further information please
contact the school office

01730 825659

Ditcham Park, Nr Petersfield
Hampshire GU31 5RN

info@ditchampark.com

www.ditchampark.com

fabulous flooring with a perfect fit!

visit our website
to find out more
waterloovillecarpets.co.uk

Service is the secret of satisfied customers and satisfied customers are the secret of our 47 year success.

- Fabulous Carpets from Greendale, Brintons and Ulster
- Crucial Trading/Alternative Flooring Specialist
- Fabulous Vinyl Tiles from Amtico, Karndean, Victoria & Vusta
- New Click only Vinyl Planks from Victoria
- Fabulous Quickstep Laminate Flooring
- Oak Floors – Engineered Planks and Solid Click
- Fabulous Bamboo, Cork and Sustainable Flooring
- 12 MONTHS INTEREST FREE CREDIT on all products



We promise you a flooring that fits your requirements, fits your budget and fits beautifully into your home. Please call in, anytime.

A pleasure to come home to.....

31 The Square, Petersfield, Hampshire Telephone: 01730 262223/267381 Fax: 01730 267394
email: sales@waterloovillecarpets.co.uk waterloovillecarpets.co.uk

Handyman

Home Maintenance

General Maintenance

Carpentry

Door hanging

Repairs

Decorating

Fencing

Jet washing

Decking

Water Features

Cabinet making

For all the jobs you can't or don't want to do

Call Alan on 07580 067190 or 02392 412797

for a free no obligation quote

Email alan@handyman66.com

Open Morning at Portsmouth High School

Saturday 4 October 9.30 to 12.30

www.portsmouthhigh.co.uk

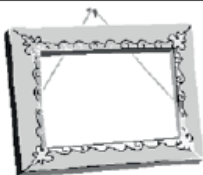


**Portsmouth
High School**

An independent school for girls from
Nursery to Sixth Form educating girls
for the challenges of the 21st Century

023 9282 6714
admissions@por.gdst.net
Part of the GDST network of schools

Specialists in educating girls



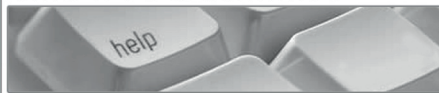
Petersfield Framing Studios

Picture Framing by Andy Parks, MA, G.C.F.

- ◆ Collection and Delivery Service in the Rowlands Castle area.
- ◆ Guild Commended Framer (G.C.F.) with 23 years experience.
- ◆ Over 400 different mouldings and 200 mount boards to choose from.
- ◆ Very competitive prices.
- ◆ Picture framing tuition also available.
- ◆ Tel: 01730 269926.
- ◆ Visit: www.petersfieldframing.co.uk

"We Collect and Deliver Your Picture Framing"

microsomma



IT Support for Home & Small Business

www.microsomma.com

Please see my website for local recommendations...

Reliable & Local

Available 7 Days

Qualified & Experienced

0845 0170772

07796 346526

david@microsomma.com



Where play and learning fit together

Registration Charity Number 1088132
Rowlands Castle St Johns CEC Primary School
Whichers Gate Road, Rowlands Castle,
Hampshire PO9 6BB

For children aged 2-5 years

OPENING TIMES: Monday to Fridays 8.30am ~ 4.30pm

Ofsted inspected

Early Years Foundation Stage curriculum

For a prospectus, or to arrange an informal chat, please drop in or contact:

LORRAINE BRYANT ~ Manager on 023 9241 2095

St. Johns CEC Primary School



QUALITY PLAYSCHOOL WITH AFFORDABLE FEES

34

ELIZABETH TURNER
PROFESSIONAL
CURTAIN MAKER

CURTAINS, BLINDS OF ALL TYPES, PELMETS
AND VALANCES, CUSHIONS ETC.
TRACKS, POLES AND
FITTING SERVICE
FABRICS, TRIMMINGS
FOR FREE ESTIMATE WITH EFFICIENT AND
FRIENDLY SERVICE

TELEPHONE / FAX 01243 389939

**PROFESSIONAL PLUMBING
& HEATING SPECIALISTS**

A. A. BARRETT

51 Hatchmore Road
Denmead
Waterlooville
PO7 6TE

Tel: 023 92258057
Mobile: 07802321269

LANGUAGE TUITION —

exams, tourism or conversational:
GERMAN to GCSE, A-Level and degree standards

FRENCH to GCSE standard
Also **EFL, EAL** and **ESL**

Fully-qualified, locally-based teacher; friendly
and approachable; reasonably-priced lessons at
times and venue to suit you.

Enquire, without obligation, to:

Vera Schymonski

023 9241 3843

07826 186279

v.schymonski@gmx.de



R&J PLASTERING

- free estimates
- 25yrs experience
- plastering
- insurance repairs
- floor screeding
- rendering
- coving
- pebble dashing
- general building work

4 Bowes Hill, Rowlands Castle,
Hampshire. PO9 6BP

07958-285409 02392 413285

R.jmplastering@hotmail.com

Gentle Touch cst

Louise Toone BCST RCST

*Have you thought about trying
Craniosacral Therapy?*

It's a safe and gentle clinical treatment for
all ages. As a holistic therapy it can help
physical difficulties as well as emotional
symptoms such as stress & insomnia

Treatments for Mothers and Babies

Convenient appointment times in
Rowlands Castle. For more information
call Louise on 02392 413278

www.gentletouchcst.com

S.Roberts Upholsterers

Professional Upholstery

Contract & Domestic Any size of work undertaken

We provide a free measuring
and quotation service.

Find us on CheckATrade.com

Call on 01243 377200 for all your
Upholstery requirements.

email: srulimited@hotmail.com
www.re-upholster.co.uk



Proud members of
Checkatrade.com
Where reputation matters



S Roberts Upholsterers Ltd
Unit 10, Palmers Road
Industrial Estate
Emsworth
PO10 7DL



Burchett Decorators

- Domestic, Commercial & Insurance Work
- 22 Years Experience
- All Types of Decorating including
Wallpapering, Coving & Carpentry
- Fully Insured
- Clean, Tidy & Friendly Service

Ring for FREE Estimate
or Just Helpful Advice

07866 691 984
023 9241 3548

Email: Burchett.davis@btinternet.com

“Keith was friendly,
reliable and worked
exactly as he promised
to, neat, tidy and very
personable”

Customer, Stedham, 2012

Checkatrade.com
Where reputation matters



Member for 8 years

Burchett Decorators, Finchdean, Nr. Rowlands Castle, Hampshire



BUILDING CONTRACTORS

COMMERCIAL, INDUSTRIAL and
MAJOR DOMESTIC WORKS

Joinery Mill, The Green, Rowlands Castle,
Hampshire. PO9 6BW

Tel 023 9241 2741
www.winnicott.co.uk

Established
1904

Fax 023 9241 2212
mail@winnicott.co.uk



The advertisement graphic for Rowlands Home Hardware is enclosed in a blue border. It features several images: a red lawnmower, a bird feeder with two birds, a can of HG paint, a white toaster, a set of knives, a pair of pliers, and a silver kettle. A yellow paint roller is also shown. The text "homehardware" is in a blue banner, and "Not just paint! WE COVER EVERYTHING!" is in a yellow banner. Below this, three checkmarks list: "GREAT SAVINGS ON MANY RANGES", "FRIENDLY EXPERIENCED STAFF", and "OPEN SUNDAYS". The Dulux logo with "PAINT MIXING CENTRES" is also present. At the bottom, a red banner says "POST OFFICE" and "OPEN 7 DAYS A WEEK".

homehardware
Not just paint!
WE COVER EVERYTHING!

- ✓ GREAT SAVINGS ON MANY RANGES
- ✓ FRIENDLY EXPERIENCED STAFF
- ✓ **OPEN SUNDAYS**

Dulux
PAINT MIXING CENTRES

Austens
Petworth
Tel: 01798 342104
Billingshurst
Tel: 01403 782963
Midhurst
Tel: 01730 815979

Alton
Tel: 01420 85115
Emsworth
Tel: 01243 376852
Romsey
Tel: 01794 512141
Rowlands Castle
Tel: 02392 412332

www.rowlandshomehardware.co.uk

POST OFFICE **OPEN 7 DAYS A WEEK**

CHILDRENS LEARNING CENTRE

RATED OUTSTANDING BY OFSTED 2011

Member of; 4Children

125 New Brighton Road, Emsworth

EDUCATIONAL NURSERY AND DAY CARE SERVICES

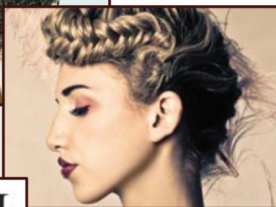
OPEN 50 WEEKS A YEAR 8.00AM - 6.00PM

We offer full time and term time care for children from 0 – 5 years, hours and days to suit your requirements. Also we provide holiday activities for children 3 – 5, and an after school club

Telephone: 01243 372015 or email: childrenslc@btconnect.com



JOICO



TIGI



02392 412 606



info@stylestudio-rowlandscastle.co.uk

Your local Hair and Beauty Salon

Recommended by The Good Salon Guide, we're situated in the heart of Rowlands Castle.

Offering a professional portfolio of hair and beauty treatments by a team of experienced hairdressers and beauticians.

- Hair for ladies and gents
- Beauty
- Special packages
- Late appointments available by request

Contact us: 3 Links Lane, Rowlands Castle, Hampshire, PO9 6AD

Find us online: stylestudio-rowlandscastle.co.uk



Legal Advice You Can Trust

George Ide LLP Solicitors has a well established and highly regarded private client department which deals with all aspects of Wills, Probate, Trusts, Court of Protection and Powers of Attorney.

We can advise you on:

- The preparation of a Will
- Obtaining Probate
- Executor Responsibilities
- Investment Advice
- Post Death Variations
- Inheritance Tax Planning
- Trusts
- Lasting Powers of Attorney
- Court of Protection Issues

The breadth and depth of the expertise of our team is such that we offer private individuals and families a tailor made personal service of the highest quality.

We provide specialist advice to manage the personal affairs of individuals at every stage of their life. Our experienced Solicitors have a sound understanding of the issues, which can affect your personal wealth and family relationships and will take all of the necessary steps to protect your interests every step of the way.

Contact Ian Oliver on: 01243 812421
ian.oliver@georgeide.co.uk
www.georgeide.co.uk

On your side

Richard C Arnold

Optometrists & Contact Lens Practitioners

Est 1890

Quality Eye Care & Stunning Eye Wear For Every Family Member

R

RODENSTOCK



Why not join the
eyeplan™ care scheme?

Fixed **monthly payments**

FREE eye tests and **savings** on eye
wear and many **other benefits**

**Ask in practice or see website for
further details...**

For the best in **Modern Technology,**
Traditional Service & Top Fashions,
book your eye test today...

because eye care matters

The latest in Eye Care Technology

OCT and Optomap eye
tests can help safeguard
your eyesight like
never before

High Street, **Petersfield: 01730 263302**
Red Lion Street, **Midhurst: 01730 814035**
London Road, **Cowplain: 02392 250641**
www.rcarnold.co.uk

Open: 9am to 5:30pm Weekdays, 9am to 5pm Saturdays

Martin Steels Ltd

Optometrist & Contact Lens Practitioner

The LATEST in Eyewear Technology & Style

OCT technology for sight protection



With a quick and simple OCT test we can examine the internal structure of your eye and can detect problems before they start affecting or damaging your eyesight

In many cases, the earlier the treatment the less likelihood of permanent eyesight impairment

Ask about OCT when you book your next eye test

High quality & high fashion frames

We always stock a wide selection of the latest fashions and innovations
Whatever your look, you'll find a match at Martin Steels

RADLEY
LONDON

Silhouette

AUSTIN REED

Chloé

PORSCHE DESIGN

R
RODENSTOCK

MICHAEL KORS

Maui Jim

ck
Calvin Klein

LACOSTE

22IKILL



Saturdays: 9am - 1:00pm
Weekdays: 9am - 5:30pm

4, The Old Flour Mill,
Queen Street, Emsworth

martinsteels.com
01243 375141